

FORT LEWIS, WASHINGTON

RNAV (GPS) RWY 33

APCH CRS 331°
 Rwy Idg 6124
 TDZE 301
 Arpt Elev 301

AL-413 (USA)

GRAY AAF (KGRF)

* Circling not authorized W of Rwy 15-33.

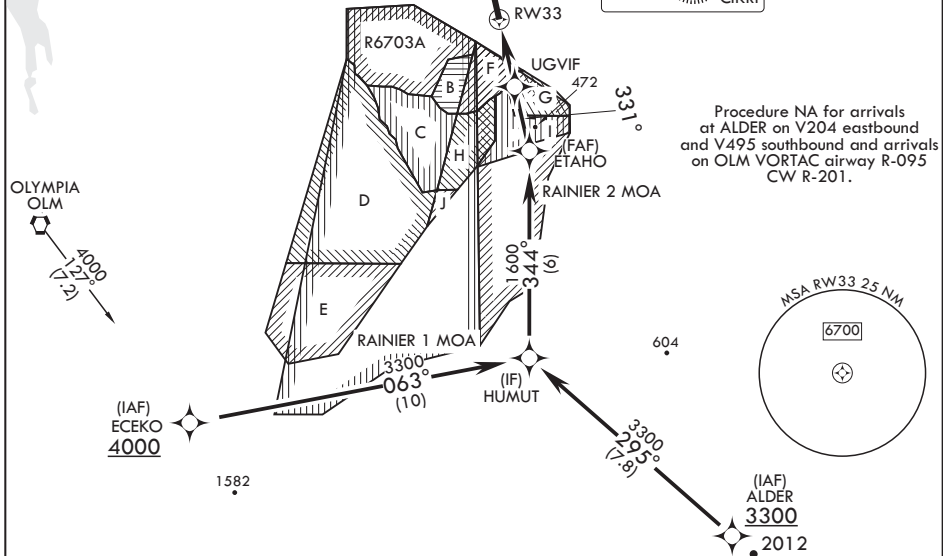
SSALR MISSED APPROACH: Climb to 2000 direct CIKRI and hold.

ATIS 124.65 306.2	SEATTLE APP CON/DEP CON 120.1 290.9	TOWER* 119.325 (CTAF) 256.8	GND CON 121.9 290.2	CLNC DEL 121.9 290.2	PAR
----------------------	--	--------------------------------	------------------------	-------------------------	-----

RNP APCH

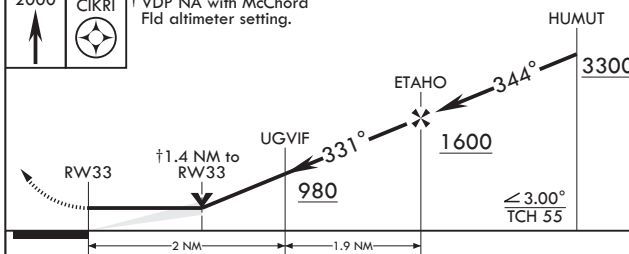
When local altimeter setting not received, use McChord Fld altimeter setting.

MISSED APPROACH



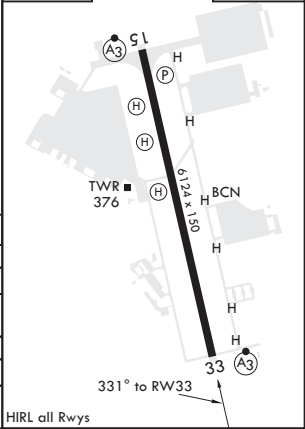
Procedure NA for arrivals at ALDER on V204 eastbound and V495 southbound and arrivals on OLM VORTAC airway R-095 CW R-201.

2000 CIKRI † VDP NA with McChord Fld altimeter setting.



CATEGORY	A	B	C	D
LNAV MDA	800-1/2 499 (500-1/2)	800-1 499 (500-1)	840-1 1/2 539 (600-1 1/2)	920-2 619 (700-2)
C CIRCLING*	840-1 539 (600-1)	539 (600-1 1/2)	860-1 519 (600-1)	940-2 639 (700-2)
MC CHORD FLD ALTIMETER SETTING MINIMUMS				
LNAV MDA	820-1/2 519 (600-1/2)	820-1 519 (600-1)	860-1 1/2 559 (600-1 1/2)	940-2 639 (700-2)
C CIRCLING*	860-1 559 (600-1)	559 (600-1 1/2)	860-1 1/2 559 (600-1 1/2)	940-2 639 (700-2)

ELEV 301 TDZE 301



FORT LEWIS, WASHINGTON

47°05'N - 122°35'W

GRAY AAF (KGRF)

Amdt 2 10OCT19

RNAV (GPS) RWY 33

NW-1, 10 SEP 2020 to 08 OCT 2020

NW-1, 10 SEP 2020 to 08 OCT 2020