

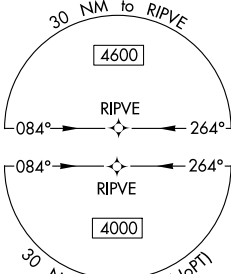
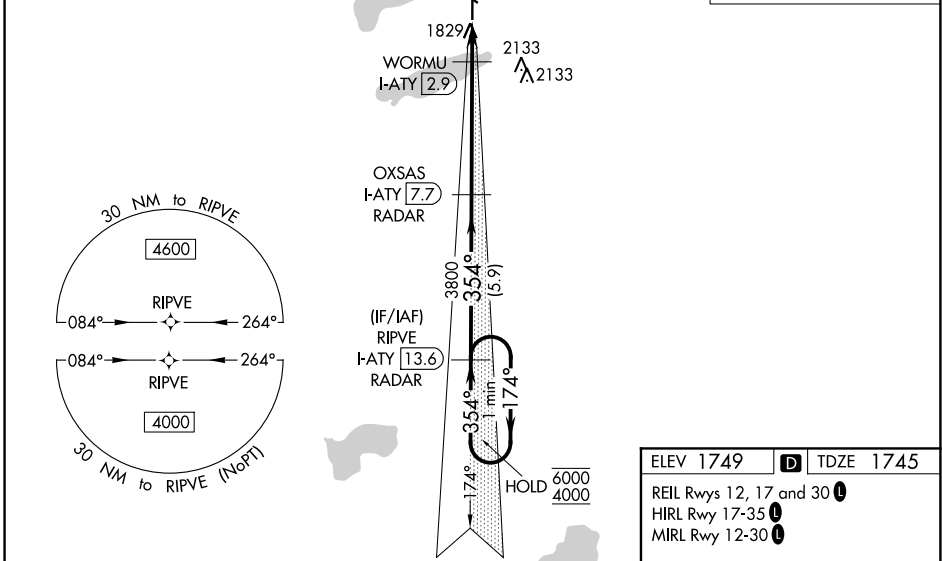
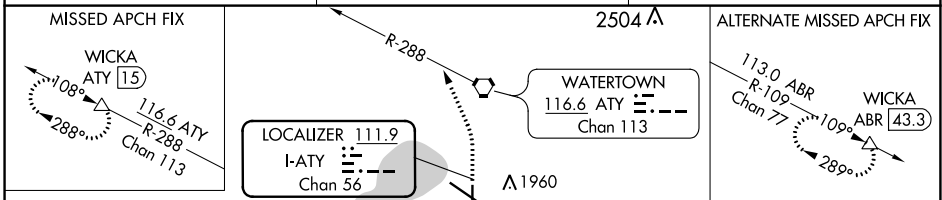
LOC/DME I-ATY <b>111.9</b> Chan <b>56</b>	APP CRS <b>354°</b>	Rwy Idg <b>6893</b> TDZE <b>1745</b> Apt Elev <b>1749</b>
---	------------------------	---

# ILS or LOC RWY 35

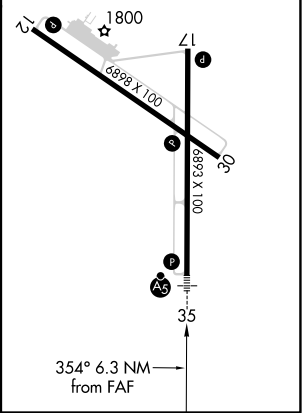
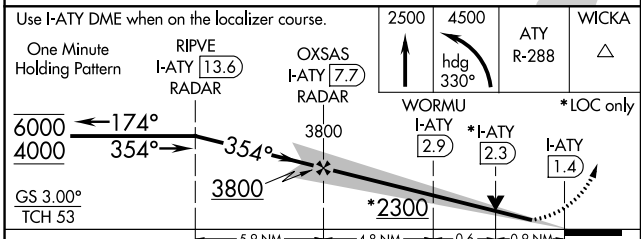
WATERTOWN RGNL (ATY)

RNAV 1-GPS or RADAR required for procedure entry. DME required.	MALSR AS	MISSED APPROACH: Climb to 2500 then climbing left turn to 4500 on heading 330° and ATY R-288 to WICKA/ATY 1.5 DME and hold.
---	-------------	---

ASOS <b>126.625</b>	MINNEAPOLIS CENTER <b>128.5 306.2</b>	UNICOM <b>123.05 (CTAF) 0</b>
------------------------	--	----------------------------------



ELEV 1749	TDZE 1745
REIL Rwy 12, 17 and 30	HIRL Rwy 17-35
MIRL Rwy 12-30	



CATEGORY	A	B	C	D
S-ILS 35	1945-½		200 (200-½)	
S-LOC 35	2080-½		335 (400-½)	
CIRCLING	2260-1	511 (600-1)	2500-2¼ 751 (800-2¼)	2500-2½ 751 (800-2½)

NC-1, 10 SEP 2020 to 08 OCT 2020

NC-1, 10 SEP 2020 to 08 OCT 2020