

WAAS CH 82305 W17A	APP CRS 174°	Rwy Idg TDZE Apt Elev	6893 1740 1749
--	------------------------	-----------------------------	---

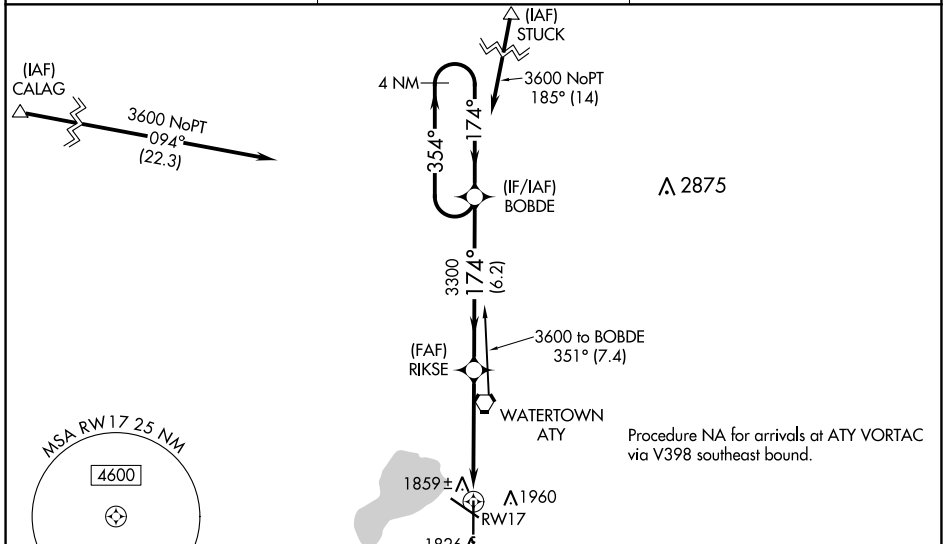
RNAV (GPS) RWY 17

WATERTOWN RGNL (ATY)

⚠ Baro-VNAV NA when using Brookings altimeter setting. DME/DME RNP-0.3 NA.
⚠ For uncompensated Baro-VNAV systems, LNAV/VNAV NA below -18°C (0°F) or above 45°C (113°F). VDP NA when using Brookings altimeter setting. When local altimeter setting not received, use Brookings altimeter setting and increase all DAs 105 feet and all MDAs 120 feet; increase Circling Cat C and D visibility ¼ SM.

MISSED APPROACH: Climb to 4000 direct APEDE and via 154° track to VESTY and hold.

ASOS 126.625	MINNEAPOLIS CENTER 128.5 306.2	UNICOM 123.05 (CTAF) 📻
------------------------	--	---

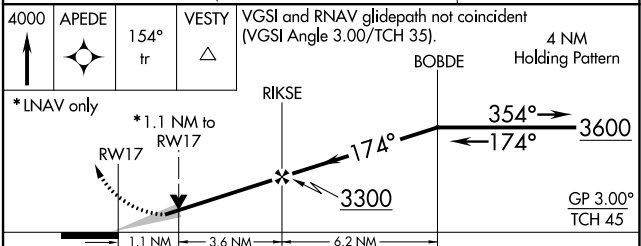
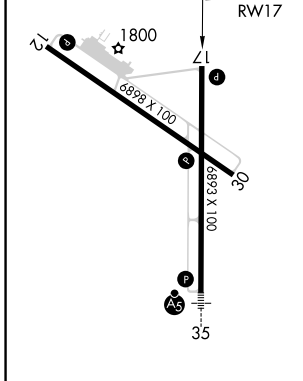


NC-1, 10 SEP 2020 to 08 OCT 2020

NC-1, 10 SEP 2020 to 08 OCT 2020



ELEV 1749	D	TDZE 1740
-----------	----------	-----------



CATEGORY	A	B	C	D
LPV DA	2054-1		314 (400-1)	
LNAV/VNAV DA	2129-1¼		389 (400-1¼)	
LNAV MDA	2120-1 380 (400-1)		2120-1¼ 380 (400-1¼)	
C CIRCLING	2260-1 511 (600-1)		2500-2¼ 751 (800-2¼)	

REIL Rwy 12, 17 and 30 **📻**
 HIRL Rwy 17-35 **📻**
 MIRL Rwy 12-30 **📻**

WATERTOWN, SOUTH DAKOTA
 Orig-A 23APR20

44°55'N-97°09'W

WATERTOWN RGNL (ATY)

RNAV (GPS) RWY 17