


LOC/DME I-LSW 109.5 Chan 32	APP CRS 233°	Rwy Idg 23R 23L 5596 7543 TDZE 712 710 Apt Elev 716 716
-------------------------------------------------	------------------------	------------------------------------------------------------------------------------------------

ILS or LOC RWY 23L

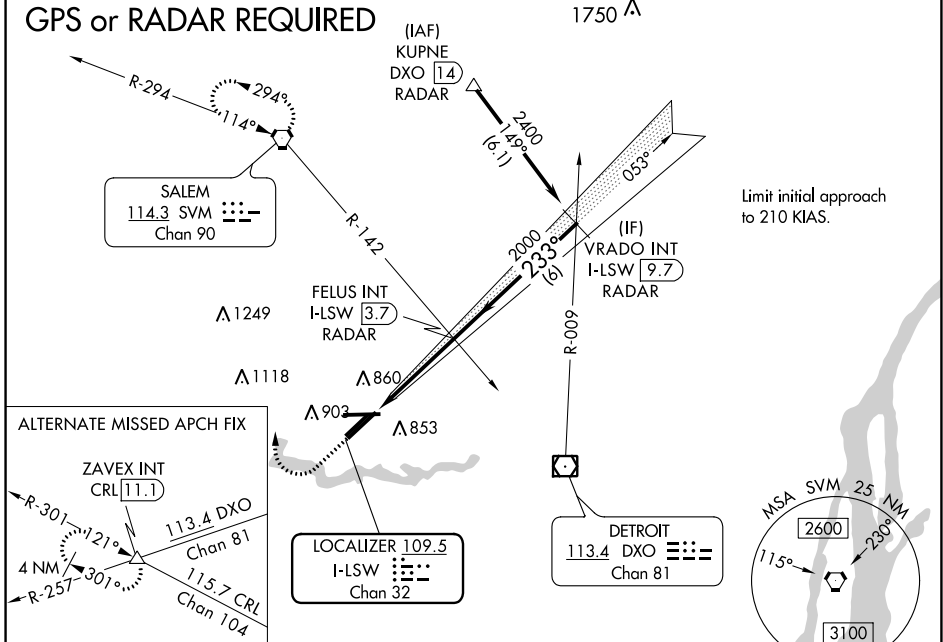
WILLOW RUN (YIP)

⚠ Inoperative table does not apply to S-ILS 23L.
⚠ For inoperative MALSR, increase S-LOC 23L Cat A/B visibility to 1 mile.
 Helicopter visibility reduction below 3/4 SM NA.

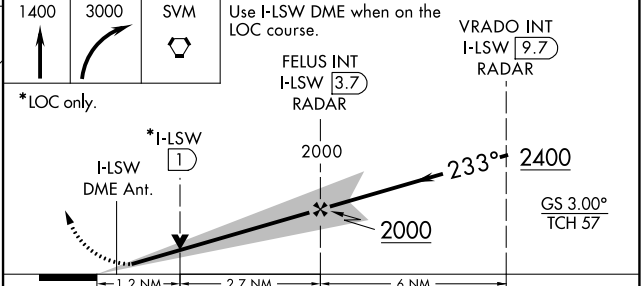
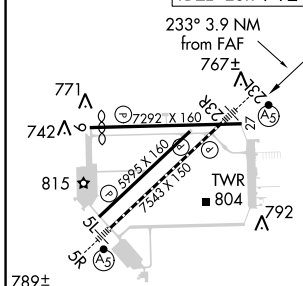
MALSR  MISSED APPROACH: Climb to 1400 then dimbing right turn to 3000 direct SVM VORTAC and hold.

ATIS 127.425	DETROIT APP CON 118.95 284.0	WILLOW RUN TOWER 125.275 256.9	GND CON 119.975
------------------------	----------------------------------------	------------------------------------------	---------------------------

GPS or RADAR REQUIRED



ELEV 716	D TDZE 23L 710 TDZE 23R 712
----------	---------------------------------------



TDZ/CL Rwy 5R	771	742	815	792		
HIRL Rwy 5R-23L	771	742	815	792		
MIRL Rwys 5L-23R, and 9-27	771	742	815	792		
FAF to MAP 3.9 NM	771	742	815	792		
Knots	60	90	120	150	180	
Min:Sec	3:54	2:36	1:57	1:34	1:18	
C CIRCLING	1220-1	504 (600-1)	1140-1½	428 (500-1)	1140-2	428 (500-2)
	1220-1	504 (600-1)	1220-1½	504 (600-1½)	1400-2¼	684 (700-2¼)

WILLOW RUN (YIP)

ILS or LOC RWY 23L

EC-1, 10 SEP 2020 to 08 OCT 2020

EC-1, 10 SEP 2020 to 08 OCT 2020