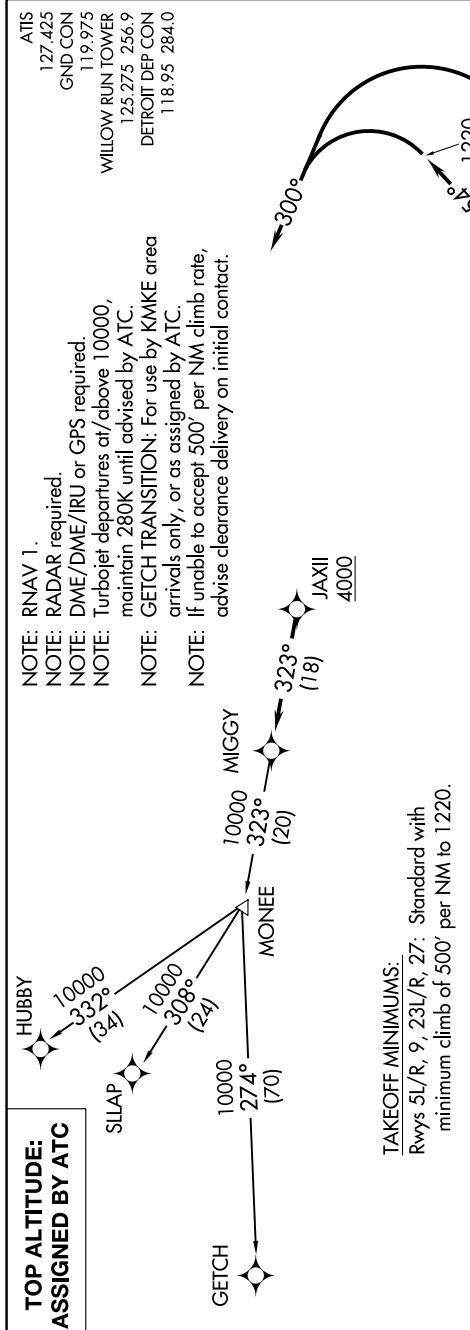
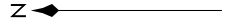
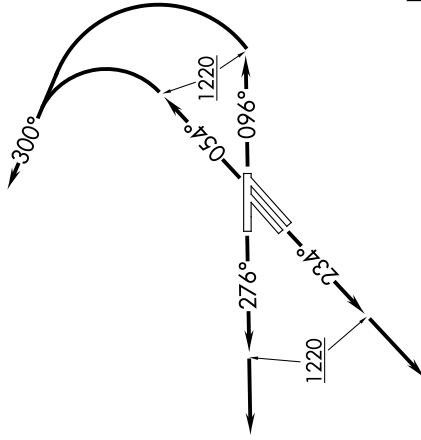


EC-1, 10 SEP 2020 to 08 OCT 2020



- NOTE: RNAV 1.
- NOTE: RADAR required.
- NOTE: DME/DME/IRU or GPS required.
- NOTE: Turbojet departures at/above 10000, maintain 280K until advised by ATC.
- NOTE: GETCH TRANSITION: For use by KMIKE area arrivals only, or as assigned by ATC.
- NOTE: If unable to accept 500' per NM climb rate, advise clearance delivery on initial contact.

ATIS  
127.425  
GND CON  
119.975  
WILLOW RUN TOWER  
125.275 256.9  
DETROIT DEP CON  
118.95 284.0



NOTE: Chart not to scale.

**DEPARTURE ROUTE DESCRIPTION**

**TAKEOFF RUNWAYS 5L/R:** Climb on heading 054° to 1220, then left turn heading 300° for RADAR vectors to cross JAXII at or above 4000, thence...  
**TAKEOFF RUNWAY 9:** Climb on heading 096° to 1220, then left turn heading 300° for RADAR vectors to cross JAXII at or above 4000, thence...  
**TAKEOFF RUNWAYS 23L/R:** Climb on heading 234° to 1220, then on heading 234° for RADAR vectors to cross JAXII at or above 4000, thence...  
**TAKEOFF RUNWAY 27:** Climb on heading 276° to 1220, then on heading 276° for RADAR vectors to cross JAXII at or above 4000, thence...

...on track 323° to MIGGY, then on (transition). Maintain ATC assigned altitude, expect filed altitude 10 minutes after departure.

- GETCH TRANSITION (MIGGY2.GETCH):**
- HUBBY TRANSITION (MIGGY2.HUBBY):**
- SILAP TRANSITION (MIGGY2.SILAP):**

EC-1, 10 SEP 2020 to 08 OCT 2020