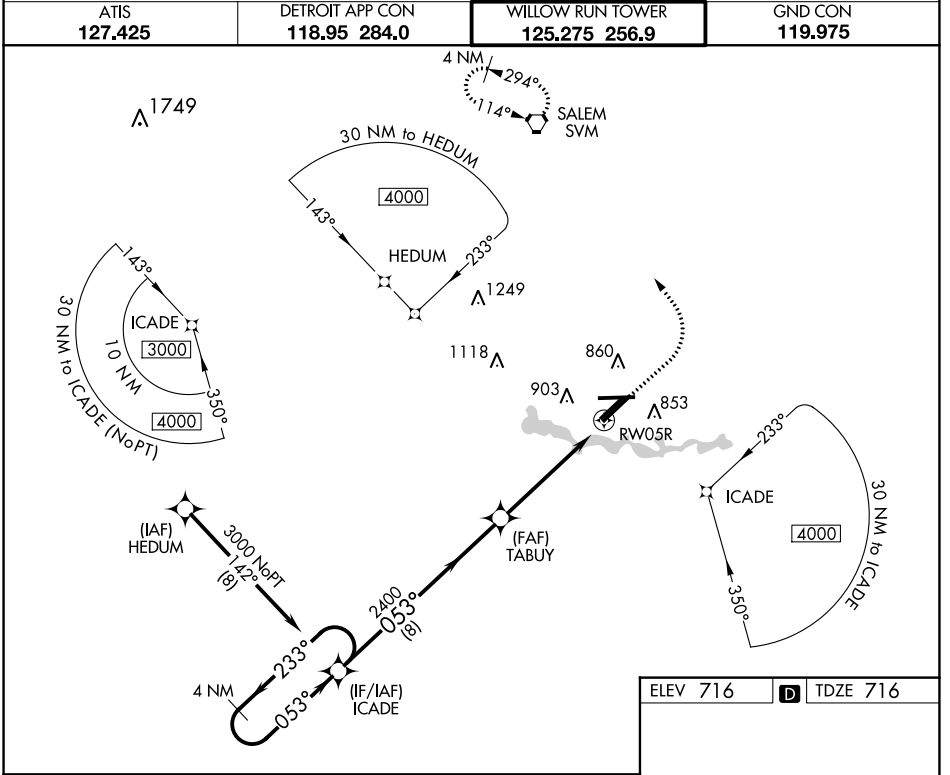


WAAS CH 97718 W05A	APP CRS 053°	Rwy Idg TDZE Apt Elev	7543 716 716
--	------------------------	-----------------------------	---

RNAV (GPS) RWY 5R

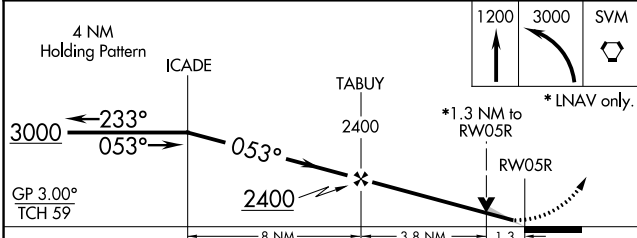
WILLOW RUN (YIP)

<p>⚠ Circling to Rwy 9 NA at night. For uncompensated Baro-VNAV systems, LNAV/VNAV NA below -18°C (0°F) or above 54°C (130°F). DME/DME RNP-0.3 NA. For inop ALS, increase LNAV Cat C/D visibility to 1½ SM.</p>	<p>MALSR</p>	<p>MISSED APPROACH: Climb to 1200 then climbing left turn to 3000 direct SVM VORTAC and hold.</p>
	<p>ATIS 127.425 DETROIT APP CON 118.95 284.0 WILLOW RUN TOWER 125.275 256.9 GND CON 119.975</p>	



EC-1, 10 SEP 2020 to 08 OCT 2020

EC-1, 10 SEP 2020 to 08 OCT 2020



ELEV 716	D TDZE 716
----------	-------------------

The detailed diagram of RWY 5R shows the runway, taxiway, and surrounding terrain. It includes altitudes (771, 742, 815, 789, 767, 804) and distances (7292 X 160, 5995 X 116, 7543 X 150). The chart also shows the location of the tower (TWR 804) and the runway (RWY 5R).

CATEGORY	A	B	C	D
LPV DA	916/18 200 (200-½)			
LNAV/VNAV DA	1055/30 339 (400-⅝)			
LNAV MDA	1200/24	484 (500-½)	1200/50	484 (500-1)
C CIRCLING	1220-1	504 (600-1)	1220-1½ 504 (600-1½)	1400-2¼ 684 (700-2¼)

TDZ/CL Rwy 5R
HIRL Rwy 5R-23L
MIRL Rwy 5L-23R, and 9-27