

APP CRS	Rwy Idg	5411
026°	TDZE	996
	Apt Elev	998

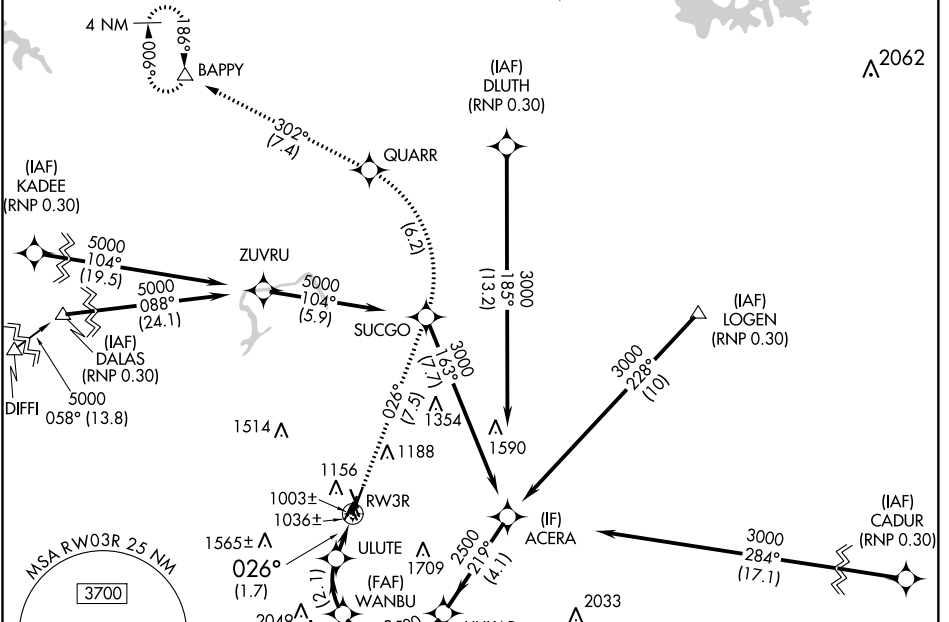
RNAV (RNP) RWY 3R

DEKALB-PEACHTREE (PDK)

▼ For uncompensated Baro-VNAV systems, procedure NA below 1°C (33°F) or above 45°C (114°F). RF required. GPS required.

MISSED APPROACH: Climb to 4000 on track 026° to SUCGO then left turn to QUARR then on track 302° to BAPPY and hold.

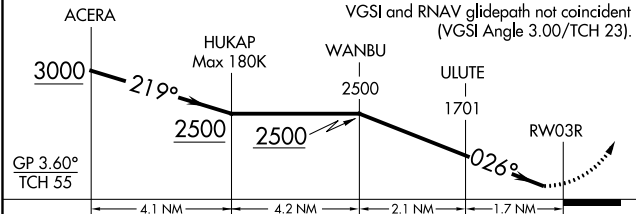
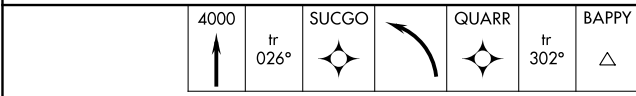
ATIS	ATLANTA APP CON	PEACHTREE TOWER★	GND CON	CLNC DEL	CLNC DEL	UNICOM	120.0
128.4	126,975 239,275	120.9(CTAF) 281.5	121.6	125.2	(When twr closed)	122.95	



SE-4, 10 SEP 2020 to 08 OCT 2020

SE-4, 10 SEP 2020 to 08 OCT 2020

ELEV	998	TDZE	996
------	-----	------	-----



CATEGORY	A	B	C	D
RNP 0.10 DA	1334-1	338 (400-1)		NA
RNP 0.30 DA	1441-1 3/8	445 (500-1 3/8)		NA

AUTHORIZATION REQUIRED

