


APP CRS	Rwy Idg	4996
221°	TDZE	991
	Apt Elev	998

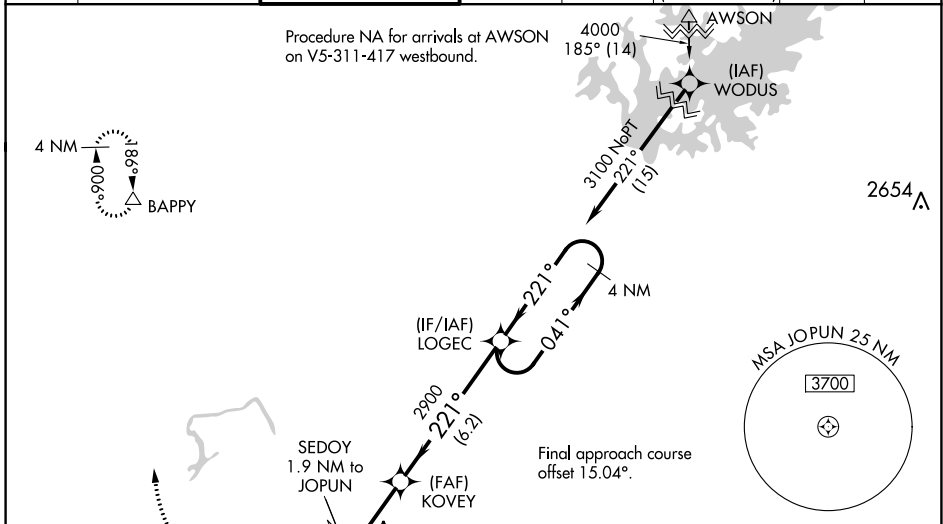
RNAV (GPS) Y RWY 21L

DEKALB-PEACHTREE (PDK)

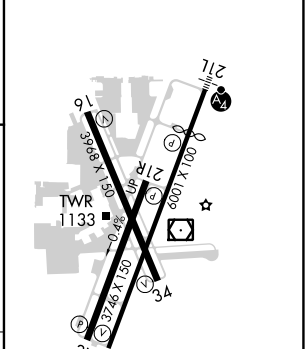
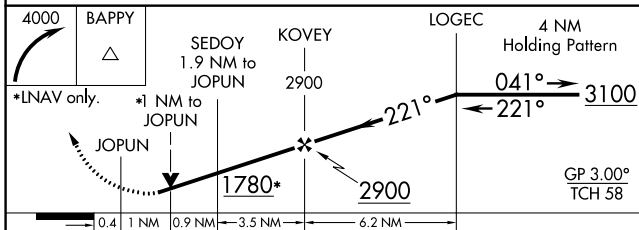
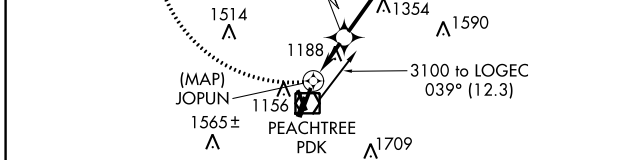
⚠ Night landing: Rwy 3L, 16 NA. Baro-VNAV NA when using Fulton County Airport-Brown Field altimeter setting. For uncompensated Baro-VNAV systems, LNAV/VNAV NA below 1°C (34°F) or above 54°C (130°F). DME/DME RNP-0.3 NA. Helicopter visibility reduction below 3/4 SM NA. For inop MALSF, increase LNAV/VNAV all Cats visibility to 1 1/2 mile and LNAV Cats C/D visibility to 1 3/8 mile. When local altimeter not received, use Fulton County Airport-Brown Field altimeter setting and increase LNAV/VNAV all Cats DA to 1505 and all MDA 60 feet; increase LNAV/VNAV all Cats visibility 1/2 mile, LNAV Cats C/D visibility 1/8 mile and Circling Cat C visibility 1/4 mile. VDP NA when using Fulton County Airport-Brown Field altimeter setting. For inop MALSF when using Fulton County Airport-Brown Field altimeter setting, increase LNAV/VNAV Cat D visibility to 2 miles and LNAV Cat D visibility to 1 1/8 mile.

MALSF  MISSED APPROACH: Climbing right turn to 4000 direct BAPPY and hold.

ATIS	ATLANTA APP CON	PEACHTREE TOWER*	GND CON	CLNC DEL	CLNC DEL	UNICOM	120.0
128.4	126.975 239.275	120.9 (CTAF) 281.5	121.6	125.2	120.9 (When twr closed)	122.95	



ELEV 998	D TDZE 991
----------	-------------------



CATEGORY	A	B	C	D
LNAV/VNAV DA	1461-1 1/4 470 (500-1 1/4)			
LNAV MDA	1500-3/4 509 (600-3/4)	1500-1 1/4 509 (600-1 1/4)		
CIRCLING	1580-1 582 (600-1)	1840-2 1/2 842 (900-2 1/2)	2060-3 1062 (1100-3)	

HIRL Rwy 3R-21L **Ⓛ**
MIRL Rwy 16-34 and 3L-21R
REIL Rwy 3R and 34

SE-4, 10 SEP 2020 to 08 OCT 2020

SE-4, 10 SEP 2020 to 08 OCT 2020