

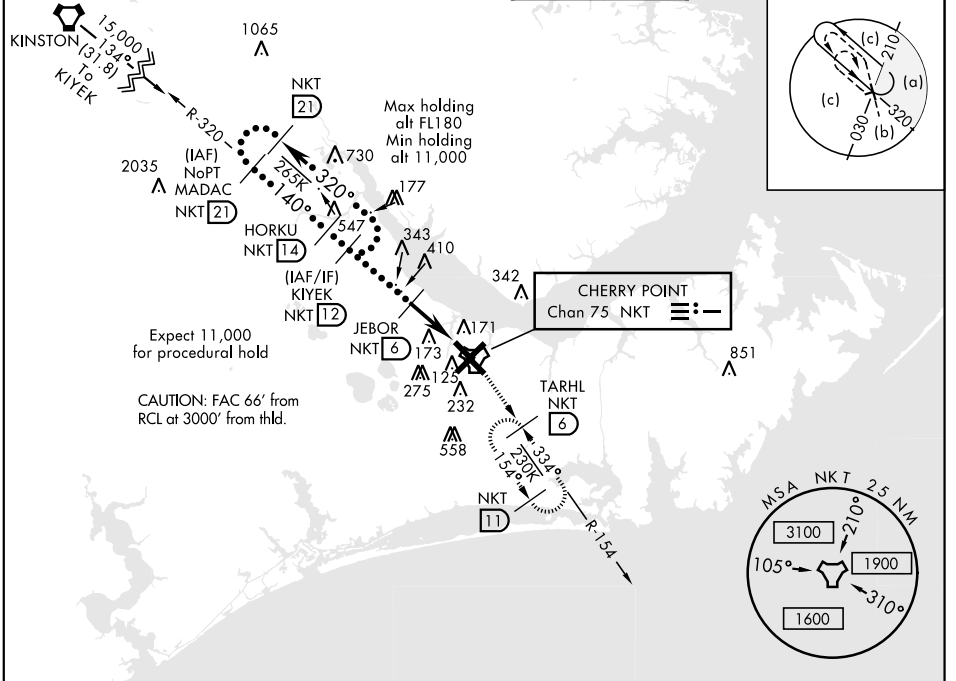
CHERRY POINT, NORTH CAROLINA

HI-TACAN RWY 14L

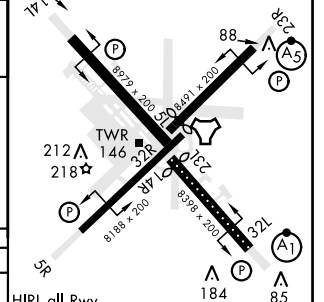
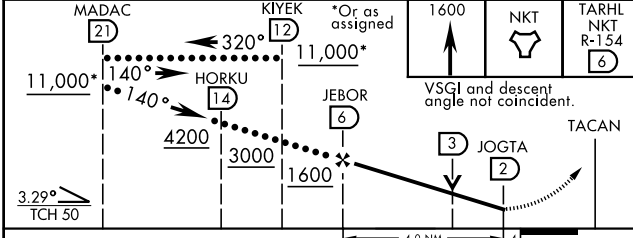
TACAN NKT Chan 75	APCH CRS 140°	Rwy Idg TDZE Arprt Elev 8979 26 29	JAL-471 [USN] CHERRY POINT MCAS (CUNNINGHAM FLD) (KNKT)
-----------------------------	-------------------------	--	---

MISSED APPROACH: Climb to 1600 to NKT TACAN then intercept NKT R-154 to TARHL and hold.

ATIS 127.475 244.875	CHERRY POINT APP CON (E) 119.75 360.775 (abv 2600') (E) 132.575 299.6 (at/blw 2600') (W) 119.35 377.175 (N) 124.1 268.7	CHERRY POINT TOWER 121.3 340.2	GND CON 128.625 239.025	CLNC DEL 125.95 316.125	ASR/ PAR
--	--	--	---	---	-------------



ELEV 29	TDZE 26
140° to TACAN	Rwy 32R, 23L, 14R, 5L marked in center mat area.



CATEGORY	C	D	E
S-14L	500-1 $\frac{3}{8}$	474	(500-1 $\frac{3}{8}$)
CIRCLING	600-1 $\frac{1}{2}$ 571 (600-1 $\frac{1}{2}$)	600-2 571 (600-2)	700-2 $\frac{1}{2}$ 671 (700-2 $\frac{1}{2}$)

HIRL all Rwy
REIL Rwy 5L and 14R
Rwy 5L-23R Idg 7552',
14R-32L Idg 7551'

CHERRY POINT, NORTH CAROLINA 34° 54' N-76° 53' W CHERRY POINT MCAS (CUNNINGHAM FLD) (KNKT)

HI-TACAN RWY 14L

SE-2, 10 SEP 2020 to 08 OCT 2020

SE-2, 10 SEP 2020 to 08 OCT 2020