

# ILS or LOC/DME RWY 23R

LOC/DME I-NKT <b>108.9</b> Chan <b>26</b>	APCH CRS <b>234°</b>	Rwy ldg <b>7552</b> TDZE <b>23</b> Arprt Elev <b>29</b>
---	-------------------------	---

AL-471 [USN]

CHERRY POINT MCAS (CUNNINGHAM FLD) (KNKT)

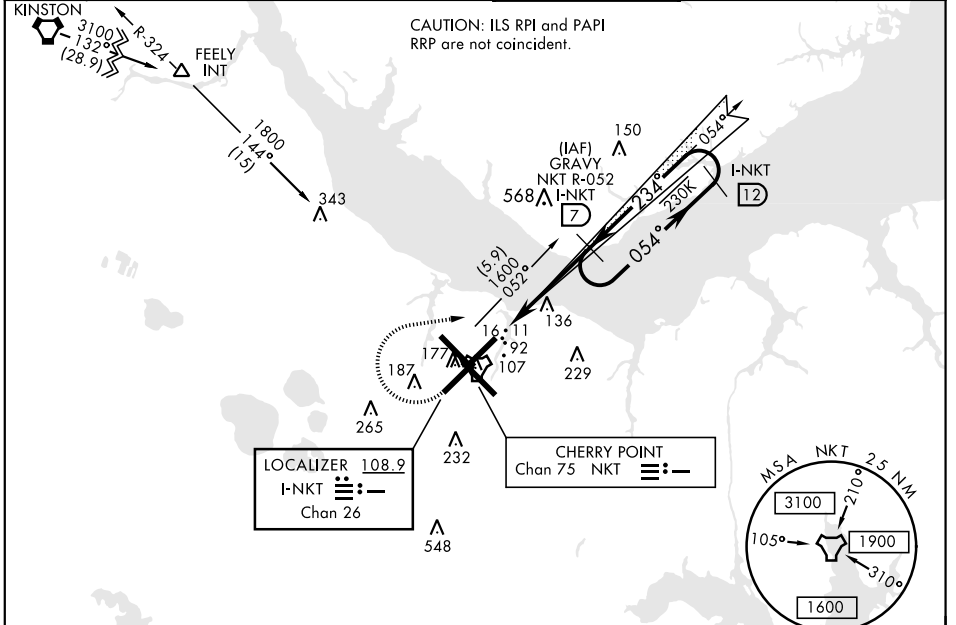
TACAN Required

▼ \* When ALS inop, increase vis to 3/4 mile.  
\*\* When ALS inop, increase vis to 1 mile.



MISSED APPROACH: Climb to 500, then climbing right turn to 2600 via NKT TACAN R-052 to GRAYV and hold. Continue climb in hold.

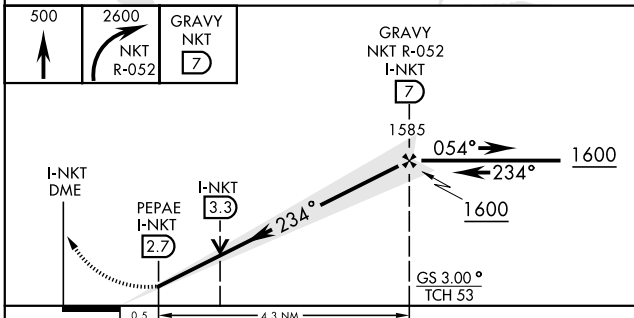
ATIS <b>127.475</b> <b>244.875</b>	CHERRY POINT APP CON (E) <b>119.75</b> <b>360.775</b> (abv 2600') (E) <b>132.575</b> <b>299.6</b> (at/blw 2600') (W) <b>119.35</b> <b>377.175</b> (N) <b>124.1</b> <b>268.7</b>	CHERRY POINT TOWER <b>121.3</b> <b>340.2</b>	GND CON <b>128.625</b> <b>239.025</b>	CLNC DEL <b>125.95</b> <b>316.125</b>	ASR/PAR
--	--	---	---	---	---------



SE-2, 10 SEP 2020 to 08 OCT 2020

SE-2, 10 SEP 2020 to 08 OCT 2020

EMERG SAFE ALT 100 NM 4100



ELEV 29	<b>D</b>	TDZE 23
---------	----------	---------

Rwy 32R, 23L, 14R, 5L 234° 4.8 NM marked in center mat area. from FAF

HIRL all Rwy REIL Rwy 5L and 14R Rwy 5L-23R ldg 7552', 14R-32L ldg 7551'

FAF to MAP 4.3 NM

Knots	60	90	120	150	180
Min:Sec	4:18	2:52	2:09	1:43	1:26

# ILS or LOC/DME RWY 23R