

# RNAV (GPS) RWY 14L

WAAS Chan <b>41117</b> <b>W14A</b>	APCH CRS <b>144°</b>	Rwy Idg TDZE Arpt Elev <b>8979</b> <b>26</b> <b>29</b>
--	-------------------------	---

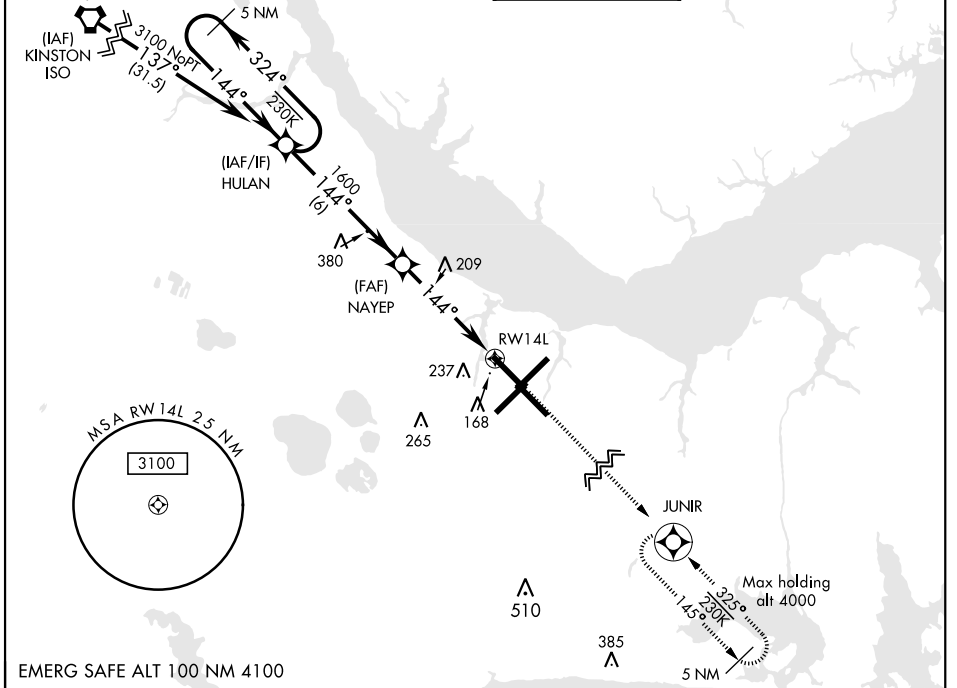
AL-471 [USN] CHERRY POINT MCAS (CUNNINGHAM FLD) (KNKT)

RNP APCH

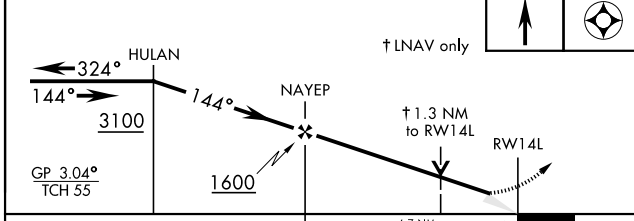
▼ For uncompensated Baro-VNAV systems, LNAV/VNAV NA below -15°C (5°F) or above 54°C (129°F).

MISSED APPROACH: Climb to 3100 direct JUNIR and hold.

CHERRY POINT APP CON		CHERRY POINT TOWER	GND CON	CLNC DEL	ASR/PAR
ATIS <b>127.475</b> <b>244.875</b>	(E) <b>119.75</b> <b>360.775</b> (abv 2600') (E) <b>132.575</b> <b>299.6</b> (at/blw 2600') (W) <b>119.35</b> <b>377.175</b> (N) <b>124.1</b> <b>268.7</b>	<b>121.3</b> <b>340.2</b>	<b>128.625</b> <b>239.025</b>	<b>125.95</b> <b>316.125</b>	

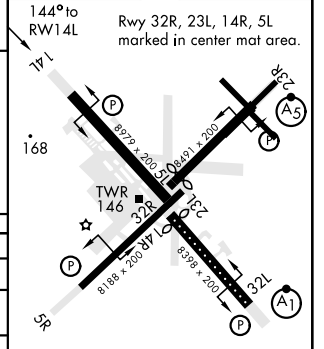


VGSI and RNAV glidepath not coincident



CATEGORY	A	B	C	D
LPV DA	226- <sup>3</sup> / <sub>4</sub>		200 (200- <sup>3</sup> / <sub>4</sub> )	
LNAV/VNAV DA	300- <sup>7</sup> / <sub>8</sub> 274 (300- <sup>7</sup> / <sub>8</sub> )	311- <sup>7</sup> / <sub>8</sub> 285 (300- <sup>7</sup> / <sub>8</sub> )	319- <sup>7</sup> / <sub>8</sub> 293 (300- <sup>7</sup> / <sub>8</sub> )	330- <sup>7</sup> / <sub>8</sub> 304 (400- <sup>7</sup> / <sub>8</sub> )
LNAV MDA	500-1	474 (500-1)	500-1 <sup>3</sup> / <sub>8</sub>	474 (500-1 <sup>3</sup> / <sub>8</sub> )
CIRCLING	580-1	551 (600-1)	600-1 <sup>1</sup> / <sub>2</sub> 571 (600-1 <sup>1</sup> / <sub>2</sub> )	600-2 571 (600-2)

ELEV 29 TDZE 26



HIRL all Rwy  
 REIL Rwy 5L and 14R  
 Rwy 5L-23R Idg 7552'  
 Rwy 14R-32L Idg 7551'

# RNAV (GPS) RWY 14L

SE-2, 10 SEP 2020 to 08 OCT 2020

SE-2, 10 SEP 2020 to 08 OCT 2020