

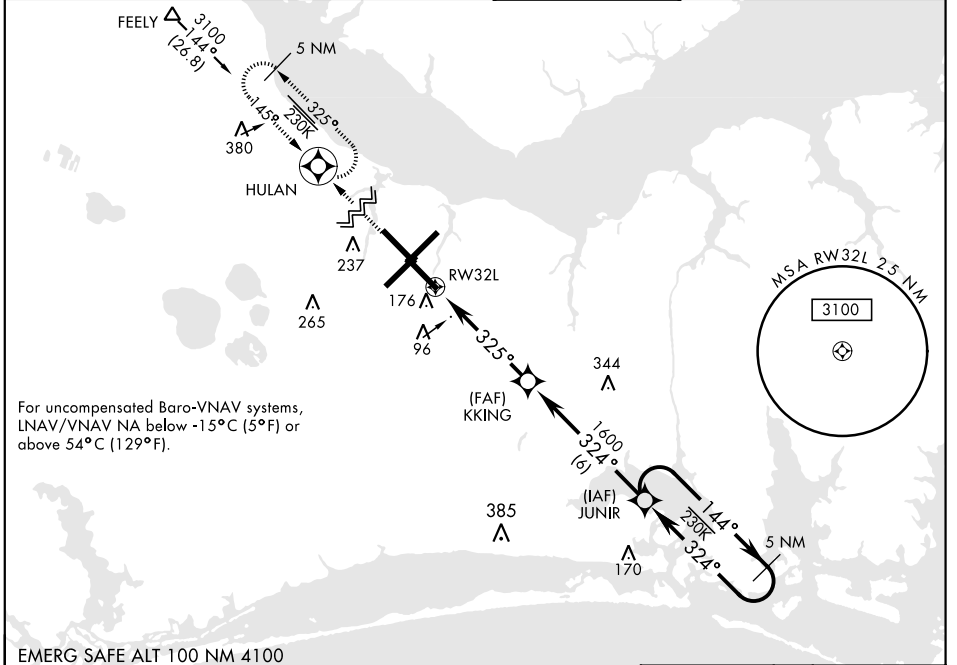
RNAV (GPS) RWY 32L

WAAS Chan 54304 W32A	APCH CRS 325°	Rwy ldg TDZE 26 Arprt Elev 29	7551
--	-------------------------	---	-------------

AL-471 [USN] CHERRY POINT MCAS (CUNNINGHAM FLD) (KNKT)

RNP APCH	ALSIF-1 	MISSED APPROACH: Climb to 3100 direct HULAN and hold.
<p>▼ *When ALS inop, increase vis to 3/4 mile. **When ALS inop, increase vis to 1 1/8 mile. ***When ALS inop, increase CAT AB vis to 1 mile, CAT CD vis to 1 3/8 miles.</p>		

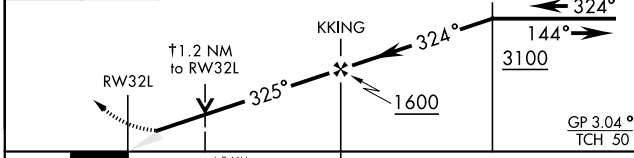
ATIS 127.475 244.875	CHERRY POINT APP CON (E) 119.75 360.775 (abv 2600') (E) 132.575 299.6 (at/blw 2600') (W) 119.35 377.175 (N) 124.1 268.7	CHERRY POINT TOWER 121.3 340.2	GND CON 128.625 239.025	CLNC DEL 125.95 316.125	ASR/ PAR
--	--	---	---	---	-------------



For uncompensated Baro-VNAV systems, LNAV/VNAV NA below -15°C (5°F) or above 54°C (129°F).

EMERG SAFE ALT 100 NM 4100

3100	HULAN	VGSI and RNAV glidepath no coincident. † LNAV only
------	-------	---



CATEGORY	A	B	C	D
LPV DA*		226-1/2	200	(200-1/2)
LNAV/ VNAV DA**		415-5/8	389	(400-3/8)
LNAV MDA***	480-1/2	454 (500-1/2)	480-7/8	454 (500-7/8)
CIRCLING	580-1	551 (600-1)	600-1 1/2 571 (600-1 1/2)	600-2 571 (600-2)

ELEV 29		TDZE 26
---------	--	---------

Rwy 32R, 23L, 14R, 5L marked in center mat area.

HIRL all Rwy
REIL Rwy 5L and 14R
Rwy 5L-23R 7552', 14R-32L ldg 7551'

RNAV (GPS) RWY 32L

SE-2, 10 SEP 2020 to 08 OCT 2020

SE-2, 10 SEP 2020 to 08 OCT 2020