

# RNAV (GPS) RWY 5R

WAAS Chan <b>71199</b> <b>W05A</b>	APCH CRS <b>054°</b>	Rwy Idg TDZE Arprt Elev	<b>8188</b> <b>27</b> <b>29</b>
--	-------------------------	-------------------------------	---------------------------------------

AL-471 [USN]

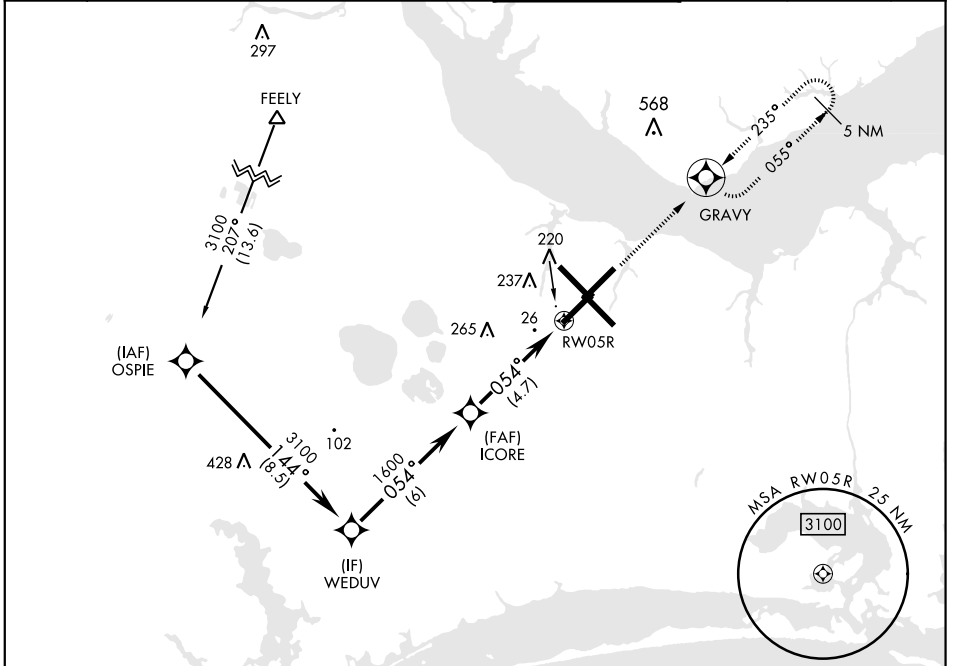
CHERRY POINT MCAS (CUNNINGHAM FLD) (KNKT)

RNP APCH

For uncompensated Baro-VNAV systems, LNAV/VNAV NA below -15°C (5°F) or above 54°C (129°F).

MISSED APPROACH: Climb to 3100 direct GRAVY and hold. Continue climb in hold to 3100.

ATIS <b>127.475</b> <b>244.875</b>	CHERRY POINT APP CON (E) <b>119.75</b> <b>360.775</b> (abv 2600') (E) <b>132.575</b> <b>299.6</b> (at/blw 2600') (W) <b>119.35</b> <b>377.175</b> (N) <b>124.1</b> <b>268.7</b>	CHERRY POINT TOWER <b>121.3</b> <b>340.2</b>	GND CON <b>128.625</b> <b>239.025</b>	CLNC DEL <b>125.95</b> <b>316.125</b>	ASR/ PAR
--	--	---	---	---	-------------



SE-2, 10 SEP 2020 to 08 OCT 2020

SE-2, 10 SEP 2020 to 08 OCT 2020

EMERG SAFE ALT 100 NM 4100

VGSI and RNAV glidepath not coincident.

ELEV	29	TDZE	27
------	----	------	----

Rwy 32R, 23L, 14R, 5L marked in center mat area.

CATEGORY	A	B	C	D
LPV DA		227-¾	200	(200-¾)
LNAV/VNAV DA		398-1	371	(400-1)
LNAV MDA	500-1	473 (500-1)	500-1½	473 (500-1½)
CIRCLING	580-1	551 (600-1)	600-1½	600-2
			571 (600-1½)	571 (600-2)

HIRL all Rwy  
REIL Rwy 5L and 14R  
Rwy 5L-23R Idg 7552',  
14R-32L Idg 7551'

# RNAV (GPS) RWY 5R