

TACAN RWY 32L

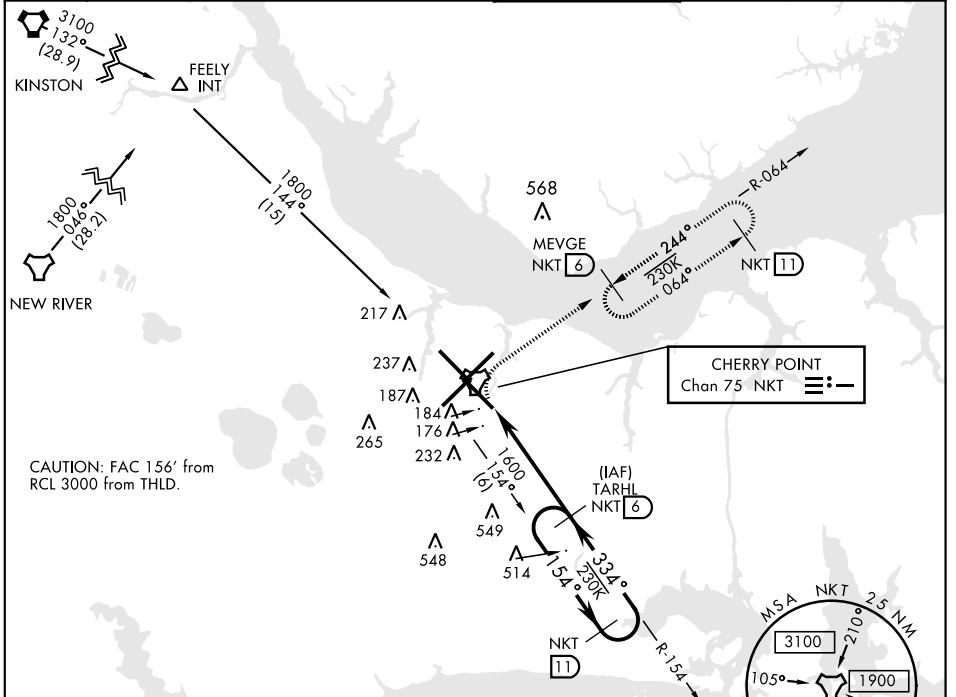
TACAN NKT Chan 75	APCH CRS 334°	Rwy ldg TDZE Arprt Elev 7551 26 29	AL-471 [USN]	CHERRY POINT MCAS (CUNNINGHAM FLD) (KNKT)
-----------------------------	-------------------------	--	--------------	---

▼ * When ALS inop, increase vis CAT AB to 1 mile, CAT CD to 1 3/8 miles.

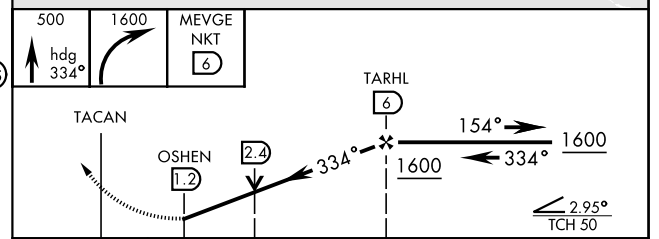
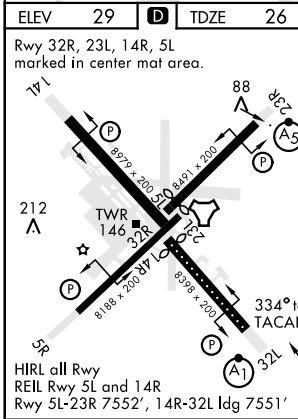
ALS F-1 (A1)

MISSED APPROACH: Climb on hdg 334°. At 500 climbing right turn to 1600 direct MEVGE and hold.

ATIS 127.475 244.875	CHERRY POINT APP CON (E) 119.75 360.775 (abv 2600') (E) 132.575 299.6 (at/blw 2600') (W) 119.35 377.175 (N) 124.1 268.7	CHERRY POINT TOWER 121.3 340.2	GND CON 128.625 239.025	CLNC DEL 125.95 316.125	ASR/PAR
--	--	---	---	---	---------



EMERG SAFE ALT 100 NM 4100



CATEGORY	A	B	C	D
S-32L *	480-1/2	454 (500-1/2)	480-7/8 454 (500-7/8)	600-2
C CIRCLING	580-1	551 (600-1)	571 (600-1/2)	571 (600-2)

TACAN RWY 32L

SE-2, 10 SEP 2020 to 08 OCT 2020

SE-2, 10 SEP 2020 to 08 OCT 2020