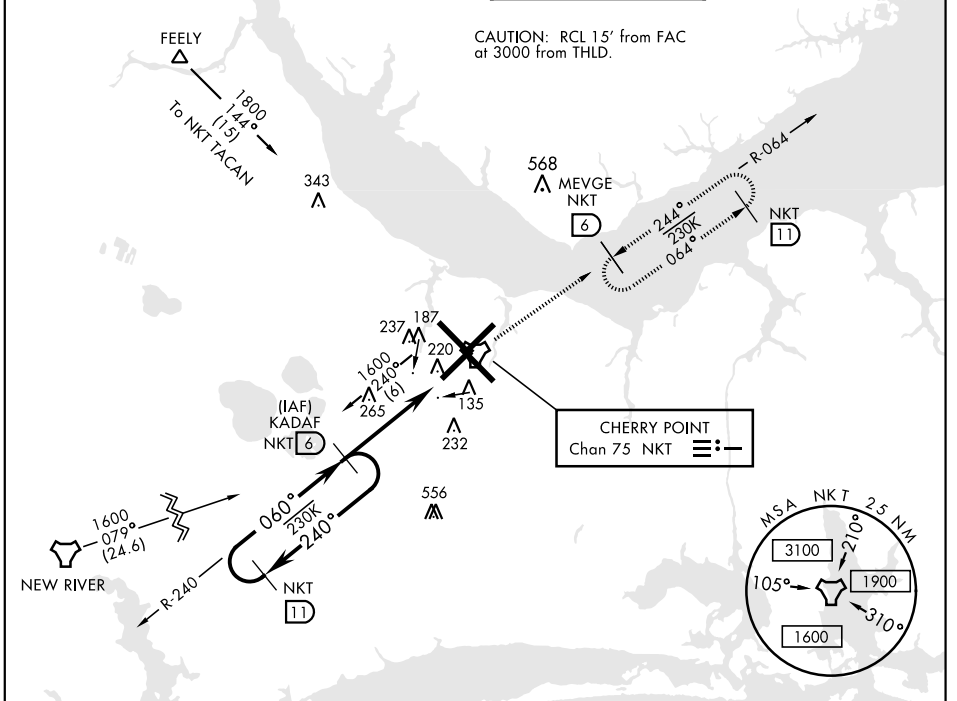


# TACAN RWY 5R

TACAN NKT Chan <b>75</b>	APCH CRS <b>060°</b>	Rwy ldg TDZE <b>27</b> Arprt Elev <b>29</b>	AL-471 [USN] CHERRY POINT MCAS (CUNNINGHAM FLD) (KNKT)
-----------------------------	-------------------------	--	--

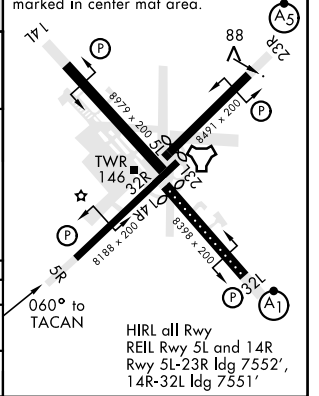
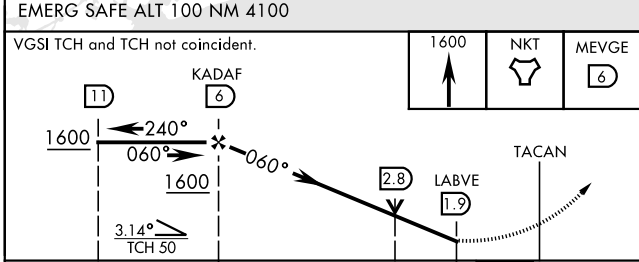
**MISSED APPROACH:** Climb to 1600 direct NKT TACAN, then direct MEVGE and hold.

ATIS <b>127.475</b> <b>244.875</b>	CHERRY POINT APP CON (E) <b>119.75 360.775</b> (abv 2600') (E) <b>132.575 299.6</b> (at/blw 2600') (W) <b>119.35 377.175</b> (N) <b>124.1 268.7</b>	CHERRY POINT TOWER <b>121.3 340.2</b>	GND CON <b>128.625 239.025</b>	CLNC DEL <b>125.95 316.125</b>	ASR/ PAR
--	--	--	-----------------------------------	-----------------------------------	-------------



ELEV <b>29</b>	TDZE <b>27</b>
----------------	----------------

Rwy 32R, 23L, 14R, 5L marked in center mat area.



CATEGORY	A	B	C	D
S-5R	500-1 473 (500-1)		500-1½ 473 (500-1½)	
CIRCLING	580-1 551 (600-1)		600-1½ 571 (600-1½)	600-2 571 (600-2)

# TACAN RWY 5R

SE-2, 10 SEP 2020 to 08 OCT 2020

SE-2, 10 SEP 2020 to 08 OCT 2020