

WAAS CH 50300 W12A	APP CRS 122°	Rwy Idg TDZE Apt Elev	6001 74 79
--	------------------------	-----------------------------	---------------------------------------

RNAV (GPS) RWY 12

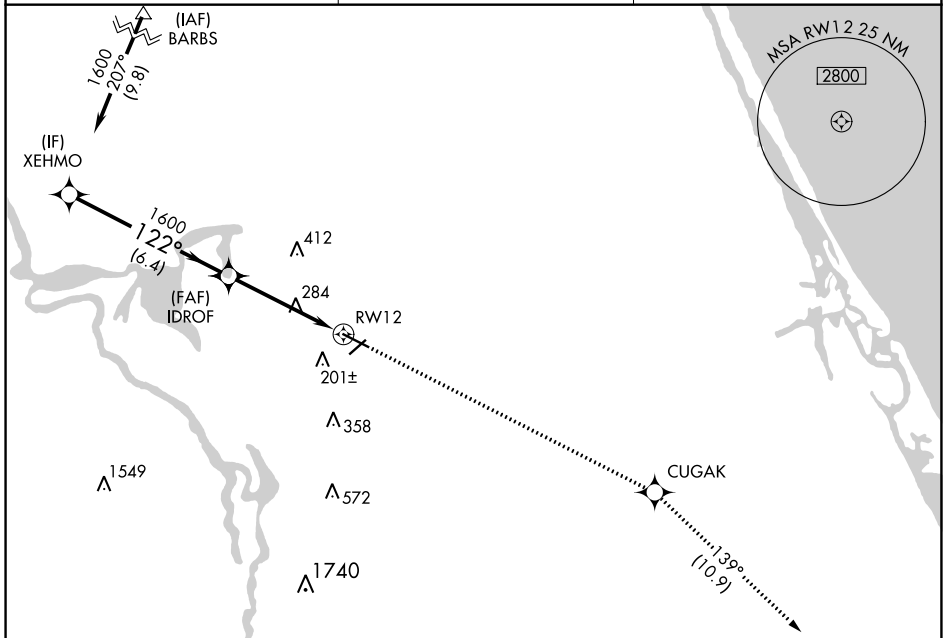
DELAND MUNI-SIDNEY H TAYLOR FIELD (DED)

RNP APCH.

⚠ For uncompensated Baro-VNAV systems, LNAV/VNAV NA below -15°C (5°F) or above 54°C (130°F). Baro-VNAV and VDP NA when using Daytona Beach Infil altimeter setting. Rwy 12 helicopter visibility reduction below 3/4 SM NA. When local altimeter setting not received use Daytona Beach Infil altimeter setting increase all DA/MDA 40 feet, increase LNAV/VNAV visibility 1/2 SM all Cats.

MISSED APPROACH: Climb to 2000 direct CUGAK then on track 139° to OAKIE and hold.

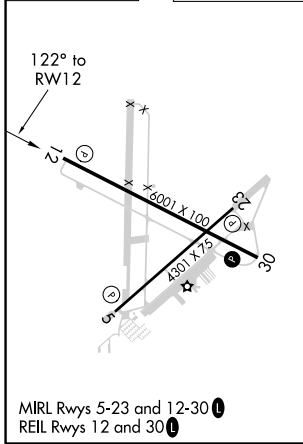
AWOS-3 119.575	DAYTONA APP CON 125.35 322.3	UNICOM 123.075 (CTAF) 📻
--------------------------	--	--



SE-3, 10 SEP 2020 to 08 OCT 2020

SE-3, 10 SEP 2020 to 08 OCT 2020

ELEV 79	TDZE 74
----------------	----------------



VGSi and RNAV glidepath not coincident (VGSi Angle 3.00/TCH 51).				
XEHMO	IDROF	2000	CUGAK	OAKIE
1600	1600	↑	✧	△
GP 3.00° TCH 40		*1.5 NM to RWY 12		*LNAV only.
6.4 NM		3.1 NM		1.5 NM
CATEGORY	A	B	C	D
LPV DA	404-1 1/4 330 (400-1 1/4)			
LNAV/VNAV DA	528-1 1/2 454 (500-1 1/2)			
LNAV MDA	600-1 526 (600-1)		600-1 1/2 526 (600-1 1/2)	