

WAAS CH 45700 W23A	APP CRS 234°	Rwy Idg TDZE Apt Elev	4301 78 79
--	------------------------	-----------------------------	---------------------------------------

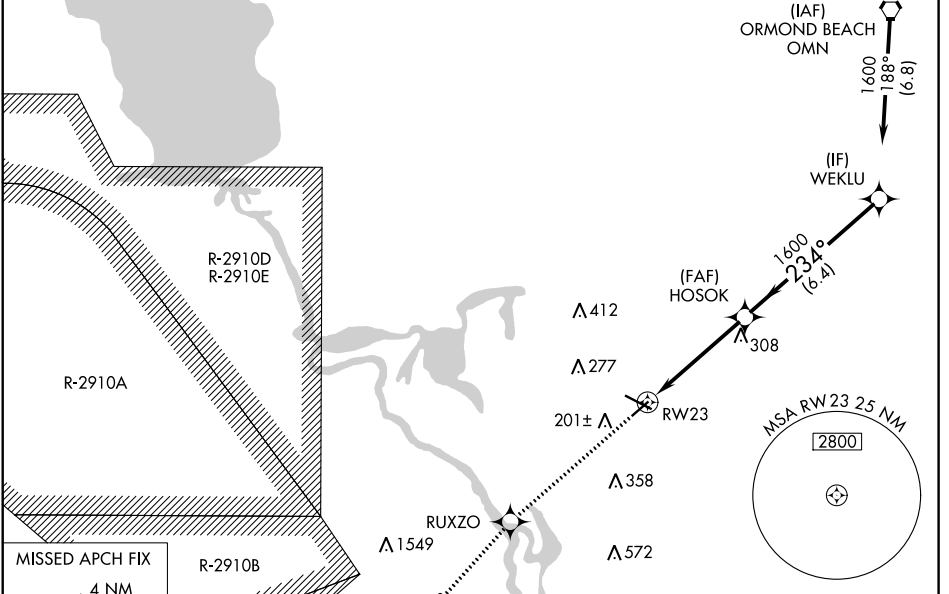
RNAV (GPS) RWY 23
DELAND MUNI-SIDNEY H TAYLOR FIELD (DED)

RNP APCH.

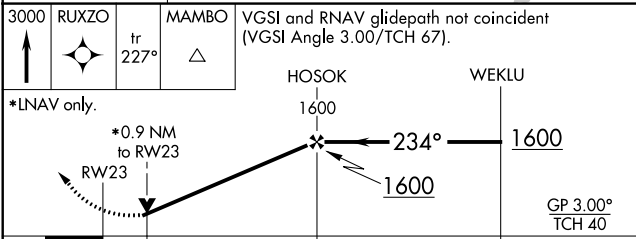
▼ For uncompensated Baro-VNAV systems, LNAV/VNAV NA below -15°C (5°F) or above 54°C (130°F).
 ▲ Baro-VNAV and VDP NA when using Daytona Beach Intl altimeter setting. Rwy 23 helicopter visibility reduction below 3/4 SM NA. When local altimeter setting not received, use Daytona Beach Intl altimeter setting and increase all DA 38 feet and all MDA 40 feet, increase LPV visibility 1/8 SM all Cats.

MISSED APPROACH: Climb to 3000 direct RUXZO and on track 227° to MAMBO and hold.

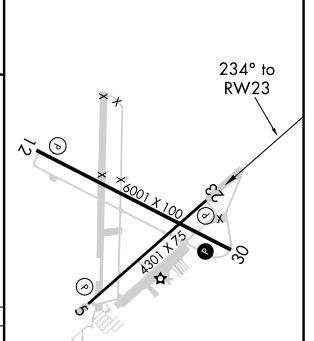
AWOS-3 119.575	DAYTONA APP CON 125.35 322.3	UNICOM 123.075 (CTAF) 0
--------------------------	--	-----------------------------------



3000 RUXZO	tr 227°	MAMBO	VGSI and RNAV glidepath not coincident (VGSI Angle 3.00/TCH 67).
------------	---------	-------	--



ELEV 79	TDZE 78
---------	---------



CATEGORY	A	B	C	D
LPV DA		374-1	296 (300-1)	
LNAV/VNAV DA		414-1 1/4	336 (400-1 1/4)	
LNAV MDA		420-1	342 (400-1)	

MIRL Rwy 5-23 and 12-30
 REIL Rwy 12 and 30

SE-3, 10 SEP 2020 to 08 OCT 2020

SE-3, 10 SEP 2020 to 08 OCT 2020