

# HI-TACAN RWY 32

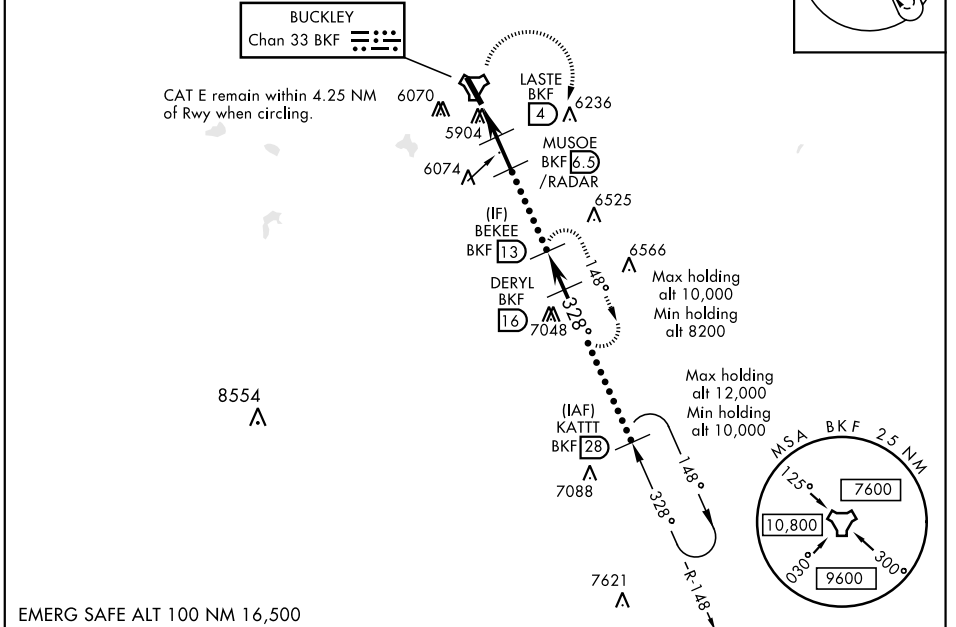
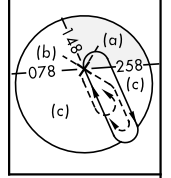
TACAN BKF Chan <b>33</b>	APCH CRS <b>328°</b>	Rwy ldg <b>11,006</b> TDZE <b>5663</b> Arprt Elev <b>5663</b>	JAL-538 [USAF]	BUCKLEY AFB (KBKF)
-----------------------------	-------------------------	---	----------------	--------------------

**ALSF-1**  MISSED APPROACH: Climbing right turn to 8200 and intercept BKF TACAN R-148 direct BEKEE and hold or as directed by ATC.

\* When ALS inop, increase CAT CDE vis to 1 3/4 miles.  
\*\* Circling NA East of Rwy 14-32.

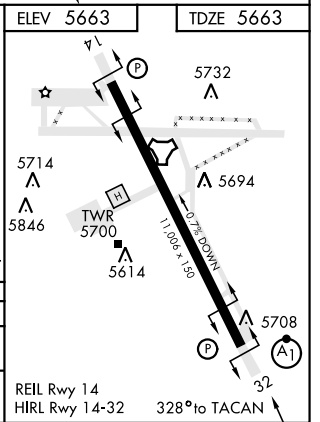
ATIS * <b>119.675 259.3</b>	DENVER APP CON <b>128.45 251.075</b>	BUCKLEY TOWER * <b>121.0 291.675</b>	GND CON <b>121.6 275.8</b>	CLNC DEL <b>121.6 275.8</b>
--------------------------------	---	---	-------------------------------	--------------------------------

Missed approach requires use of RNAV or ATC RADAR monitoring.



EMERG SAFE ALT 100 NM 16,500

8200 BKF R-148	BEKEE BKF (13)			
TACAN	CENAR (1.7)	LASTE (4)	MUSOE (6.5)/RADAR	BEKEE (13)
			DERYL (16)	KATT (28)
				10,000
				8100
				8000
				7400
				6600
				3.02°
				TCH 45
CATEGORY	C	D	E	
S-32 *	6280-1 3/8	617 (700-1 3/8)		
CIRCLING **	6360-2 697 (700-2)	6400-2 1/4 737 (800-2 1/4)	6420-2 3/4 757 (800-2 3/4)	



# HI-TACAN RWY 32



SW-1, 10 SEP 2020 to 08 OCT 2020

SW-1, 10 SEP 2020 to 08 OCT 2020