

AURORA, COLORADO

RNAV (GPS) RWY 32

APCH CRS 323°	Rwy Idg 11,006
	TDZE 5663
	Arprt Elev 5663

AL-538 (USAF)

BUCKLEY AFB (KBKF)

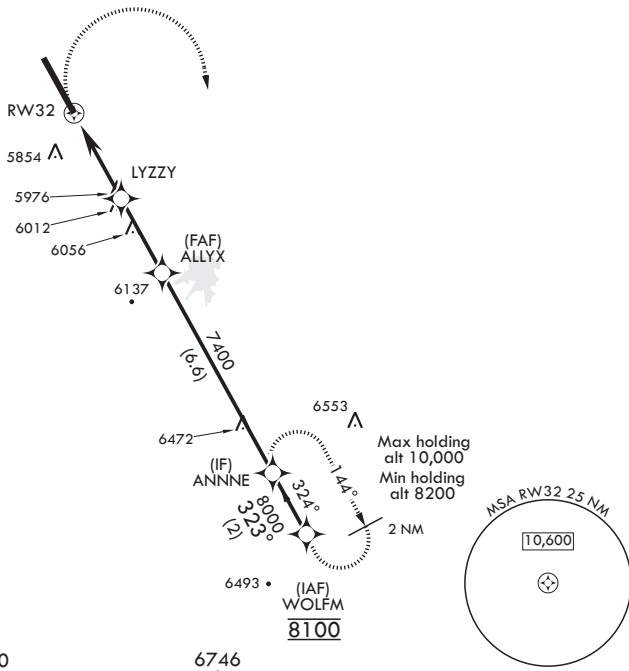
▼ * When ALS inop increase CAT AB RVR to 55, vis to 1 mile; CAT CD vis to 1 3/4 miles.
** Circling NA East of Rwy 14-32.

ALSF-1 MISSED APPROACH: Climbing right turn to 8200 to ANNNE and hold or as directed by ATC.

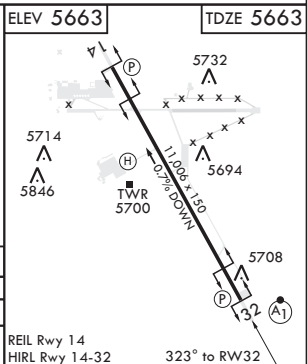
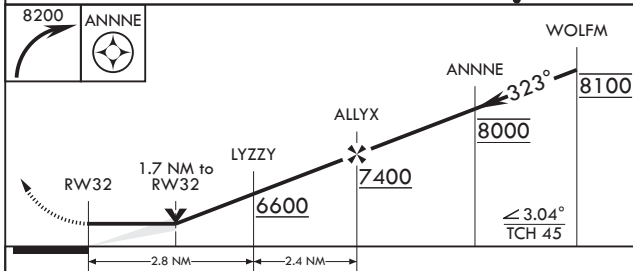
ATIS★ 119.675 259.3	DENVER APP CON/DEP CON 128.45 251.075	TOWER★ 121.0 291.675	GND CON 121.6 275.8	CLNC DEL 121.6 275.8
-------------------------------	---	--------------------------------	-------------------------------	--------------------------------

DME/DME RNP -0.3 NA

GPS REQUIRED



EMERG SAFE ALT 100 NM 16,500



CATEGORY	A	B	C	D
RNAV MDA*	6260/24 597 (600-1/2)	6260-1 1/4 597 (600-1 1/4)	6360-2 697 (700-2)	6400-2 1/4 737 (800-2 1/4)
CIRCLING**	6260-1 597 (600-1)			

REIL Rwy 14
HIRL Rwy 14-32 323° to RWY 32

AURORA, COLORADO

39°42'N - 104°45'W

BUCKLEY AFB (KBKF)

Amdt 1 11OCT18

RNAV (GPS) RWY 32

SW-1, 10 SEP 2020 to 08 OCT 2020

SW-1, 10 SEP 2020 to 08 OCT 2020