

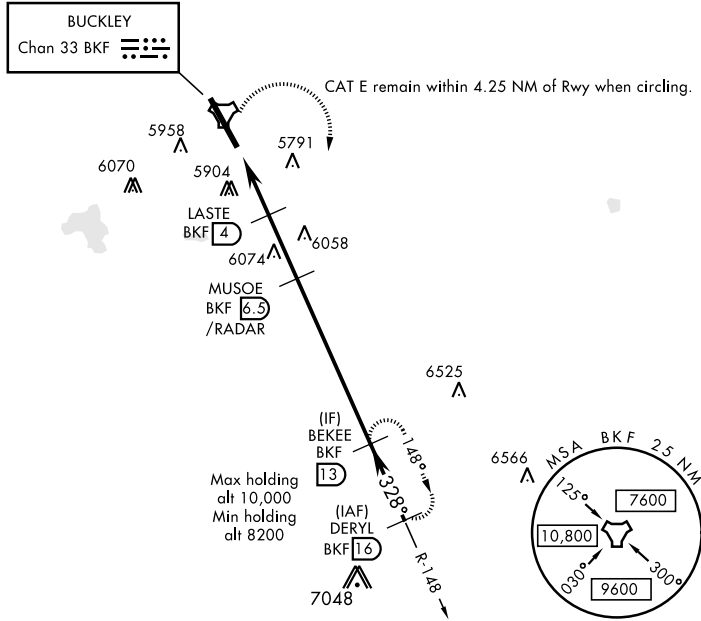
# TACAN RWY 32

TACAN BKF Chan <b>33</b>	APCH CRS <b>328°</b>	Rwy ldg <b>11,006</b> TDZE <b>5663</b> Arprt Elev <b>5663</b>	AL-538 [USAF]	BUCKLEY AFB (KBKF)
-----------------------------	-------------------------	---	---------------	--------------------

A1 **ALSIF-1**  
**MISSED APPROACH:** Climbing right turn to 8200 and intercept BKF TACAN R-148 direct BEKEE and hold or as directed by ATC.  
 \* When ALS inop, increase CAT AB RVR to 55 and vis to 1 mile, CAT CDE vis to 1 3/4 miles.  
 \*\* Circling NA east of Rwy 14-32.

ATIS ★ <b>119.675 259.3</b>	DENVER APP CON <b>128.45 251.075</b>	BUCKLEY TOWER ★ <b>121.0 291.675</b>	GND CON <b>121.6 275.8</b>	CLNC DEL <b>121.6 275.8</b>
--------------------------------	---	---	-------------------------------	--------------------------------

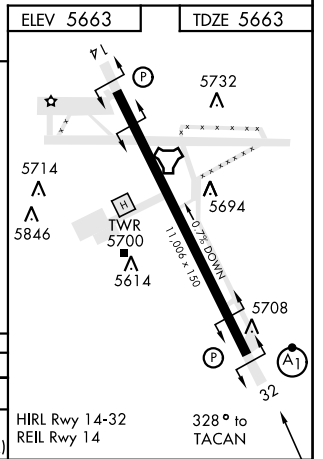
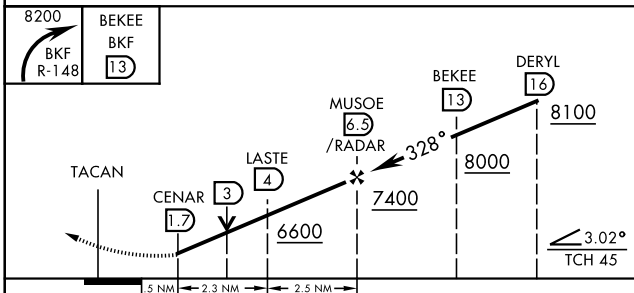
Missed approach requires use of RNAV or ATC RADAR monitoring.



SW-1, 10 SEP 2020 to 08 OCT 2020

SW-1, 10 SEP 2020 to 08 OCT 2020

EMERG SAFE ALT 100 NM 16,500



CATEGORY	A	B	C	D	E
S-32*	6280/24	617 (700-1/2)	6280-1 3/8	617 (700-1 3/8)	
CIRCLING**	6280-1	617 (700-1)	6360-2 697 (700-2)	6400-2 1/4 737 (800-2 1/4)	6420-2 3/4 757 (800-2 3/4)

HIRL Rwy 14-32  
 REIL Rwy 14  
 328° to TACAN

# TACAN RWY 32