

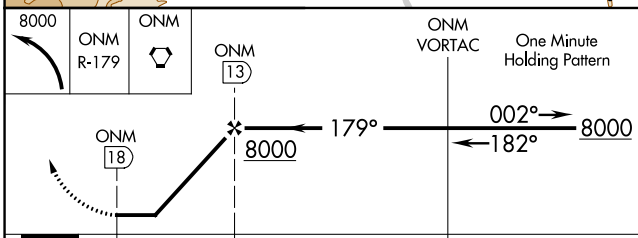
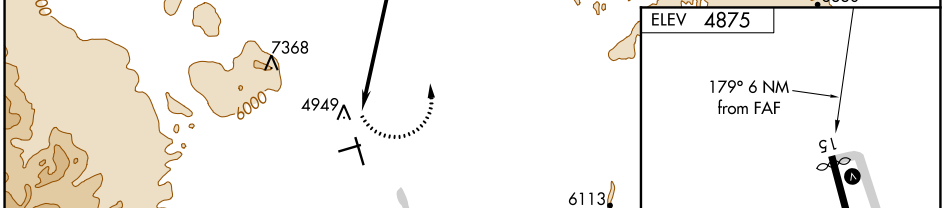
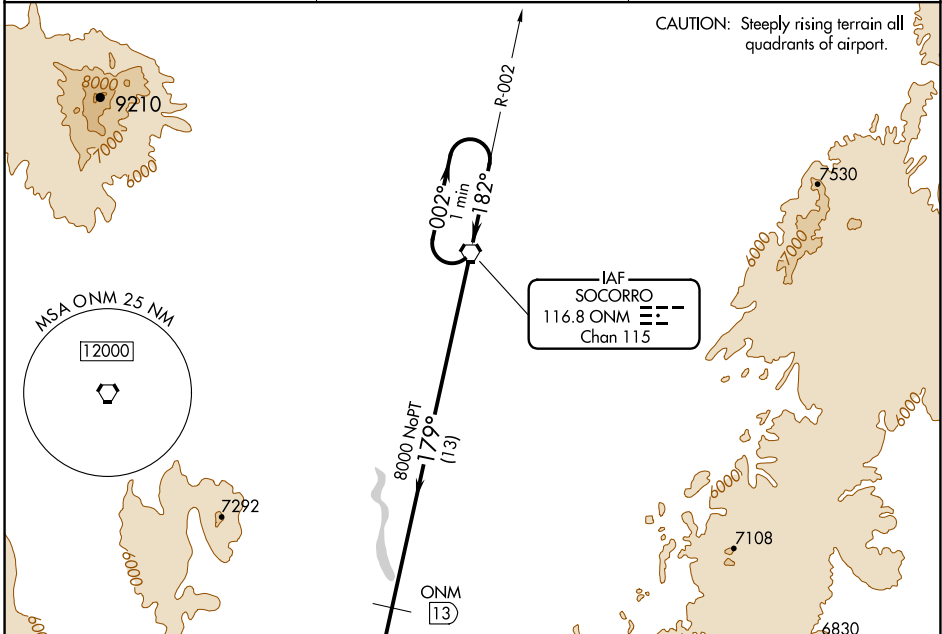
VORTAC ONM 116.8 Chan 115	APP CRS 179°	Rwy Idg TDZE Apt Elev N/A N/A 4875
---	------------------------	--

VOR/DME-A
SOCORRO MUNI (ONM)

⚠ NA When local altimeter not available, procedure not authorized.
Circling not authorized west of Rwy 15-33.
If arrival over Socorro VOR is above 8000 descend in the holding pattern to 8000 before commencing approach.

MISSED APPROACH: Climbing left turn to 8000 intercept ONM R-179 direct to ONM VORTAC and hold.

AWOS-3 118.325	ALBUQUERQUE CENTER 124.325 288.25	UNICOM 122.8 (CTAF) 0
--------------------------	---	---------------------------------



CATEGORY	A	B	C	D
CIRCLING	6540-1¼ 1665 (1700-1¼)	6540-1½ 1665 (1700-1½)	6540-3 1665 (1700-3)	NA

ELEV 4875

179° 6 NM from FAF

51

24

33

4590 X 60

3841 X 75

4060 X 60

2.0% UP

0.6% UP

MIRL Rwy 15-33 and 6-24 0

SW-1, 10 SEP 2020 to 08 OCT 2020

SW-1, 10 SEP 2020 to 08 OCT 2020