

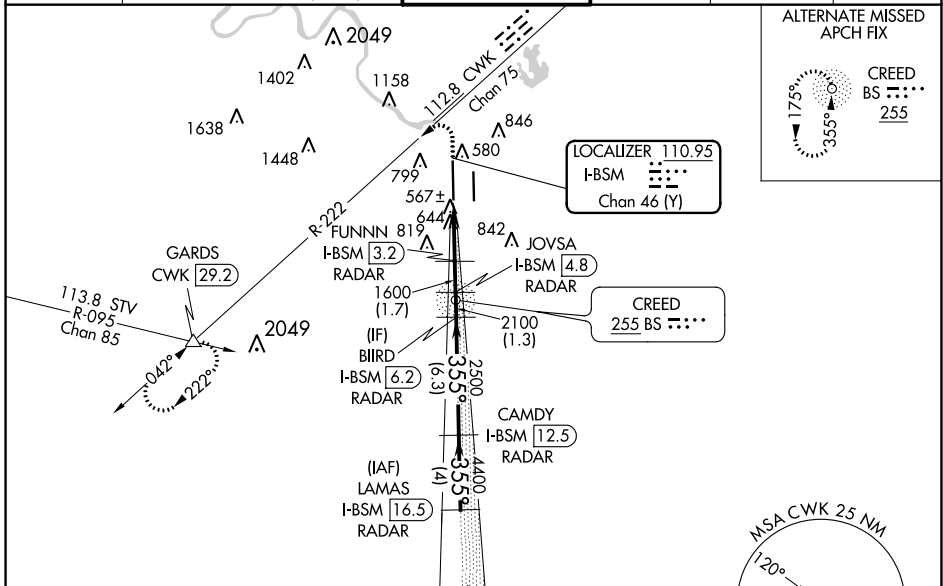
LOC/DME I-BSM	APP CRS	Rwy Idg	12250
110.95	355°	TDZE	496
Chan 46 (Y)		Apt Elev	542

ILS or LOC RWY 35L

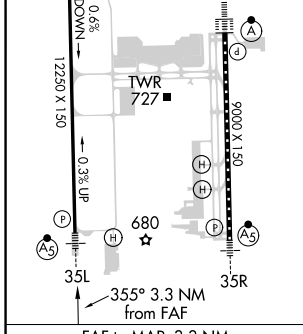
AUSTIN-BERGSTROM INTL (AUS)

DME or RADAR required.	MALSR	MISSED APPROACH: Climb to 1000 then climbing left turn to 3500 on heading 250° and CWK VORTAC R-222 to GARDS INTL/CWK 29.2 DME and hold.
<p>▼ Simultaneous approach authorized. For inop ALS, increase S-ILS 35L Cat E visibility to RVR 4000, S-LOC 35L Cats C/D/E visibility to RVR 6000. Rwy 35L helicopter visibility reduction below 3/4 SM NA.</p> <p>▲ **RVR 1800 authorized with use of FD or AP or HUD to DA.</p>		

D-ATIS	AUSTIN APP CON	AUSTIN TOWER	GND CON	CLNC DEL	CPDLC
124.4	127.225 317.65 (EAST) 120.875 270.25 (SOUTH) 119.0 370.85 (WEST)	121.0 281.5	121.9 348.6	125.5 263.0	



ELEV 542	D TDZE 496
HIRL Rwy 17L-35R and 17R-35L TDZ/CL Rwy 17L and 35R	



1000	3500	CWK R-222	GARDS	VGSI and ILS glidepath not coincident (VGSI Angle 3.00/TCH 60).	LAMAS
hdg 250°					CAMDY I-BSM [12.5] RADAR
*LOC only.		I-BSM DME ANTENNA	FUNNN I-BSM [3.2] RADAR	BIIRD I-BSM [6.2] RADAR	
		I-BSM [0.2]	*I-BSM [0.9] RADAR		
		1600	2100	2500	3550
		1600	4400	5000	
		1.1 NM	2.2 NM	1.7 NM	1.3 NM
			6.3 NM	4 NM	
					GS 3.00° TCH 54

CATEGORY	A	B	C	D	E
S-ILS 35L**	696/24 200 (200-1/2)				
S-LOC 35L	900/24 404 (400-1/2)		900/40 404 (400-3/4)		

SC-3, 10 SEP 2020 to 08 OCT 2020

SC-3, 10 SEP 2020 to 08 OCT 2020