


RNAV (RNP) Z RWY 17L

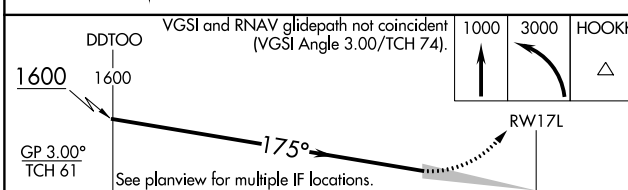
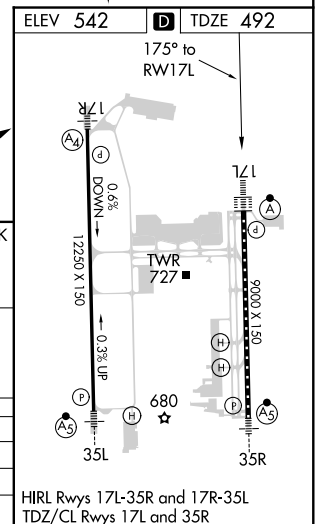
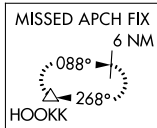
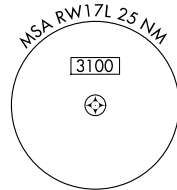
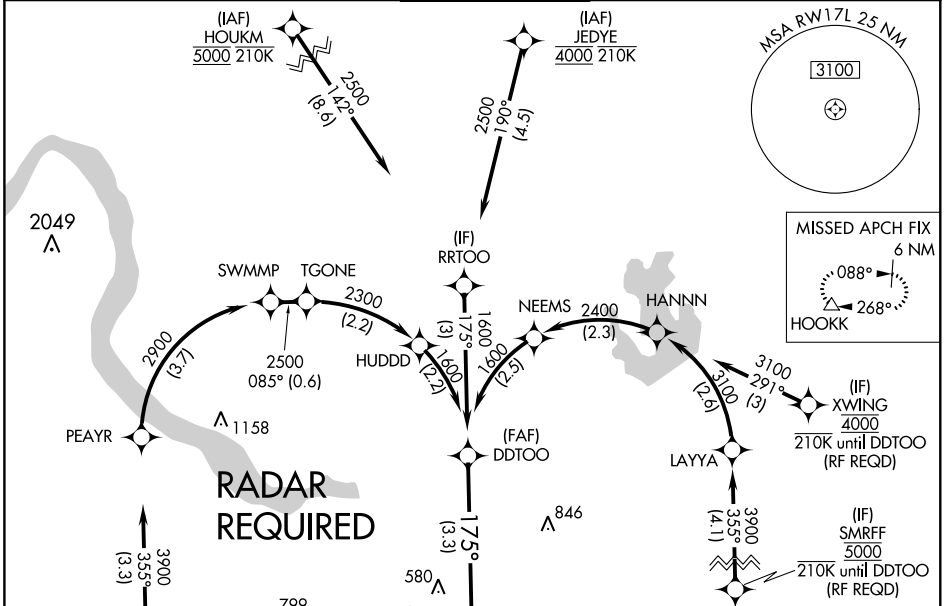
AUSTIN-BERGSTROM INTL (AUS)

APP CRS	Rwy Idg	9000
175°	TDZE	492
	Apt Elev	542

▼ For uncompensated Baro-VNAV systems, procedure NA below -6°C (22°F) or above 54°C (130°F). Simultaneous approach authorized. GPS required. For inop ALS, increase RNP 0.30 all Cats visibility to 1 1/4 SM.

ALSF-2

MISSED APPROACH:
 Climb to 1000 then climbing left turn to 3000 direct HOOKK and hold.

D-ATIS	AUSTIN APP CON	AUSTIN TOWER	GND CON	CLNC DEL	CPDLC
124.4	127.225 317.65 (EAST) 120.875 270.25 (SOUTH) 119.0 370.85 (WEST)	121.0 281.5	121.9 348.6	125.5 263.0	



DDTOO	1600	1600	1000	3000	HOOKK
GP 3.00° TCH 61	See planview for multiple IF locations.				
CATEGORY	A	B	C	D	
RNP 0.24 DA		830/30	338 (300-3/4)		
RNP 0.30 DA		890/45	398 (400-3/4)		

AUTHORIZATION REQUIRED

SC-3, 10 SEP 2020 to 08 OCT 2020

SC-3, 10 SEP 2020 to 08 OCT 2020