

APP CRS 229°	Rwy Idg TDZE Apt Elev	5898 13 13
------------------------	-----------------------------	---------------------------------------

RNAV (RNP) Z RWY 23

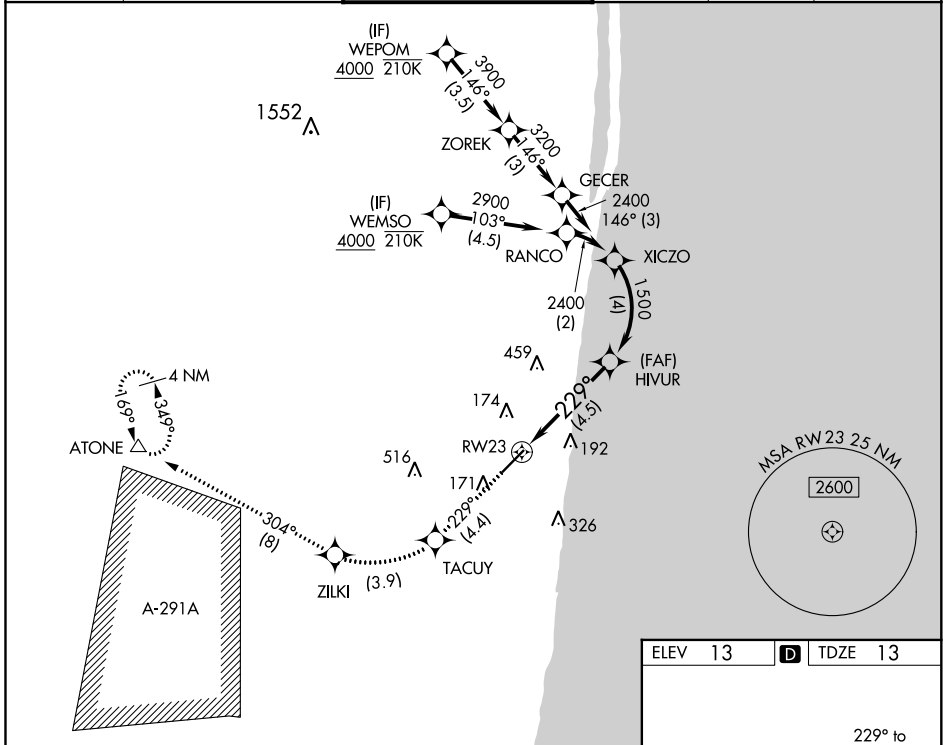
BOCA RATON (BCT)

RNP AR APCH. RF Required.

▼ For uncompensated Baro-VNAV systems, procedure NA below -15°C or above 54°C. In minimum visibility conditions, bright lights on highway ¼ mile north of airport may be mistaken for runway lights.

MISSED APPROACH: Climb to 2100 on track 229° to TACUY, right turn to ZILKI and track 304° to ATONE and hold.

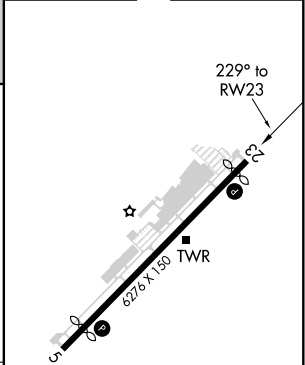
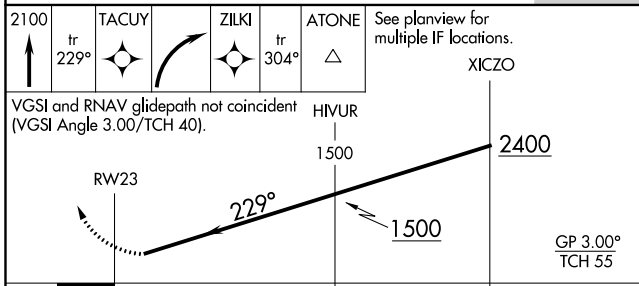
AWOS-3 121.125	PALM BEACH APP CON 125.2 343.6	BOCA RATON TOWER ★ 118.425 (CTAF) 0	GND CON 121.8	CLNC DEL 121.8	CLNC DEL 127.35 (when twr closed)
--------------------------	--	---	-------------------------	--------------------------	--



SE-3, 10 SEP 2020 to 08 OCT 2020

SE-3, 10 SEP 2020 to 08 OCT 2020

ELEV 13	D TDZE 13
---------	------------------



2100	TACUY	ZILKI	ATONE	See planview for multiple IF locations.
↑	tr 229°	↘	tr 304°	
VGSI and RNAV glidepath not coincident (VGSI Angle 3.00/TCH 40).				
RWY 23		HIVUR	XICZO	
		1500	2400	
		229°		
		1500		
		GP 3.00° TCH 55		
4.5 NM		4 NM		
CATEGORY	A	B	C	D
RNP 0.30 DA		519-1 3/8	506 (600-1 3/8)	

AUTHORIZATION REQUIRED

MIRL Rwy 5-23 0
REIL Rwy 5 and 23 0