

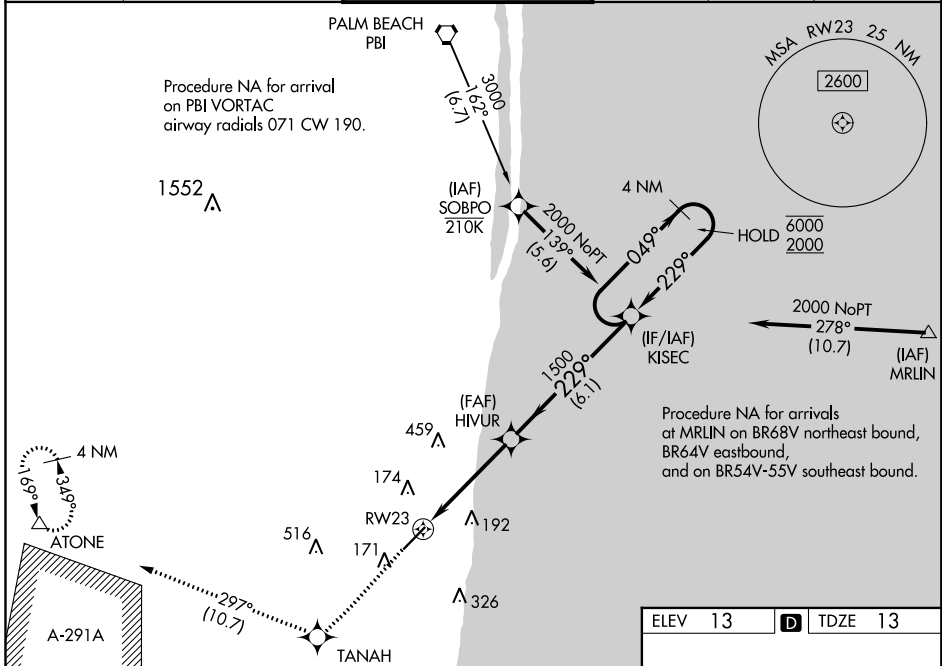
WAAS CH 42801 W23A	APP CRS 229°	Rwy Idg TDZE Apt Elev	5898 13 13
--	------------------------	-----------------------------	---------------------------------------

RNAV (GPS) Y RWY 23

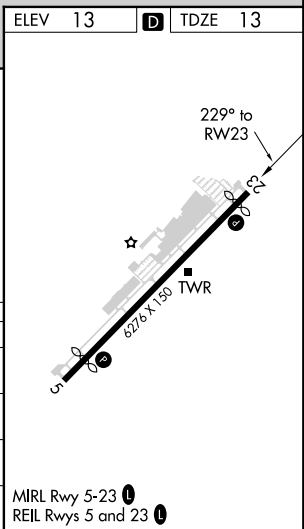
BOCA RATON (BCT)

RNP APCH.	MISSED APPROACH: Climb to 2100 direct TANAH and on track 297° to ATONE and hold.
<p>▼ Rwy 23 helicopter visibility reduction below ¾ SM NA. For uncompensated Baro-VNAV systems, procedure NA below -15°C or above 54°C. In minimum visibility conditions, bright lights on highway ¼ mile north of airport may be mistaken as runway lights.</p>	

AWOS-3 121.125	PALM BEACH APP CON 125.2 343.6	BOCA RATON TOWER ★ 118.425 (CTAF) 0	GND CON 121.8	CLNC DEL 121.8	CLNC DEL 127.35 (when twr closed)
--------------------------	--	---	-------------------------	--------------------------	--



2100	TANAH	tr 297°	ATONE	VGSI and RNAV glidepath not coincident (VGSI Angle 3.00/TCH 40).	4 NM Holding Pattern
*LNAV only.			HIVUR		
		*1.3 NM to RW23	1500	229°	6000 / 2000
				1500	GP 3.00° TCH 55
CATEGORY	A	B	C	D	
LPV DA	263-7/8		250 (300-7/8)		
LNAV/DA	357-1 1/8		344 (400-1 1/8)		
LNAV MDA	480-1	467 (500-1)	480-1 3/8	467 (500-1 3/8)	
CIRCLING	680-1	667 (700-1)	680-1 3/4	880-2 3/4	
			667 (700-1 3/4)	867 (900-2 3/4)	



SE-3, 10 SEP 2020 to 08 OCT 2020

SE-3, 10 SEP 2020 to 08 OCT 2020