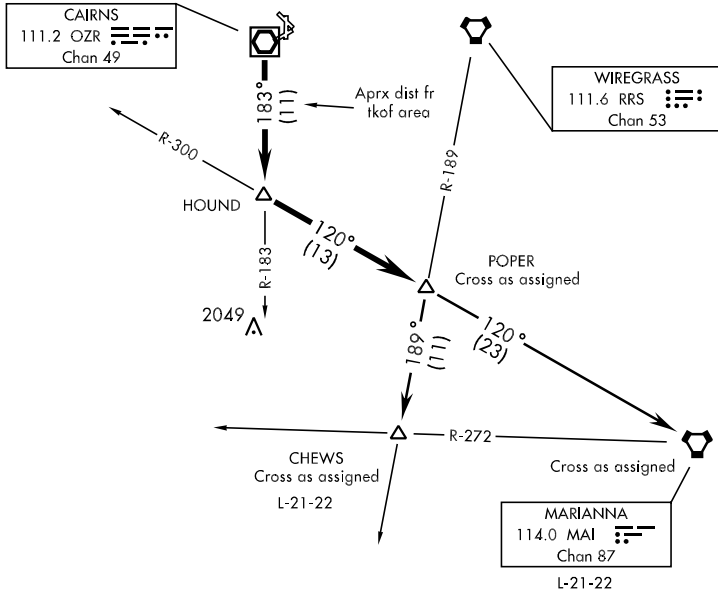


POPER-ONE DEPARTURE (POPER1•POPER)

SL-577 [USA]

ATIS 111.2 316.15
 CLNC DEL
 118.075 380.1
 GND CON
 121.9 288.25
 CAIRNS TOWER ★
 135.2 (CTAF) 248.55
 DEP CON
 133.75 270.35
 JACKSONVILLE CENTER
 120.2 346.4



SE-4, 10 SEP 2020 to 08 OCT 2020

SE-4, 10 SEP 2020 to 08 OCT 2020

DEPARTURE ROUTE DESCRIPTION

TAKE-OFF RWY 6, 18 or 36: Climbing right turn heading 205°

TAKE-OFF RWY 24: Climbing left turn heading 120°

TAKE-OFF PAD C OR G: Climb heading 178° to 1000, then right turn heading 205°
 to intercept OZR VOR/DME R-183 to HOUND INT, and via MAI VORTAC R-300 to POPER INT. Thence via assigned Transition. Maintain 2000, expect clearance to requested altitude/flight level ten (10) minutes after departure.

CHEWS TRANSITION: (POPER 1•CHEWS) Proceed via RRS VORTAC R-189 to CHEWS INT.

MARIANNA TRANSITION: (POPER 1•MAI) Proceed via MAI R-300 to MAI VORTAC.