

FORT RUCKER, ALABAMA

RNAV (GPS) RWY 36

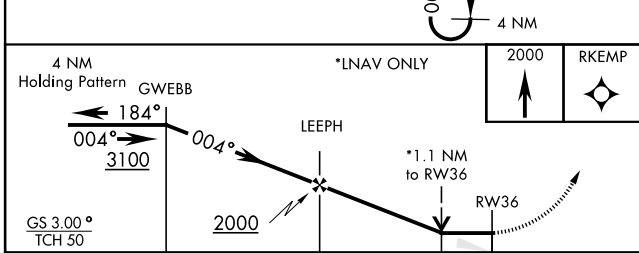
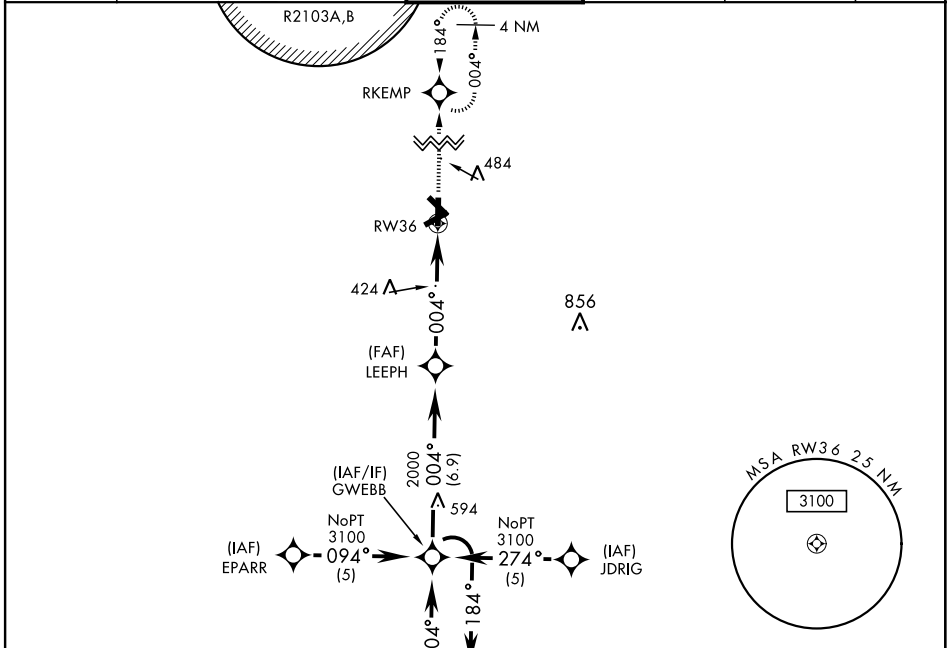
WAAS CH 63110 W36A	APCH CRS 004°	Rwy Idg TDZE 298 Arpt Elev 301	AL-577 [USA]	CAIRNS AAF (KOZR)
--	-------------------------	--	--------------	-------------------

RADAR required.

▼ DME/DME RNP-0.3 NA
For uncompensated BARO-VNAV systems, LNAV/VNAV NA below -15°C (5°F) or above 48°C (118°F).

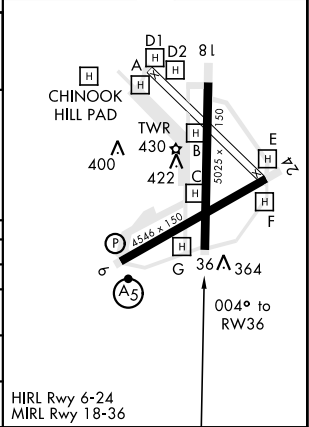
MISSED APPROACH: Climb to 2000 direct RKEMP and hold.

ATIS 111.2 316.15	CAIRNS APP CON 021°-120° 125.4 327.125 121°-219° 133.75 270.35 220°-340° 133.45 239.275 341°-020° 121.1 319.25	CAIRNS TOWER ★ 135.2 (CTAF) 248.55	GND CON 121.9 288.25	CLNC DEL 118.075 380.1	PAR
---------------------------------------	--	--	--	--	-----



ELEV 301	TDZE 298
----------	----------

CATEGORY	A	B	C	D
LPV DA		565-1	267	(300-1)
LNAV/VNAV DA		634-1¼	336	(400-1¼)
LNAV MDA		680-1	382	(400-1)
				680-1¼ 382 (400-1¼)
CIRCLING	740-1 439 (500-1)	780-1 479 (500-1)	800-1½ 499 (500-1½)	860-2 559 (600-2)



FORT RUCKER, ALABAMA 31° 16' N-85° 43' W CAIRNS AAF (KOZR)

Orig 15232

RNAV (GPS) RWY 36

SE-4, 10 SEP 2020 to 08 OCT 2020

SE-4, 10 SEP 2020 to 08 OCT 2020