

FORT RUCKER, ALABAMA

# RNAV (GPS) RWY 6

WAAS CH <b>50537</b> <b>W06A</b>	APCH CRS <b>064°</b>	Rwy Ildg TDZE Arprt Elev	<b>4546</b> <b>298</b> <b>301</b>
--	-------------------------	--------------------------------	---

AL-577 [USA]

CAIRNS AAF (KOZR)

DME/DME RNP-0.3 NA

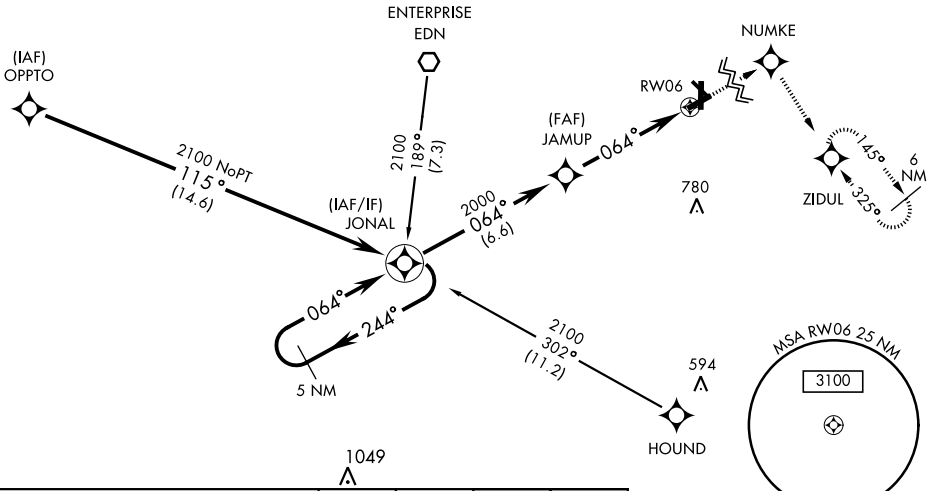
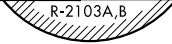
▼ \* When ALS inop, increase LNAV/VNAV visibility to RVR 40, increase LNAV CAT AB visibility to RVR 55 and CAT CD vis to 1 3/8 miles.



MISSED APPROACH: Climb to 2000 direct NUMKE then climbing right turn on track 148° to ZIDUL and hold.

CAIRNS APP CON	CAIRNS TOWER ★	GND CON	CLNC DEL	PAR
ATIS <b>111.2</b> <b>316.15</b>	021°-120° <b>125.4</b> <b>327.125</b> 121°-219° <b>133.75</b> <b>270.35</b> 220°-340° <b>133.45</b> <b>239.275</b> 341°-020° <b>121.1</b> <b>319.25</b>	★ <b>135.2</b> (CTAF) <b>248.55</b>	<b>121.9</b> <b>288.25</b>	<b>118.075</b> <b>380.1</b>

For uncompensated BARO-VNAV systems,  
LNAV/VNAV NA below -5°C (23°F) or above 54°C (130°F).

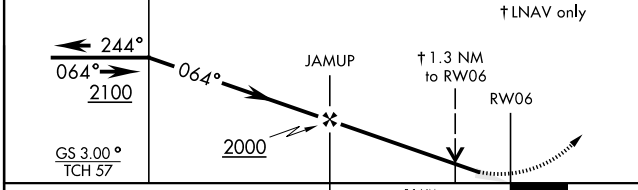


SE-4, 10 SEP 2020 to 08 OCT 2020

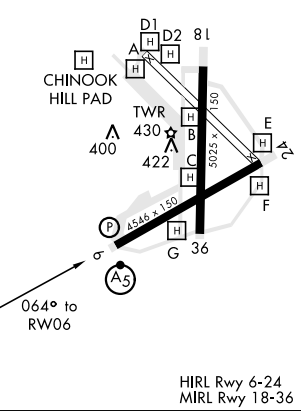
SE-4, 10 SEP 2020 to 08 OCT 2020



ELEV 301	TDZE 298
----------	----------



CATEGORY	A	B	C	D
LPV DA	498/24		200	(200-1/2)
LNAV/VNAV DA*	560/24		262	(300-1/2)
LNAV MDA*	760/24 462 (500-1/2)		760/50 462 (500-1)	
CIRCLING	760-1	780-1	860-1 1/2	900-2
	459 (500-1)	479 (500-1)	559 (600-1 1/2)	599 (600-2)



FORT RUCKER, ALABAMA

31° 16'N-85° 43'W

CAIRNS AAF (KOZR)

Amdt 1 25JUN15

# RNAV (GPS) RWY 6