

FORT RUCKER, ALABAMA

VOR RWY 6

CAIRNS AAF (KOZR)

VOR/DME OZR 111.2 Chan 49	APCH CRS 056°	Rwy Idg TDZE Arprt Elev 4546 298 301
---	-------------------------	--

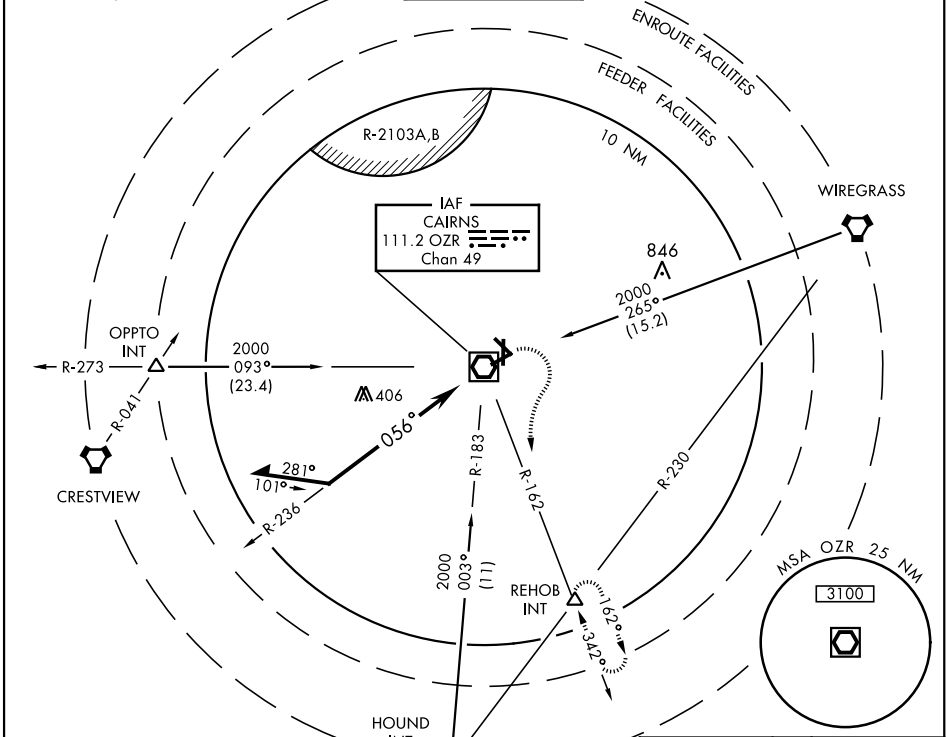
AL-577 [USA]

Visibility reduction by helicopters NA.
* When ALS inop, increase CAT AB RVR to 50, vis to 1 mile; CAT CD RVR to 60, vis to 1 1/4 miles.

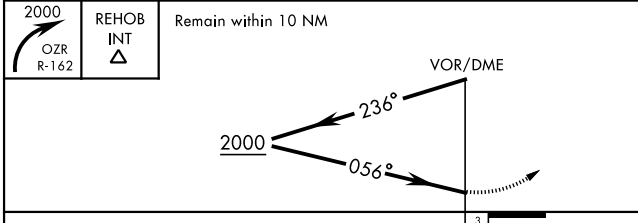


MISSED APPROACH: Climbing right turn to 2000 via OZR VOR/DME R-162 to REHOB INT and hold; or when directed by ATC, climbing left turn to 2000 heading 290° within 10 NM (RADAR required).

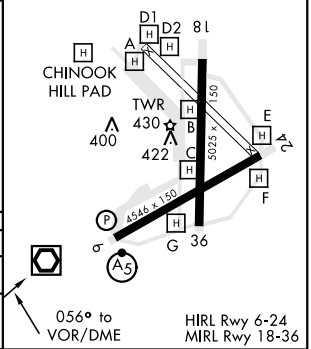
CAIRNS APP CON	CAIRNS TOWER *	GND CON	CLNC DEL	PAR	
ATIS 111.2 316.15	021°-120° 125.4 327.125 121°-219° 133.75 270.35 220°-340° 133.45 239.275 341°-020° 121.1 319.25	135.2 (CTAF) 248.55	121.9 288.25	118.075 380.1	



ELEV	301	TDZE	298
------	-----	------	-----



CATEGORY	A	B	C	D
S-6 *	740/40 442 (500-3/4)			
CIRCLING	740-1 439 (500-1)	780-1 479 (500-1)	860-1 1/2 559 (600-1 1/2)	900-2 599 (600-2)



FORT RUCKER, ALABAMA
Amdt 15B 13SEP18

31° 16'N-85°43'W

CAIRNS AAF (KOZR)

VOR RWY 6

SE-4, 10 SEP 2020 to 08 OCT 2020

SE-4, 10 SEP 2020 to 08 OCT 2020