

DEEPO ONE ARRIVAL (RNAV)

NE-1, 10 SEP 2020 to 08 OCT 2020

BOSTON APP CON ★
133.75 318.1
ATIS
127.5
NANTUCKET TOWER ★
118.3 (CTAF)

GROTON TRANSITION (GON.DEEPO1)
NORWICH TRANSITION (ORW.DEEPO1)
RIFLE TRANSITION (RIFLE.DEEPO1)

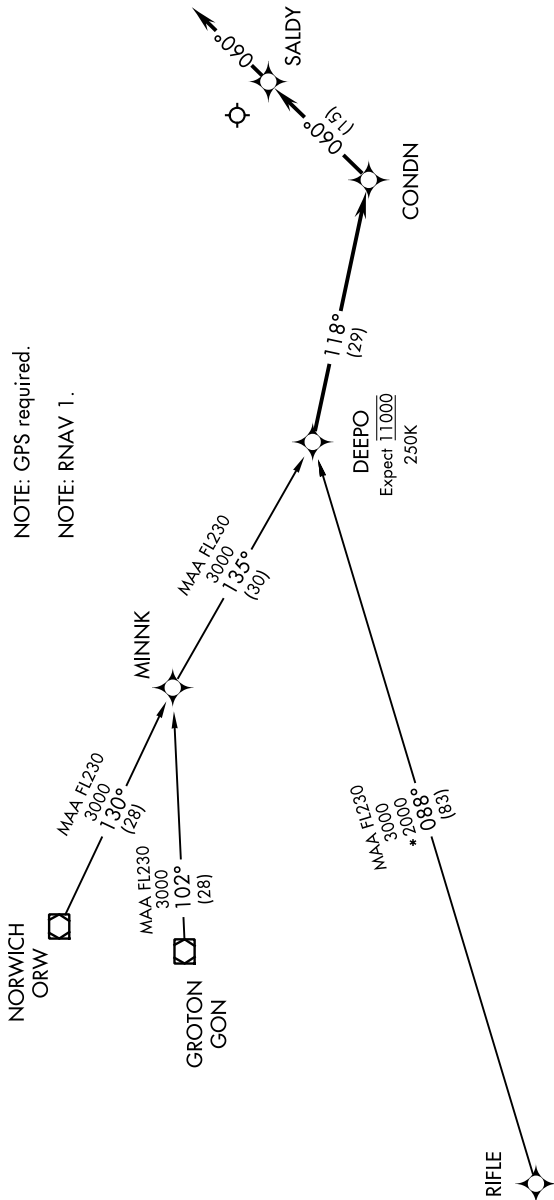
... From DEEPO, via 118° track to CONDN; thence via 060° track to SALDY. Depart SALDY heading 060°, expect radar vectors to final approach course.



NOTE: RADAR required.

NOTE: GPS required.

NOTE: RNAV 1.



NE-1, 10 SEP 2020 to 08 OCT 2020