

LOC/DME I-ACK 109.1 Chan 28	APP CRS 241°	Rwy Idg TDZE Apt Elev 6303 47 47
---	------------------------	--

ILS or LOC RWY 24

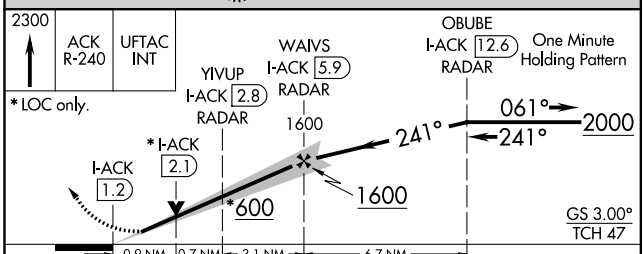
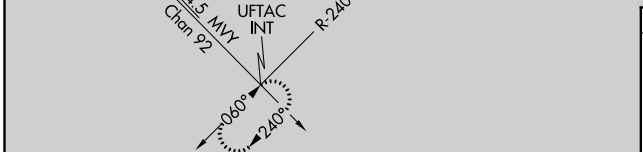
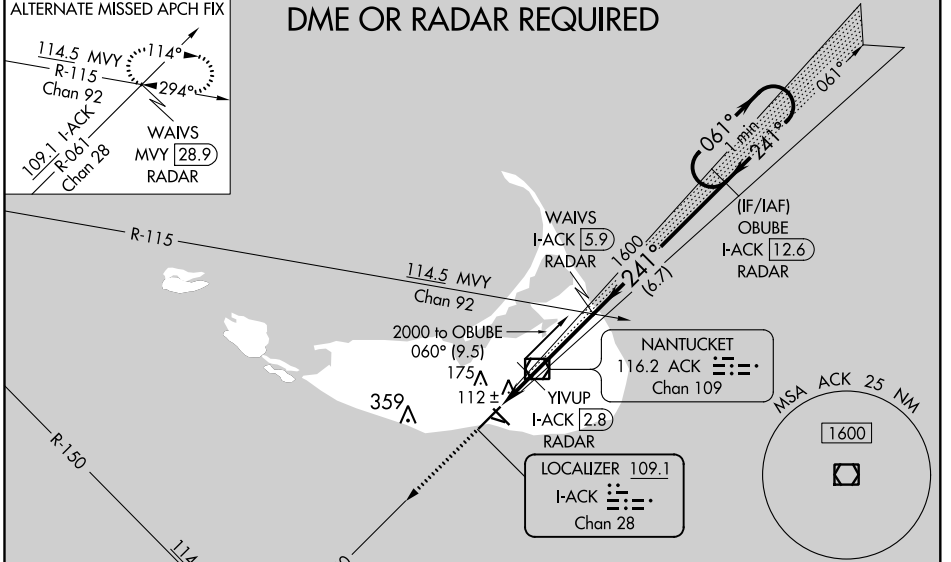
NANTUCKET MEMORIAL (ACK)

When local altimeter setting not received, use Hyannis altimeter setting and increase DA to 310 and all MDA 80 feet. Increase S-ILS 24, all Cats, visibility to RVR 2000, S-LOC 24 Cats C/D visibility to RVR 4000 and increase Circling Cats C/D ¼ SM. VDP NA when using Hyannis altimeter setting. For inop SSALR when using the Hyannis altimeter setting, increase S-ILS 24, all Cats, visibility to RVR 4500 and increase S-LOC 24 Cats C/D visibility to RVR 6000.

SSALR

MISSED APPROACH:
Climb to 2300 on
ACK VOR/DME R-240
to UFTAC INT and hold.

ATIS 127.5	BOSTON APP CON * 126.1 318.1	NANTUCKET TOWER * 118.3 (CTAF) 0	GND CON 132.5	CLNC DEL 119.375	UNICOM 122.95
----------------------	--	--	-------------------------	----------------------------	-------------------------



ELEV 47	D	TDZE 47
---------	----------	---------

TDZ/CL Rwy 24
HIRL Rwy 6-24
MIRL Rwy 15-33
REIL Rwys 15 and 33

FAF to MAP 4.7 NM					
Knots	60	90	120	150	180
Min:Sec	4:42	3:08	2:21	1:53	1:34

CATEGORY	A	B	C	D
S-ILS 24	247/18 200 (200-½)			
S-LOC 24	380/24	333 (400-½)	380/26	333 (400-½)
CIRCLING	480-1 433 (500-1)	500-1 453 (500-1)	720-2 673 (700-2)	720-2¼ 673 (700-2¼)

NE-1, 10 SEP 2020 to 08 OCT 2020

NE-1, 10 SEP 2020 to 08 OCT 2020