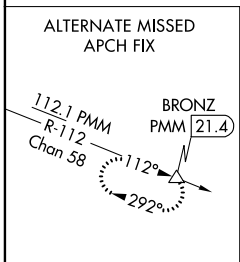
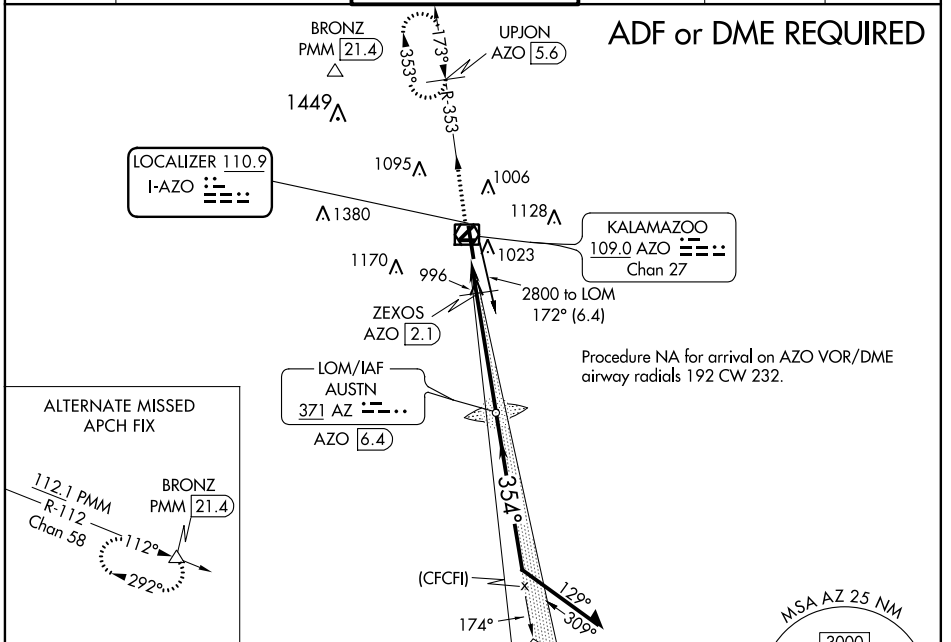


LOC I-AZO 110.9	APP CRS 354°	Rwy Idg TDZE Apt Elev	6502 868 874
---------------------------	------------------------	-----------------------------	---

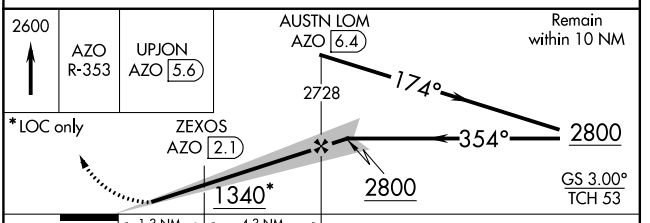
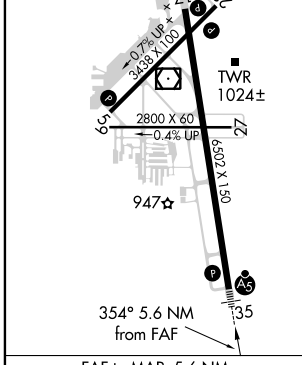
ILS or LOC RWY 35
KALAMAZOO/BATTLE CREEK INTL (AZO)

<p>ASR Night landing: Rwy 5, 9, 23, 27 NA. DME required. For inop MALSRL, increase S-LOC 35 Cats C and D visibility to 1½ mile. ** RVR 1800 authorized with use of FD or AP or HUD to DA.</p>	<p>MALSRL MISSED APPROACH: Climb to 2600 on AZO VOR/DME R-353 to UPJON/AZO VOR/DME 5.6 DME and hold.</p>
--	---

ATIS 127.25	GREAT LAKES APP CON * 121.2 239.25	KALAMAZOO TOWER * 118.3 (CTAF) 257.875	GND CON 121.9	CLNC DEL 121.75	UNICOM 122.95
-----------------------	--	---	-------------------------	---------------------------	-------------------------



ELEV 874	D	TDZE 868
REIL Rwys 5, 17 and 23		970Λ
MIRL Rwys 5-23 and 9-27		
HIRL Rwy 17-35		



CATEGORY	A	B	C	D
S-ILS 35		** 1068/24	200 (200-½)	
S-LOC 35	1260/24	392 (400-½)	1260/35	392 (400-¾)
C CIRCLING	1380-1	506 (600-1)	1480-1¾ 606 (700-1¾)	1480-2 606 (700-2)

EC-1, 10 SEP 2020 to 08 OCT 2020

EC-1, 10 SEP 2020 to 08 OCT 2020