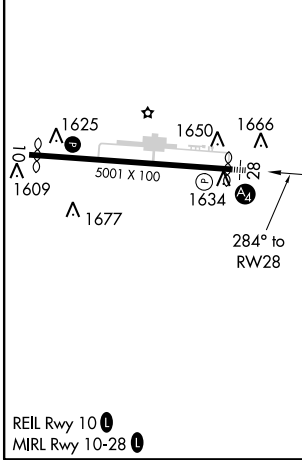
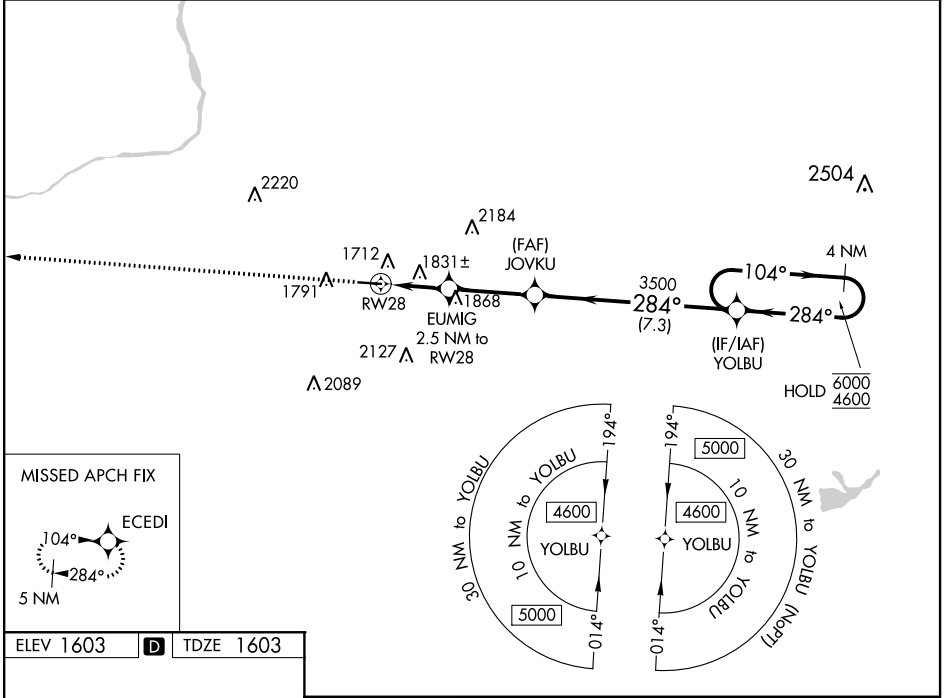


| | | | |
|--|------------------------|-----------------------------|---|
| WAAS CH 50140 W28A | APP CRS 284° | Rwy Idg TDZE Apt Elev | 4898 1603 1603 |
|--|------------------------|-----------------------------|---|

RNAV (GPS) RWY 28

HAZLETON RGNL (HZL)

| | | | |
|--|--|---------------------------|--|
| RNP APCH. | | MALS | MISSED APPROACH: Climb to 4400 direct ECEDI and hold. |
| <p>▼ Rwy 28 helicopter visibility reduction below ¾ SM NA. Inop table does not apply to LPV all Cats and LNAV Cats A/B. For uncompensated Baro-VNAV systems, LNAV/VNAV NA below -18°C or above 54°C.</p> | | | |
| AWOS-3 119.975 | WILKES-BARRE APP CON 126.3 256.7 | CLINC DEL 121.7 | UNICOM 123.0 (CTAF) 0 |



| | | | | |
|-------------------|------------------------|----------------------------|-------------------------|------------------------|
| ELEV 1603 | D | TDZE 1603 | | |
| 4400 | ECEDI | | | |
| *LNAV only. | EUMIG 2.5 NM to RWY 28 | JOVKU 3500 | | |
| *1.4 NM to RWY 28 | | YOLBU 4 NM Holding Pattern | | |
| 1.4 | 1.1 | 3.1 NM | | |
| 2460* | | 3500 | | |
| | | 7.3 NM | | |
| | | 104° → 6000 | | |
| | | ← 284° 4600 | | |
| | | GP 3.17° TCH 40 | | |
| CATEGORY | A | B | C | D |
| LPV DA | 1978-1 | | 375 (400-1) | |
| LNAV/VNAV DA | 2143-1¼ | | 540 (600-1¼) | |
| LNAV MDA | 2100-1 | 497 (500-1) | 2100-1½ | 497 (500-1½) |
| C CIRCLING | 2140-1 537 (600-1) | 2400-1 797 (800-1) | 2480-2½ 877 (900-2½) | 2520-3 917 (1000-3) |

NE-4, 10 SEP 2020 to 08 OCT 2020

NE-4, 10 SEP 2020 to 08 OCT 2020