

JACKSONVILLE, NORTH CAROLINA

RNAV (GPS) RWY 19

AL-732 [USN] NEW RIVER MCAS (MC CUTCHEON FLD)(KNCA)

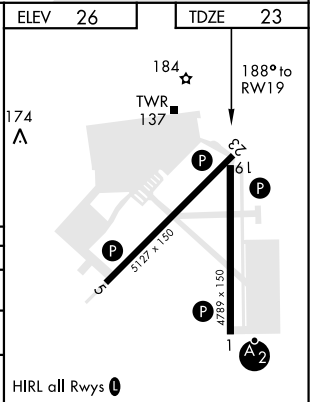
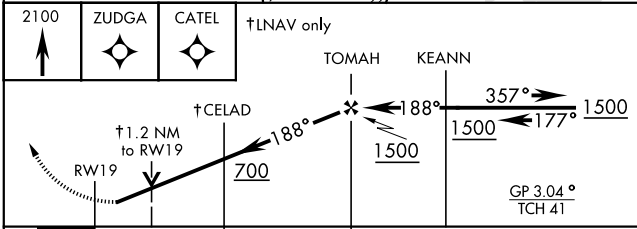
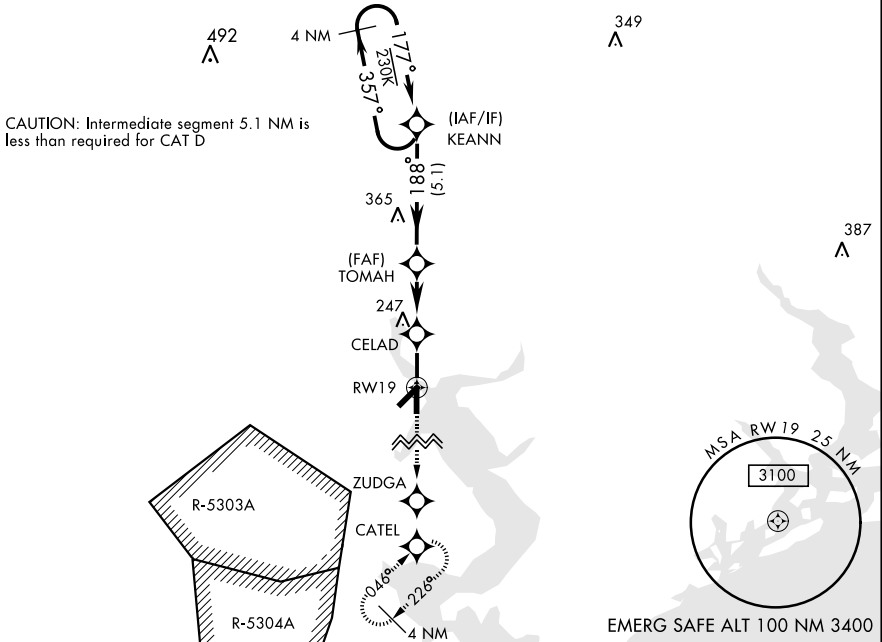
APCH CRS	Rwy Idg	4789
188°	TDZE	23
	Arpt Elev	26

Baro VNAV NA below -1.5°C (5°F) and above 42°C (108°F).
DME/DME RNP-0.3 NA.

MISSED APPROACH: Climb to 2100 direct ZUDGA, direct CATEL and hold.

ATIS ★ 288.325	CHERRY POINT APP CON 119.35 377.175	NEW RIVER TOWER★ 120.00★ 360.2	GND CON 121.8 254.275	CLNC DEL 269.25	ASR/PAR
--------------------------	---	--	---------------------------------	---------------------------	---------

WCH for Group 4 of 16 ft is less than minimum 20 ft.



CATEGORY	A	B	C	D
LNAV/VNAV DA	432-1 3/8		409 (500-1 1/8)	
LNAV MDA	440-1	417 (500-1)	440-1 1/8	417 (500-1 1/8)
CIRCLING	500-1	474 (500-1)	500-1 1/2 474 (500-1 1/2)	580-2 554 (600-2)

JACKSONVILLE, NORTH CAROLINA

34° 43' N-77° 26' W

NEW RIVER MCAS (MC CUTCHEON FLD)(KNCA)

Amdt 2 22JUN17

RNAV (GPS) RWY 19

SE-2, 10 SEP 2020 to 08 OCT 2020

SE-2, 10 SEP 2020 to 08 OCT 2020