

JACKSONVILLE, NORTH CAROLINA

# RNAV (GPS) RWY 23

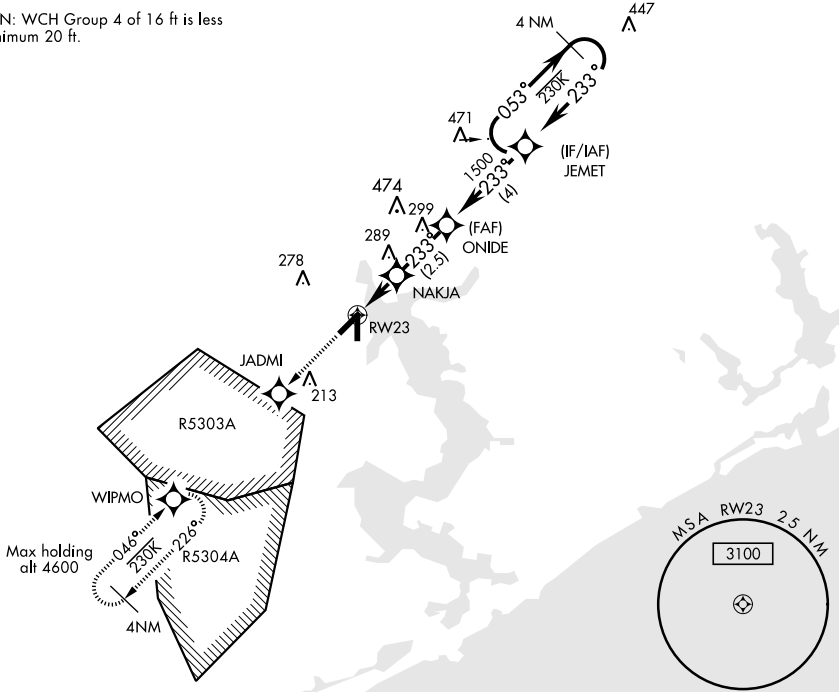
WAAS Chan <b>80122</b> <b>W23A</b>	APCH CRS <b>233°</b>	Rwy ldg <b>5127</b> TDZE <b>24</b> Arprt Elev <b>26</b>	AL-732 [USN]	NEW RIVER MCAS (MC CUTCHEON FLD) (KNCA)
--	-------------------------	---	--------------	---

▼ For uncompensated Baro-VNAV systems, LNAV/VNAV NA below -1.5°C (5°F) or above 54°C (130°F). DME/DME RNP-0.3 NA.
 

 MISSED APPROACH: Climb to 1600 direct JADMI direct WIPMO and hold.

ATIS ★ <b>288.325</b>	CHERRY POINT APP CON <b>119.35 377.175</b>	NEW RIVER TOWER ★ <b>120.0 0 ★ 360.2</b>	GND CON <b>121.8 254.275</b>	CLNC DEL <b>269.25</b>	ASR/ PAR
--------------------------	---	---	---------------------------------	---------------------------	----------

CAUTION: WCH Group 4 of 16 ft is less than minimum 20 ft.



EMERG SAFE ALT 100 NM 3400

1600 ↑	JADMI 	WIPMO 		ELEV 26	TDZE 24
†LNAV only			ONIDE      JEMET		
			053° → 1500 ← 233°		
			GP 3.05° TCH 37		
CATEGORY	A	B	C	D	
LPV DA	274-7/8		250	(300-7/8)	
LNAV/VNAV DA	313-1 289 (300-1)	324-1 300 (300-1)	332-1 308 (400-1)	343-1 1/8 319 (400-1 1/8)	
LNAV MDA	440-1    416 (500-1)	440-1 1/8    416 (500-1 1/8)			
CIRCLING	500-1    474 (500-1)	500-1 1/2    474 (500-1 1/2)		580-2 554 (600-2)	

JACKSONVILLE, NORTH CAROLINA

34°43'N-77°26'W

NEW RIVER MCAS (MC CUTCHEON FLD) (KNCA)

Amdt 2 22JUN17

# RNAV (GPS) RWY 23

SE-2, 10 SEP 2020 to 08 OCT 2020

SE-2, 10 SEP 2020 to 08 OCT 2020