

JACKSONVILLE, NORTH CAROLINA

RNAV (GPS) RWY 5

WAAS Chan 77243 W05A	APCH CRS 053°	Rwy Idg TDZE Arprt Elev	5127 26 26
--	-------------------------	-------------------------------	---------------------------------------

AL-732 [USN]

NEW RIVER MCAS (MC CUTCHEON FLD) (KNCA)

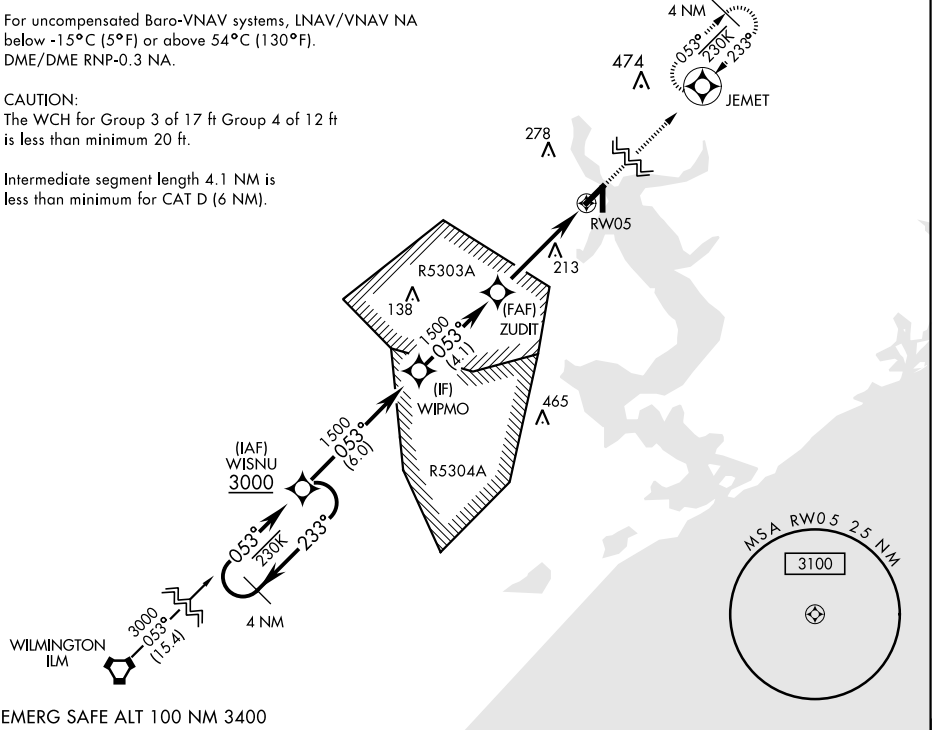
MISSED APPROACH: Climbing to 1500 direct JEMET and hold.

ATIS ★ 288.325	CHERRY POINT APP CON 119.35 377.175	NEW RIVER TOWER ★ 120.0 0 ★ 360.2	GND CON 121.8 254.275	CLNC DEL 269.25	ASR/ PAR
--------------------------	---	---	---------------------------------	---------------------------	-------------

For uncompensated Baro-VNAV systems, LNAV/VNAV NA below -15°C (5°F) or above 54°C (130°F). DME/DME RNP-0.3 NA.

CAUTION:
The WCH for Group 3 of 17 ft Group 4 of 12 ft is less than minimum 20 ft.

Intermediate segment length 4.1 NM is less than minimum for CAT D (6 NM).



EMERG SAFE ALT 100 NM 3400

WISNU		TCH (37) is not coincident with VGSI TCH (47)		1500	JEMET	ELEV 26	TDZE 26
3000		233°		1500	1500	174	
053°		WIPMO		ZUDIT	053°		
GP 3.04°		1500		1500	4.5 NM	184 TWR 137 5127 x 1500 2789 x 1500 1 2	
CATEGORY	A	B	C	D			
LPV DA		226- $\frac{3}{4}$	200	(200- $\frac{3}{4}$)			
LNAV/VNAV DA	305- $\frac{7}{8}$ 279 (300- $\frac{7}{8}$)	316-1 290 (300-1)	324-1 298 (300-1)	335-1 309 (400-1)			
LNAV MDA	440-1	414 (500-1)	440-1 $\frac{1}{8}$	414 (500- $\frac{1}{8}$)			
CIRCLING	500-1	474 (500-1)	500- $\frac{1}{2}$ 474 (500- $\frac{1}{2}$)	580-2 554 (600-2)			
HIRL all Rwy 0							

JACKSONVILLE, NORTH CAROLINA

34°43'N-77°26'W

NEW RIVER MCAS (MC CUTCHEON FLD) (KNCA)

Amtd 5 25APR19

RNAV (GPS) RWY 5

SE-2, 10 SEP 2020 to 08 OCT 2020

SE-2, 10 SEP 2020 to 08 OCT 2020