

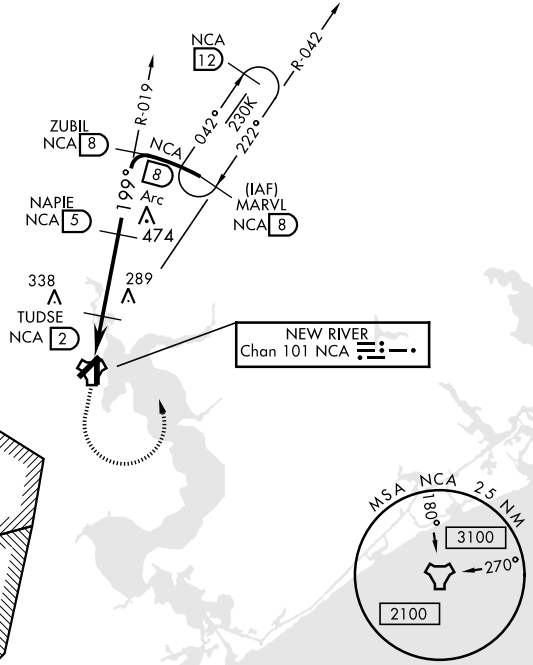
# TACAN RWY 19

TACAN NCA Chan <b>101</b>	APCH CRS <b>199°</b>	Rwy ldg TDZE Arpt Elev <b>4789 23 26</b>
---------------------------	----------------------	--

AL-732 [USN] NEW RIVER MCAS (MC CUTCHEON FLD)(KNCA)

MISSED APPROACH: Climbing left turn to 1500 intercept NCA R-042 direct MARVL (R-042/8 DME) and hold.					
ATIS ★ <b>288.325</b>	CHERRY POINT APP CON <b>119.35 377.175</b>	NEW RIVER TOWER★ <b>120.00★ 360.2</b>	GND CON <b>121.8 254.275</b>	CLNC DEL <b>269.25</b>	ASR/PAR

CAUTION: Inmed seg len 3 NM.

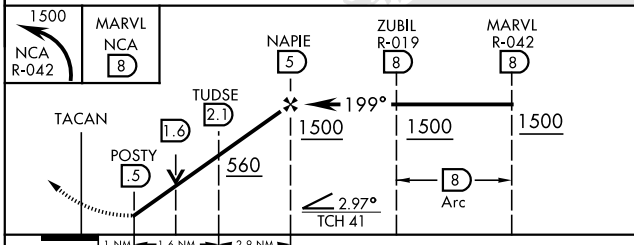


SE-2, 10 SEP 2020 to 08 OCT 2020

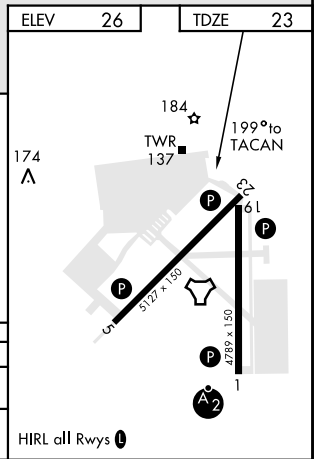
SE-2, 10 SEP 2020 to 08 OCT 2020

## RADAR REQUIRED

EMERG SAFE ALT 100 NM 3400



CATEGORY	A		B	C		D
S-19	440-1	417	(500-1)	440-1 1/8	417	(500-1 1/8)
CIRCLING	500-1	474	(500-1)	500-1 1/2	580-2	(500-1 1/2) 554 (600-2)



# TACAN RWY 19