

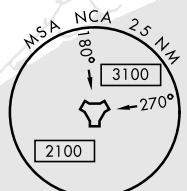
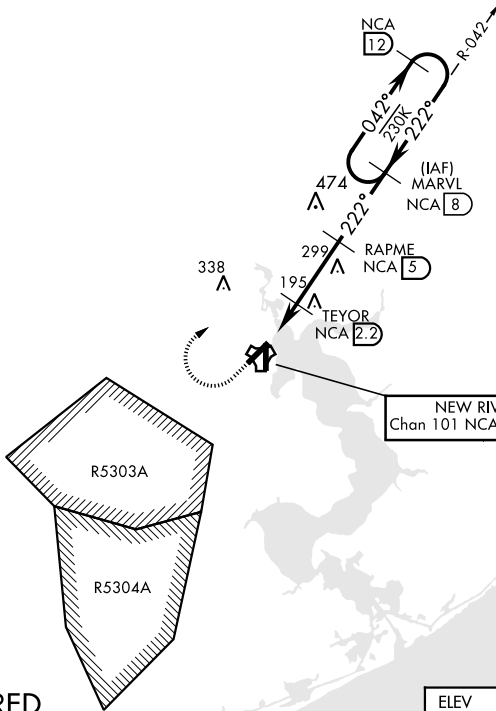
TACAN RWY 23

TACAN NCA Chan 101	APCH CRS 222°	Rwy ldg TDZE 5127 Arprt Elev 24 26
---------------------------	----------------------	---

AL-732 [USN] NEW RIVER MCAS (MC CUTCHEON FLD)(KNCA)

MISSED APPROACH: Climb to 600 then climbing right turn to 1500, intercept NCA TACAN R-042 to MARVL and hold.					
ATIS ★ 288.325	CHERRY POINT APP CON 119.35 377.175	NEW RIVER TOWER★ 120.00★ 360.2	GND CON 121.8 254.275	CLNC DEL 269.25	ASR/PAR

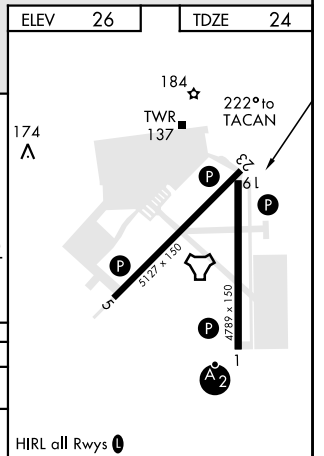
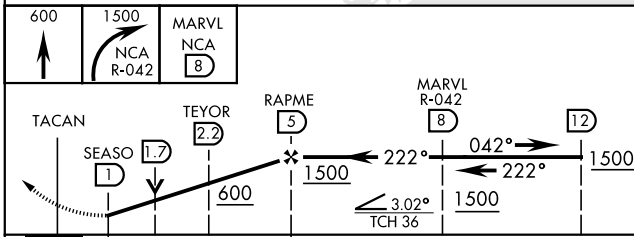
CAUTION: Intmed segment length 3 NM.



RADAR REQUIRED

For Missed Approach

EMERG SAFE ALT 100 NM 3400



CATEGORY	A		B		C		D	
S-23	440-1	416	(500-1)		440-1 1/8	416	(500-1 1/8)	
CIRCLING	500-1	474	(500-1)		500-1 1/2	580-2	(500-1 1/2) 554 (600-2)	

TACAN RWY 23

SE-2, 10 SEP 2020 to 08 OCT 2020

SE-2, 10 SEP 2020 to 08 OCT 2020