

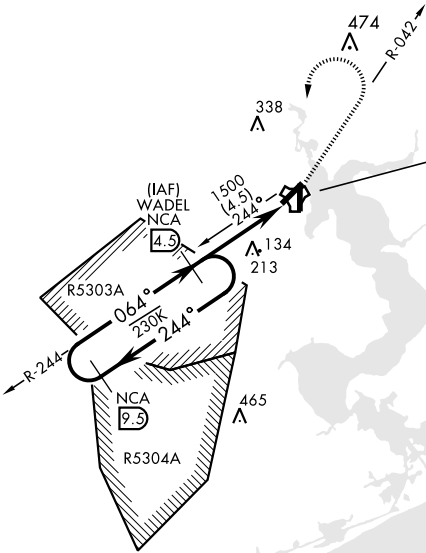
TACAN RWY 5

TACAN NCA Chan 101	APCH CRS 064°	Rwy Idg 5127 TDZE 26 Arprt Elev 26
-----------------------	------------------	---

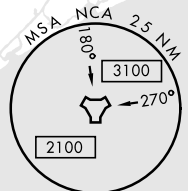
AL-732 [USN] NEW RIVER MCAS (MC CUTCHEON FLD)(KNCA)

▽ MISSED APPROACH: Climbing left turn to 1500 via NCA R-042. Then left turn direct NCA TACAN, then via NCA R-244 direct WADEL and hold.

ATIS ★ 288.325	CHERRY POINT APP CON 119.35 377.175	NEW RIVER TOWER★ 120.00★ 360.2	GND CON 121.8 254.275	CLNC DEL 269.25	ASR/PAR
-------------------	--	-----------------------------------	--------------------------	--------------------	---------



NEW RIVER
Chan 101 NCA



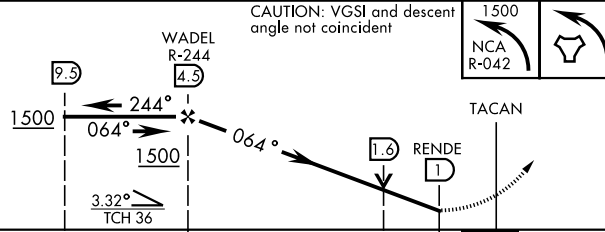
SE-2, 10 SEP 2020 to 08 OCT 2020

SE-2, 10 SEP 2020 to 08 OCT 2020

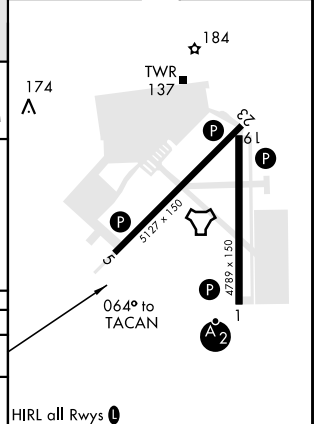
RADAR REQUIRED

EMERG SAFE ALT 100 NM 3400

CAUTION: VGS1 and descent angle not coincident



ELEV	26	TDZE	26
------	----	------	----



CATEGORY	A		B		C		D	
S-5	440-1	414	(500-1)		440-1½	414	(500-1½)	
CIRCLING	500-1	474	(500-1)		500-1½	474	(500-1½)	580-2
								554 (600-2)

HIRL all Rwys

TACAN RWY 5