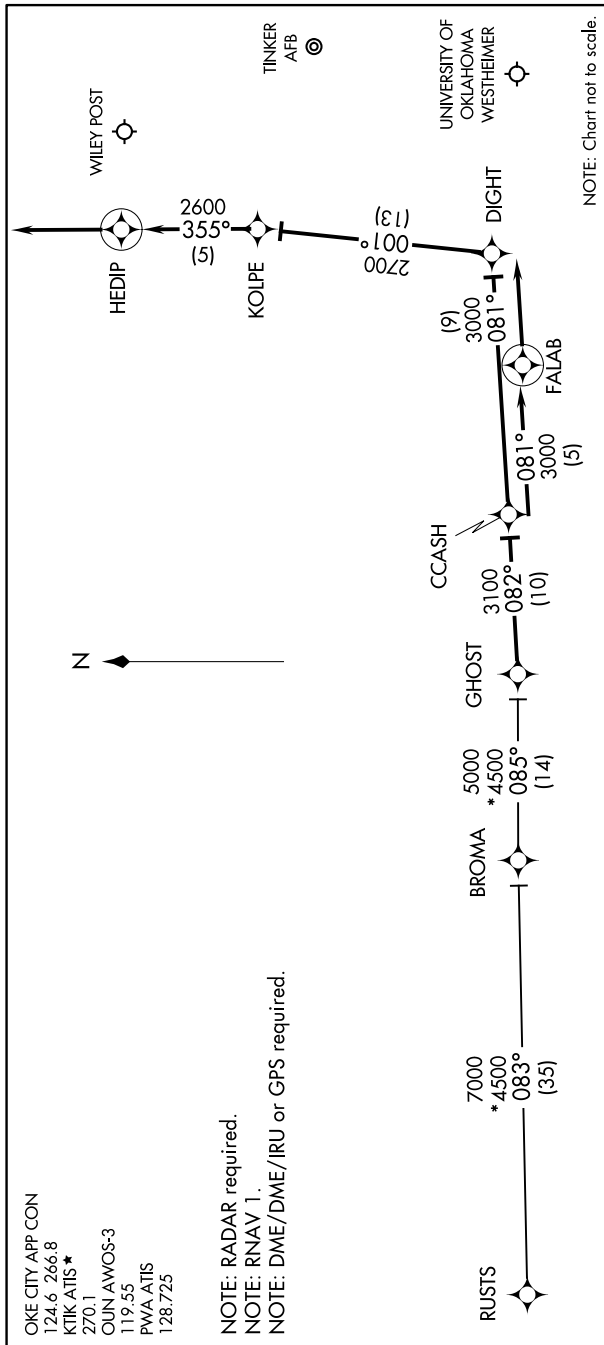


CCASH ONE ARRIVAL (RNAV)

OKLAHOMA CITY, OKLAHOMA

SC-1, 10 SEP 2020 to 08 OCT 2020



NOTE: Chart not to scale.

ARRIVAL ROUTE DESCRIPTION

BROMA TRANSITION (BROMA.CCASH1):
RUSTS TRANSITION (RUSTS.CCASH1):

From GHOST on track 082° to CCASH.

LANDING OUN/KTIK: From CCASH on track 081° to FALAB, then on track 081°. Expect radar vectors to final approach course.

LANDING PWA RW17L: From CCASH on track 081° to DIGHT, then on track 001° to KOLPE, then on track 355° to HEDIP, then on track 355°. Expect radar vectors to final approach course.

LANDING PWA RW35R: From CCASH on track 081° to FALAB, then on track 081°. Expect radar vectors to final approach course.

CCASH ONE ARRIVAL (RNAV)

OKLAHOMA CITY, OKLAHOMA

SC-1, 10 SEP 2020 to 08 OCT 2020