

WAAS CH <b>90503</b> <b>W19A</b>	APP CRS <b>190°</b>	Rwy Idg TDZE Apt Elev	<b>6000</b> <b>20</b> <b>20</b>
--	------------------------	-----------------------------	---------------------------------------

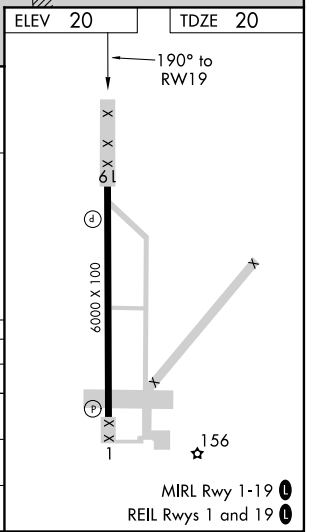
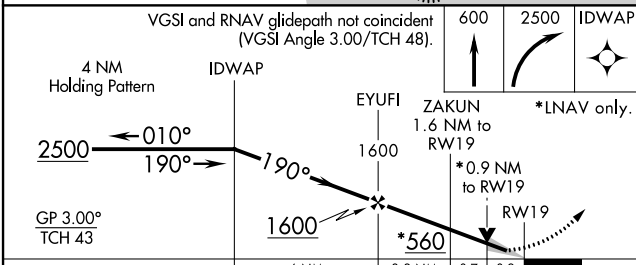
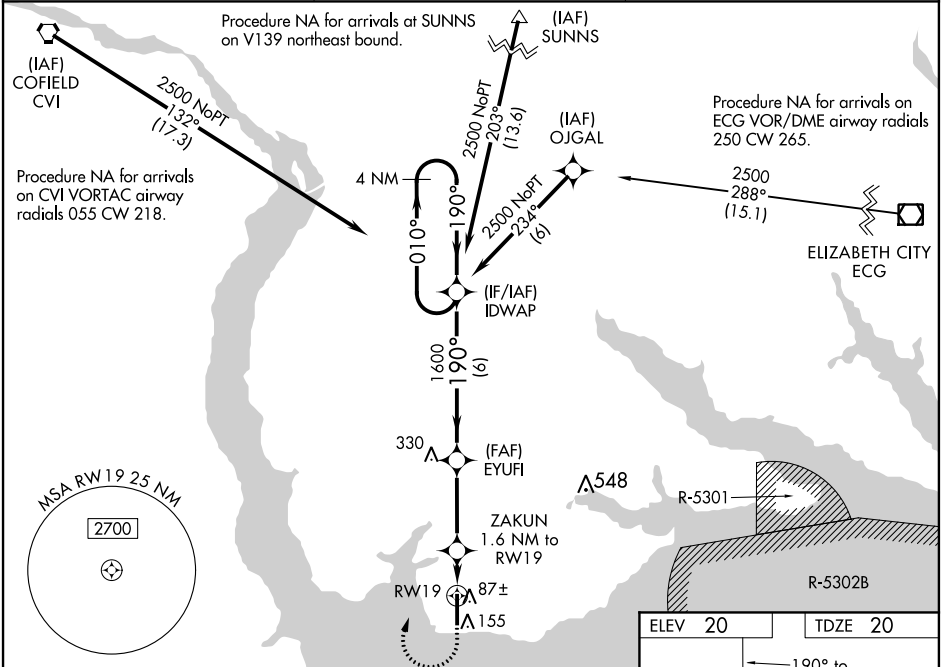
# RNAV (GPS) RWY 19

NORTHEASTERN RGNL (E/D/E)

**⚠** Baro-VNAV NA when using Elizabeth City altimeter setting. For uncompensated Baro-VNAV systems, LNAV/VNAV NA below -15°C (5°F) or above 43°C (109°F). When local altimeter setting not received, use Elizabeth City altimeter setting and increase LPV DA to 275 LNAV/VNAV DA to 325 and all MDA 60 feet, increase LPV all Cats and LNAV Cat C/D visibility 1/8 mile and LNAV/VNAV visibility all Cats 1/4 mile. DME/DME RNP-0.3 NA. VDP NA when using Elizabeth City altimeter setting.

**MISSED APPROACH:**  
Climb to 600 then right turn to 2500 direct IDWAP and hold.

AWOS-3 <b>118.275</b>	WASHINGTON CENTER <b>123.85 279.65</b>	UNICOM <b>123.0 (CTAF) 0</b>
--------------------------	---	---------------------------------



CATEGORY	A	B	C	D
LPV DA		220-3/4	200 (200-3/4)	
LNAV/VNAV DA		270-3/4	250 (300-3/4)	
LNAV MDA		340-1	320 (400-1)	
CIRCLING	520-1	500 (500-1)	520-1 1/2 500 (500-1 1/2)	580-2 560 (600-2)

SE-2, 10 SEP 2020 to 08 OCT 2020

SE-2, 10 SEP 2020 to 08 OCT 2020