

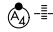
WAAS CH 63236 W10B	APP CRS 096°	Rwy Idg TDZE Apt Elev	8000 14 65
--	------------------------	-----------------------------	---------------------------------------

RNAV (GPS) RWY 10R

FORT LAUDERDALE/HOLLYWOOD INTL (FLL)

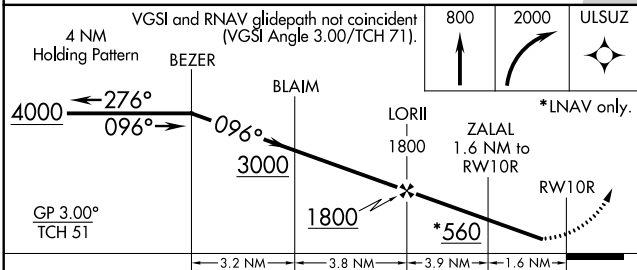
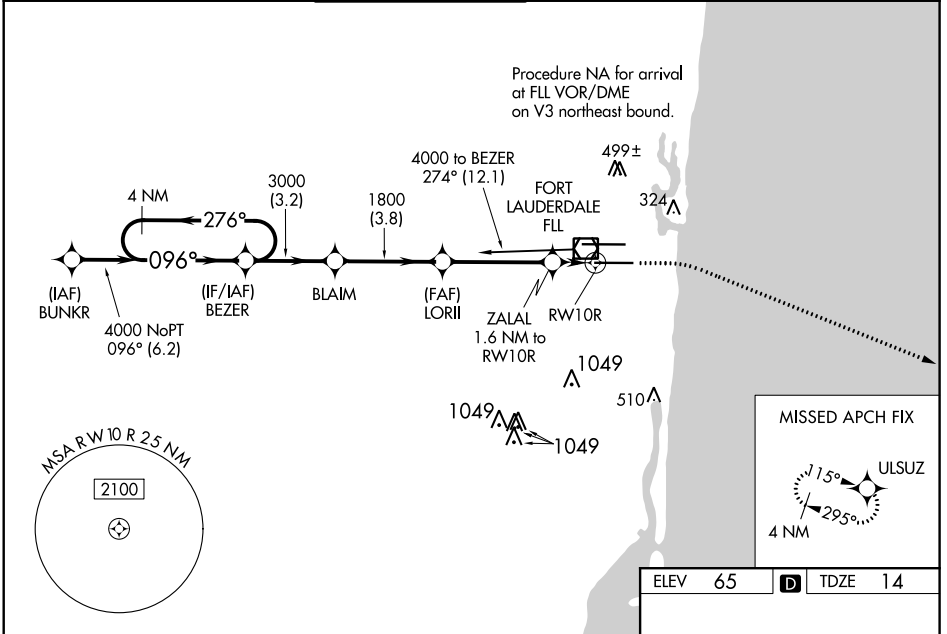
RNP APCH.

⚠ For uncompensated Baro-VNAV systems, LNAV/VNAV NA below 6°C (43°F) or above 54°C (130°F). Simultaneous approach authorized. Use of FD or AP required during simultaneous operations. Rwy 10R helicopter visibility reduction below RVR 4000 NA. For inop ALS, increase LNAV/VNAV Cat D and LNAV Cats C and D visibility to 1 3/8 SM. Inop Table does not apply to LPV all Cats. LNAV procedure NA during simultaneous operations.

MALSF 

MISSED APPROACH: Climb to 800 then climbing right turn to 2000 direct ULSUZ and hold.

D-ATIS 135.0	MIAMI APP CON 133.775 285.6	FORT LAUDERDALE TOWER 119.3 257.8	GND CON 121.4	CLNC DEL 128.4	CPDLC
------------------------	---------------------------------------	--	-------------------------	--------------------------	-------



ELEV 65	D TDZE 14
---------	------------------

9000 X 150

9000 X 150

0.4% UP

1.0% DOWN

096° to RWY10R

HIRL Rwy 10L-28R and 10R-28L

CATEGORY	A	B	C	D
LPV DA		264/40	250 (200-3/4)	
LNAV/VNAV DA		419/60	405 (400-1 1/4)	
LNAV MDA	460/40	446 (400-3/4)	460/55	446 (400-1)
C CIRCLING	680-1	615 (700-1)	800-2 735 (800-2)	800-2 1/4 735 (800-2 1/4)

SE-3, 10 SEP 2020 to 08 OCT 2020

SE-3, 10 SEP 2020 to 08 OCT 2020