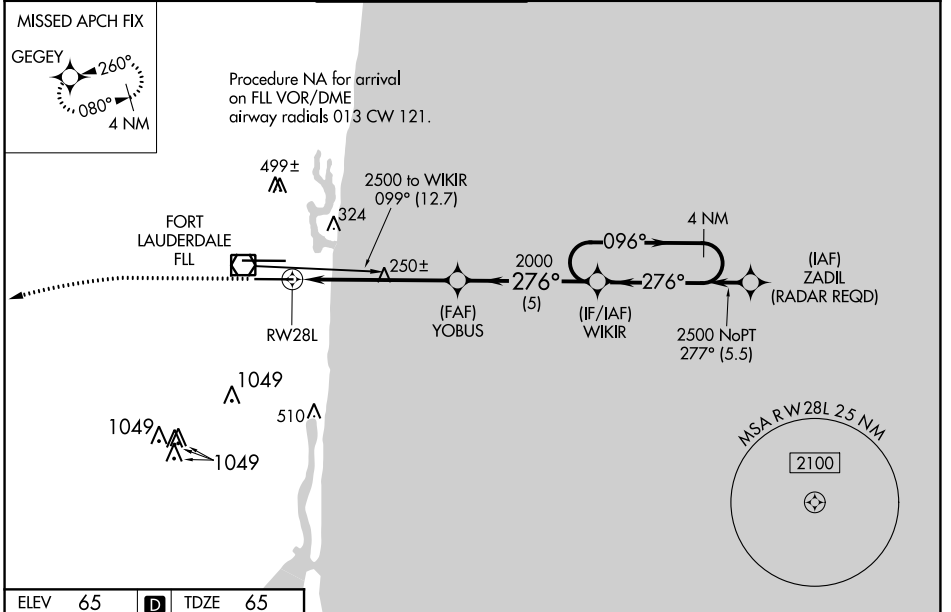


WAAS CH <b>58336</b> <b>W28B</b>	APP CRS <b>276°</b>	Rwy ldg TDZE Apt Elev	<b>8000</b> <b>65</b> <b>65</b>
--	------------------------	-----------------------------	---------------------------------------

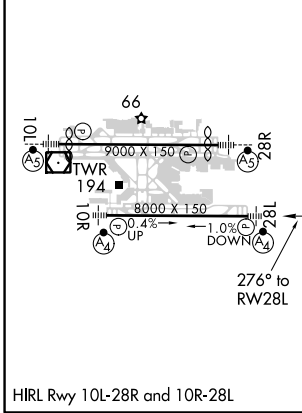
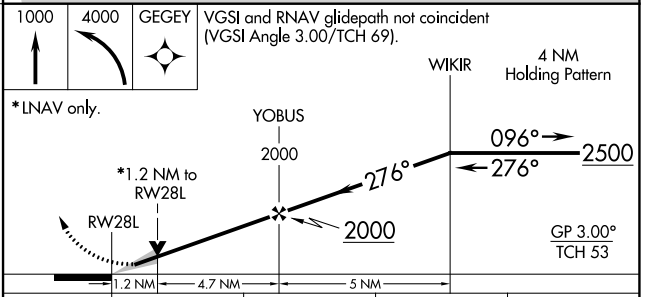
# RNAV (GPS) RWY 28L

FORT LAUDERDALE/HOLLYWOOD INTL (FLL)

RNP APCH.		<p>▼ For uncompensated Baro-VNAV systems, LNAV/VNAV NA below 6°C (43°F) or above 54°C (130°F). Simultaneous approach authorized. LNAV procedure NA during simultaneous operations. Use of FD or AP required during simultaneous operations. For inop ALS increase LNAV Cats C/D visibility to 1¼ SM. Inop table does not apply to LPV all Cats.</p>		<p>MALSF</p>		<p>MISSED APPROACH: Climb to 1000 then climbing left turn to 4000 direct GEGEY and hold, continue climb-in-hold to 4000.</p>	
D-ATIS <b>135.0</b>	MIAMI APP CON <b>133.775 285.6</b>	FORT LAUDERDALE TOWER <b>119.3 257.8</b>	GND CON <b>121.4</b>	CLNC DEL <b>128.4</b>	CPDLC		



ELEV 65	<b>D</b>	TDZE 65
---------	----------	---------



CATEGORY	A	B	C	D
LPV DA		265/40	200 (200-¾)	
LNAV/VNAV DA		389/40	324 (400-¾)	
LNAV MDA	500/40	435 (500-¾)	500/50	435 (500-1)
<b>C</b> CIRCLING	680-1	615 (700-1)	800-2 735 (700-2)	800-2¼ 735 (800-2¼)

SE-3, 10 SEP 2020 to 08 OCT 2020

SE-3, 10 SEP 2020 to 08 OCT 2020