

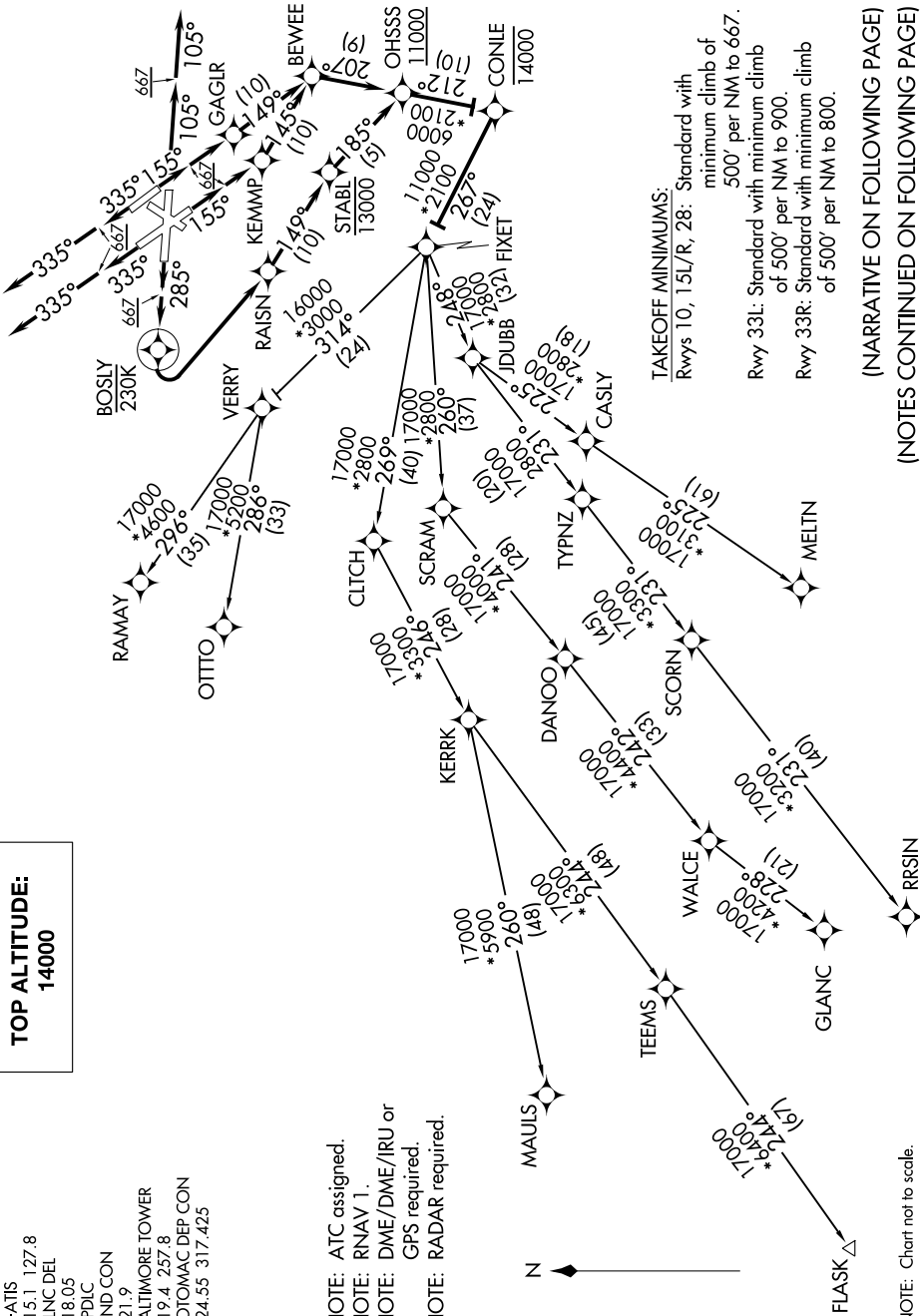
# FIXET THREE DEPARTURE (RNAV)

NE-3, 10 SEP 2020 to 08 OCT 2020

**TOP ALTITUDE:**  
**14000**

D-AIIS  
115.1 127.8  
CLNC DEL  
118.05  
CPDIC  
GND CON  
121.9  
BALTIMORE TOWER  
119.4 257.8  
POTOMAC DEP CON  
124.55 317.425

NOTE: ATC assigned.  
NOTE: RNAV 1.  
NOTE: DME/DME/IRU or  
GPS required.  
NOTE: RADAR required.



TAKEOFF MINIMUMS:

Rwys 10, 15L/R, 28: Standard with minimum climb of 500' per NM to 667.  
Rwy 33L: Standard with minimum climb of 500' per NM to 900.  
Rwy 33R: Standard with minimum climb of 500' per NM to 800.

(NARRATIVE ON FOLLOWING PAGE)  
(NOTES CONTINUED ON FOLLOWING PAGE)

NE-3, 10 SEP 2020 to 08 OCT 2020

NOTE: Chart not to scale.