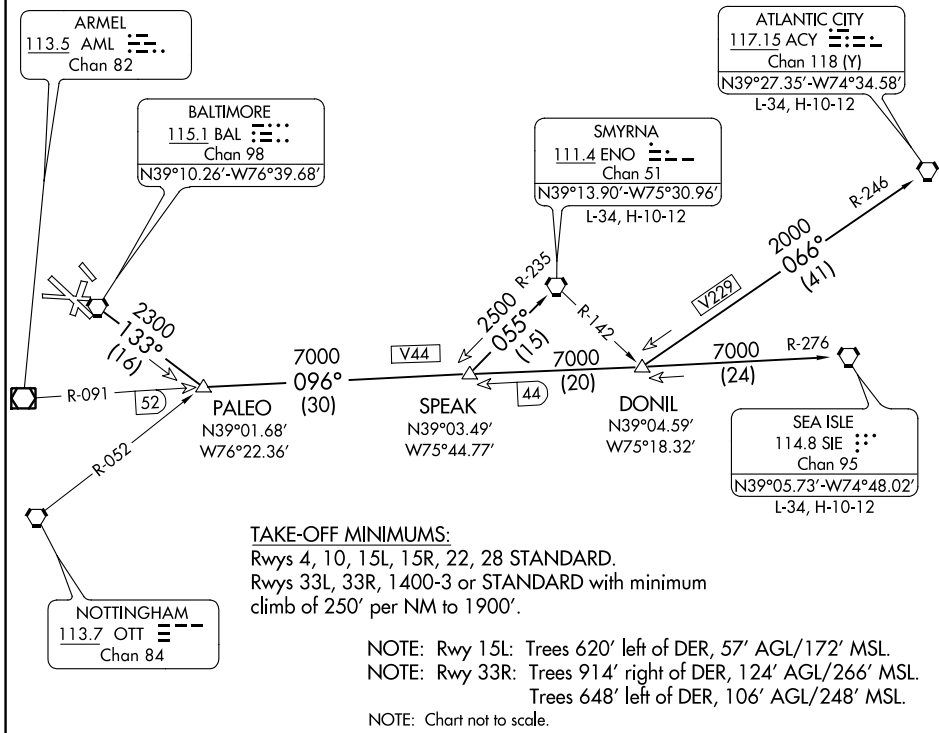


(PALEO3.PALEO) 20086  
**PALEO THREE DEPARTURE**

BALTIMORE/  
 WASHINGTON INTL THURGOOD MARSHALL (BWI)  
 AL-804 (FAA) BALTIMORE, MARYLAND

D-ATIS 115.1 127.8  
 CLNC DEL 118.05  
 GND CON 121.9  
 BALTIMORE TOWER  
 119.4 257.8  
 POTOMAC DEP CON  
 124.55  
 CPDLC



NE-3, 10 SEP 2020 to 08 OCT 2020

NE-3, 10 SEP 2020 to 08 OCT 2020

**DEPARTURE ROUTE DESCRIPTION**

**TAKE-OFF RWY 28:**

**JETS:** Fly runway heading until 3 DME, then turn left heading 150°. Thence . . .

**PROPS:** Fly runway heading. Thence . . .

**TAKE-OFF ALL OTHER RUNWAYS:** Fly runway heading. Thence . . .

. . . . For vectors to transition or assigned route, expect clearance to filed altitude ten minutes after departure.

**ATLANTIC CITY TRANSITION (PALEO3.ACY):** From over BAL VORTAC via BAL R-133 to PALEO INT, then via SIE VORTAC R-276 to DONIL INT, then via ACY VORTAC R-246 to ACY VORTAC.

**SEA ISLE TRANSITION (PALEO3.SIE):** From over BAL VORTAC via BAL R-133 to PALEO INT, then via SIE VORTAC R-276 to SIE VORTAC.

**SMYRNA TRANSITION (PALEO3.ENO):** From over BAL VORTAC via BAL R-133 to PALEO INT, then via SIE VORTAC R-276 to SPEAK INT, then via ENO VORTAC R-235 to ENO VORTAC.