

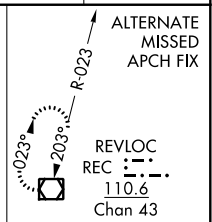
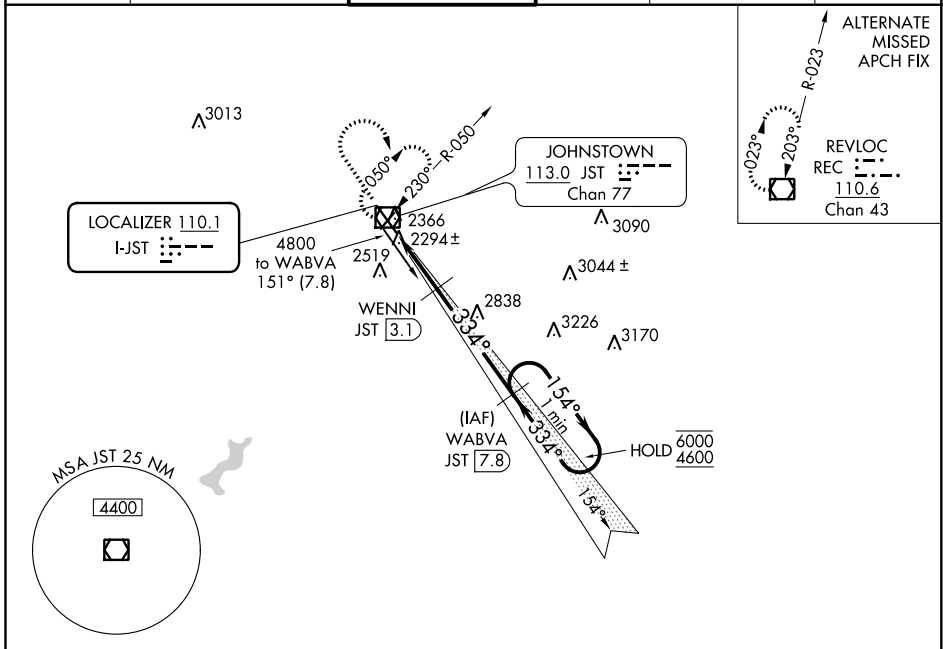
LOC I-JST 110.1	APP CRS 334°	Rwy Idg TDZE Apt Elev	7003 2281 2284
---------------------------	------------------------	-----------------------------	---

ILS or LOC RWY 33

JOHN MURTHA JOHNSTOWN-CAMBRIA COUNTY (JST)

DME required. ▼ Glide slope unusable beyond 5 degrees left of course. ▲ For inop ALS, increase S-LOC 33 Cat C/D visibility to ½ SM.	MALSR MISSED APPROACH: Climb to 3700 then climbing right turn to 4600 direct JST VOR/DME and hold, continue climb-in-hold to 4600.
---	---

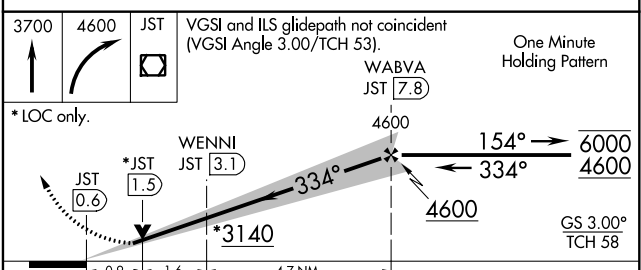
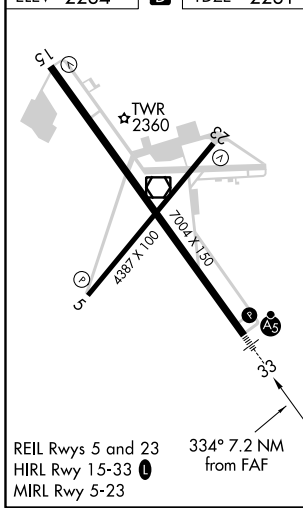
ATIS 118.325	JOHNSTOWN APP CON ★ 121.2 299.2	JOHNSTOWN TOWER ★ 125.75 (CTAF) 0	GND CON 121.6	CLNC DEL 126.85 235.775	UNICOM 122.95
------------------------	---	---	-------------------------	-----------------------------------	-------------------------



NE-4, 10 SEP 2020 to 08 OCT 2020

NE-4, 10 SEP 2020 to 08 OCT 2020

ELEV 2284	D	TDZE 2281
-----------	----------	-----------



CATEGORY	A	B	C	D
S-ILS 33	2481-½ 200 (200-½)			
S-LOC 33	2600-½ 319 (400-½)			
C CIRCLING	2700-1 416 (500-1)	2880-1 596 (600-1)	2880-1½ 596 (600-1½)	3000-2¼ 716 (800-2¼)