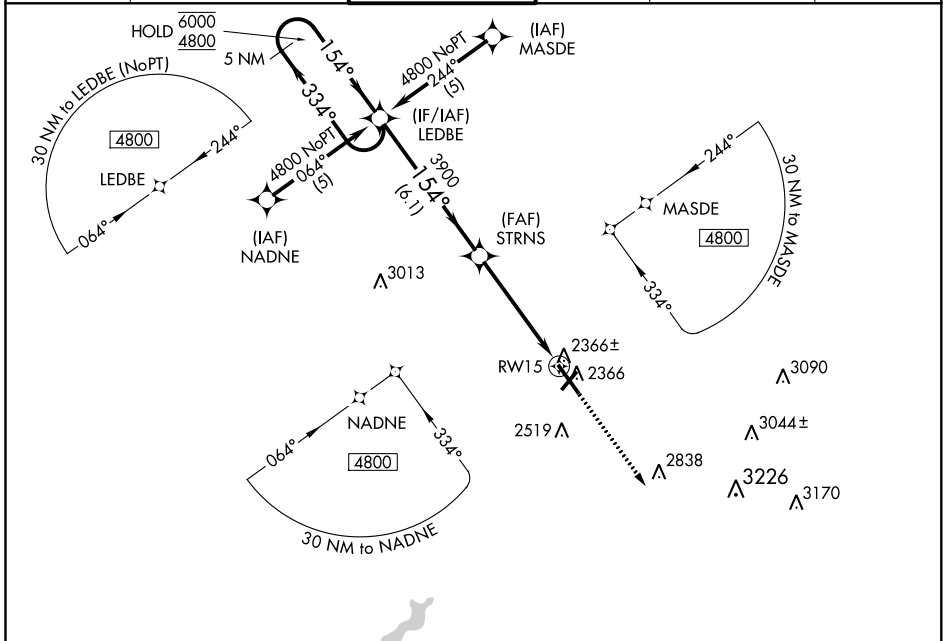


WAAS CH <b>53513</b> <b>W15A</b>	APP CRS <b>154°</b>	Rwy Idg TDZE <b>2276</b> Apt Elev <b>2284</b>	<b>7003</b>
--	------------------------	---	-------------

# RNAV (GPS) RWY 15

JOHN MURTHA JOHNSTOWN-CAMBRIA COUNTY (JST)

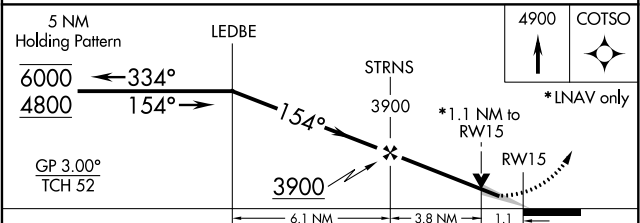
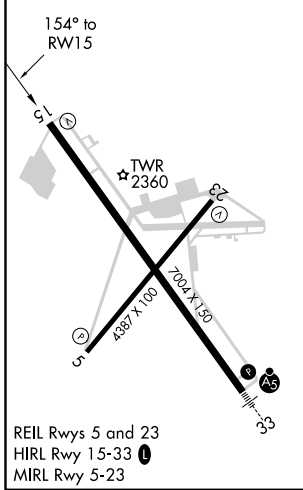
RNP APCH.		For uncompensated Baro-VNAV systems, LNAV/VNAV NA below -19°C or above 54°C.		MISSED APPROACH: Climb to 4900 direct COTSO and hold.	
ATIS <b>118.325</b>	JOHNSTOWN APP CON * <b>121.2 299.2</b>	JOHNSTOWN TOWER * <b>125.75 (CTAF) 0</b>	GND CON <b>121.6</b>	CLNC DEL <b>126.85 235.775</b>	UNICOM <b>122.95</b>



NE-4, 10 SEP 2020 to 08 OCT 2020

NE-4, 10 SEP 2020 to 08 OCT 2020

ELEV 2284	<b>D</b>	TDZE 2276
-----------	----------	-----------



CATEGORY	A	B	C	D
LPV DA		2526-3/4	250 (300-3/4)	
LNAV/VNAV DA		2595-1	319 (400-1)	
LNAV MDA	2680-1	404 (400-1)	2680-1 1/8 404 (400-1 1/8)	2680-1 1/4 404 (400-1 1/4)
<b>C</b> CIRCLING	2700-1 416 (500-1)	2880-1 596 (600-1)	2880-1 1/2 596 (600-1 1/2)	3000-2 1/4 716 (800-2 1/4)