

HI-TACAN X RWY 23

TACAN NBC Chan 42	APCH CRS 221°	Rwy ldg 12,202 TDZE 16 Arprt Elev 37
-----------------------------	-------------------------	---

JAL-916 [USN]

BEAUFORT MCAS (MERRITT FLD) (KNBC)

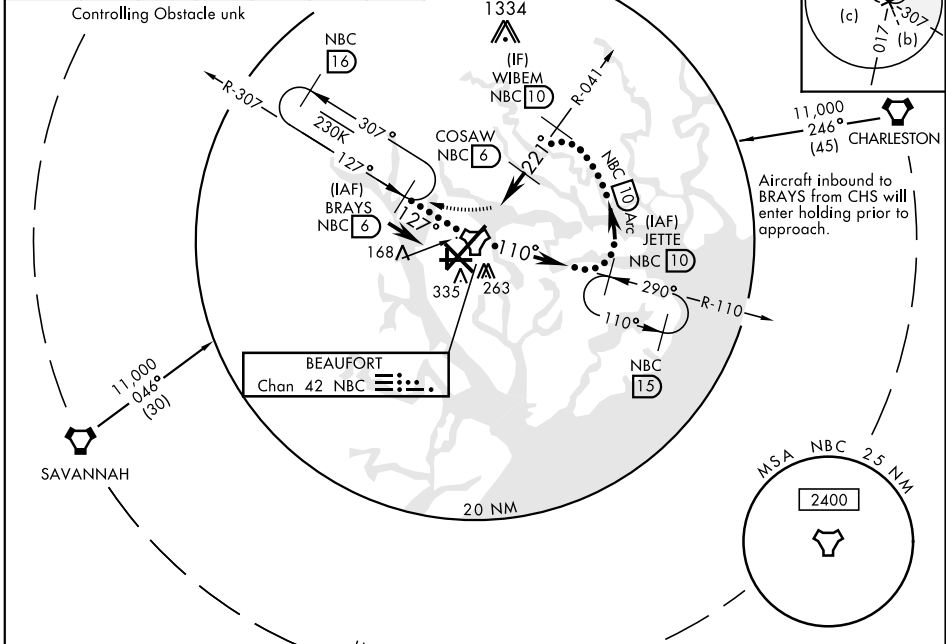
* When ALS inop, increase vis to 1 mile.

ALSF-1

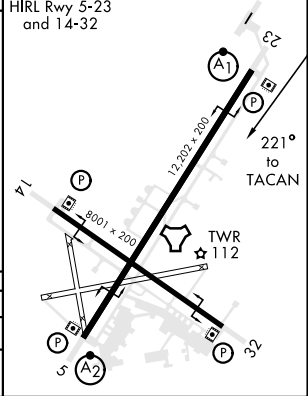
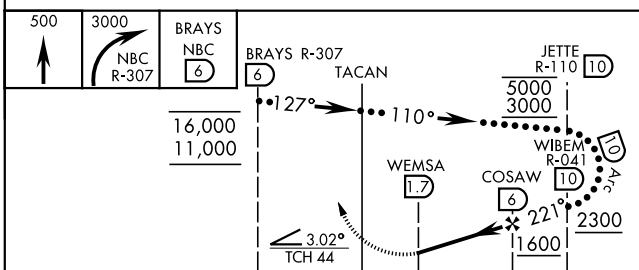
† MISSED APPROACH: Climb to 500 then climbing right turn to 3000, join NBC TACAN R-307 to direct BRAYS and hold.

ATIS ★ 279.525	BEAUFORT APP CON (ABV 3000) 125.125 292.125 (3000 and BLW) 123.7 269.125	BEAUFORT TOWER ★ 119.05 342.875	GND CON 128.15 348.625	CLNC DEL 128.15 254.375	ASR/PAR
--------------------------	--	---	----------------------------------	-----------------------------------	---------

† CAUTION: Missed Approach Minimum Climb Rate to 3000 CAUTION: Intimed seg len 4 NM CAUTION: FAC 88 ft from RCL, 3000 ft from rwy thld						
Knots	60	120	180	240	300	360
V/V(fpm)	545	1090	1635	2180	2725	3270



EMERG SAFE ALT 100 NM 3100	ELEV 37	TDZE 16
----------------------------	---------	---------



CATEGORY	C	D	E
S-23 *	360- $\frac{3}{4}$	344 (400- $\frac{3}{4}$)	
CIRCLING	600-1 $\frac{1}{2}$ 563 (600-1 $\frac{1}{2}$)	600-2 563 (600-2)	740-2 $\frac{1}{2}$ 703 (800-2 $\frac{1}{2}$)

HI-TACAN X RWY 23

SE-2, 10 SEP 2020 to 08 OCT 2020

SE-2, 10 SEP 2020 to 08 OCT 2020