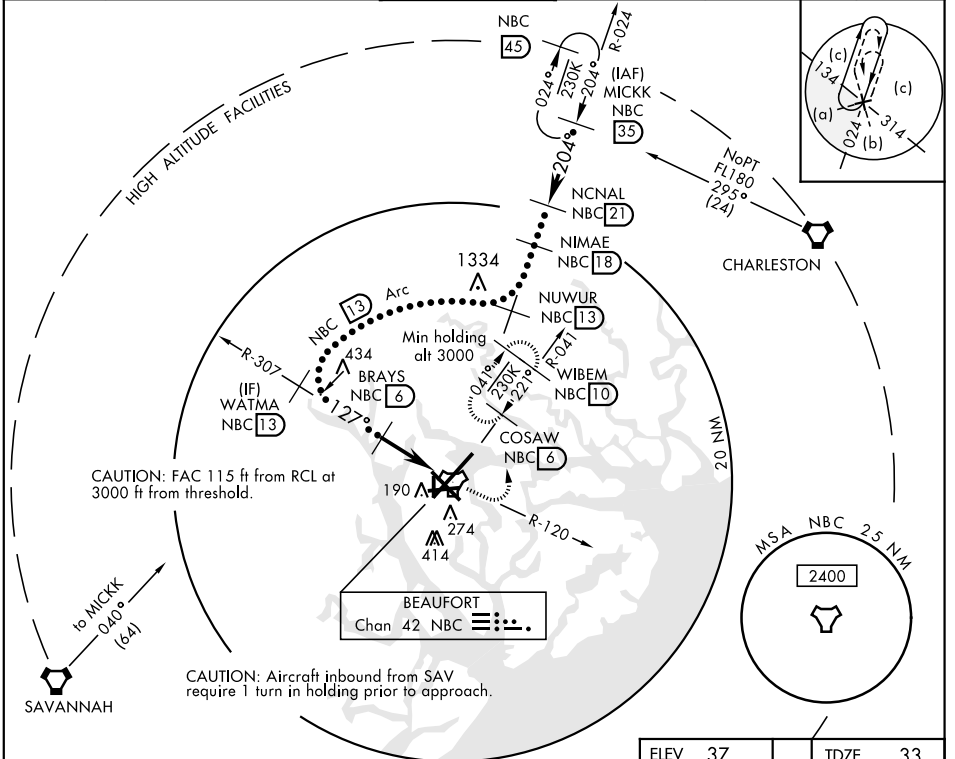


BEAUFORT, SOUTH CAROLINA

HI-TACAN Z RWY 14

TACAN NBC Chan 42	APCH CRS 127°	Rwy ldg TDZE Arprt Elev 8001 33 37	JAL-916 [USN]	BEAUFORT MCAS (MERRITT FLD) (KNBC)
RADAR Required		MISSED APPROACH: Climb to 1600 on NBC TACAN R-120, then climbing left turn to 3000 via hdg 330° to intercept NBC R-041 to 6 DME (COSAW) and hold. Continue climb in hold to 3000.		

ATIS ★ 279.525	BEAUFORT APP CON (ABV 3000) 125.125 292.125 (3000 and BLW) 123.7 269.125	BEAUFORT TOWER ★ 119.05 342.875	GND CON 128.15 348.625	CLNC DEL 128.15 254.375	ASR/PAR
--------------------------	--	---	----------------------------------	-----------------------------------	---------



SE-2, 10 SEP 2020 to 08 OCT 2020

SE-2, 10 SEP 2020 to 08 OCT 2020

EMERG SAFE ALT 100 NM 3100		ELEV 37	TDZE 33
MICK R-024 FL180 204° 11,000 2.94° TCH 41	VDA and VGSI not coincident 1600 NBC R-120 3000 Hdg 330° COSAW NBC 6	HIRL Rwy 5-23 and 14-32	
NCNAL (NBC 21) 10,000	NIMAE (NBC 18) 7,000	127° to TACAN	
NUWUR (NBC 13) 3,000	WATMA (NBC 13) 1,700	127.092 x 200	
BRAYS (NBC 6) 1700	TACAN	8001 x 200	
WUSAL (1.5) 4.5 NM		TWR 112	
CATEGORY	C	D	E
S-14	420-1½ 387 (400-1½)		
CIRCLING	600-1½ 563 (600-1½)	600-2 563 (600-2)	740-2½ 703 (800-2½)

BEAUFORT, SOUTH CAROLINA 32° 29' N-80° 43' W BEAUFORT MCAS (MERRITT FLD) (KNBC)
 Amdt 2 01FEB18

HI-TACAN Z RWY 14