

HI-TACAN Z RWY 23

TACAN NBC Chan 42	APCH CRS 221°	Rwy ldg 12,202 TDZE Arprt Elev 16 37
-----------------------------	-------------------------	--

JAL-916 [USN]

BEAUFORT MCAS (MERRITT FLD) (KNBC)

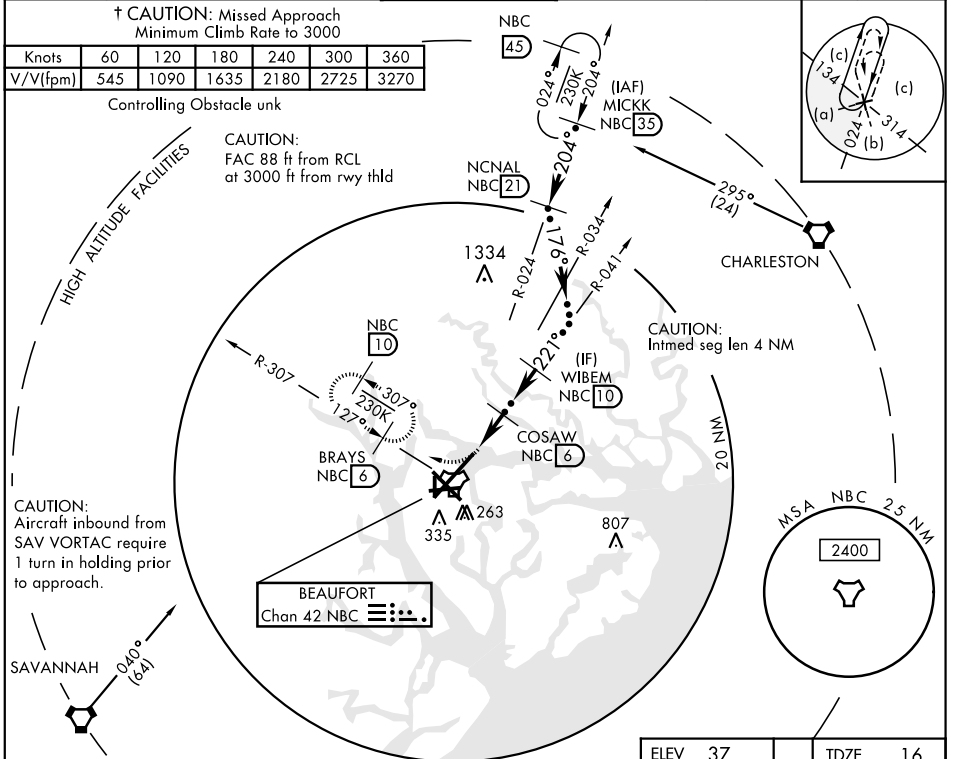
† *When ALS inop, increase vis to 1 mile.		ALSF-1 	† MISSED APPROACH: Climb to 500, then climbing right turn to 3000, intercept NBC TACAN R-307 direct BRAYS and hold.		
ATIS ★ 279.525	BEAUFORT APP CON (ABV 3000) 125.125 292.125 (3000 and BLW) 123.7 269.125	BEAUFORT TOWER ★ 119.05 342.875	GND CON 128.15 348.625	CLNC DEL 128.15 254.375	ASR/PAR

† CAUTION: Missed Approach
Minimum Climb Rate to 3000

Knots	60	120	180	240	300	360
V/V(fpm)	545	1090	1635	2180	2725	3270

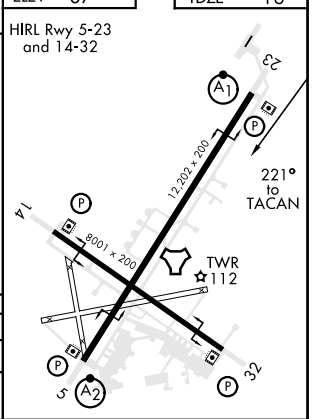
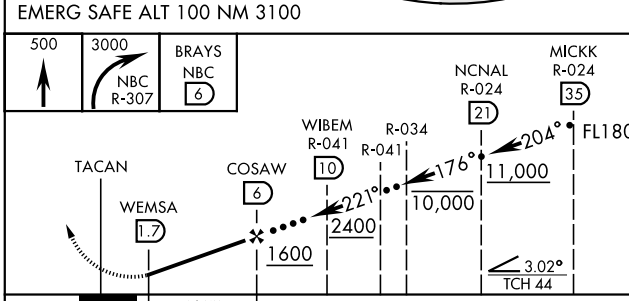
Controlling Obstacle unk

CAUTION:
FAC 88 ft from RCL
at 3000 ft from rwy thld



CAUTION:
Aircraft inbound from
SAV VORTAC require
1 turn in holding prior
to approach.

ELEV 37	TDZE 16
---------	---------



CATEGORY	C	D	E
S-23 *	360- $\frac{3}{4}$	344 (400- $\frac{3}{4}$)	
CIRCLING	600-1 $\frac{1}{2}$ 563 (600-1 $\frac{1}{2}$)	600-2 563 (600-2)	740-2 $\frac{1}{2}$ 703 (800-2 $\frac{1}{2}$)

HI-TACAN Z RWY 23

SE-2, 10 SEP 2020 to 08 OCT 2020

SE-2, 10 SEP 2020 to 08 OCT 2020